

Flat 4 75 Withington Road, Whalley Range, Manchester, M16 7EX

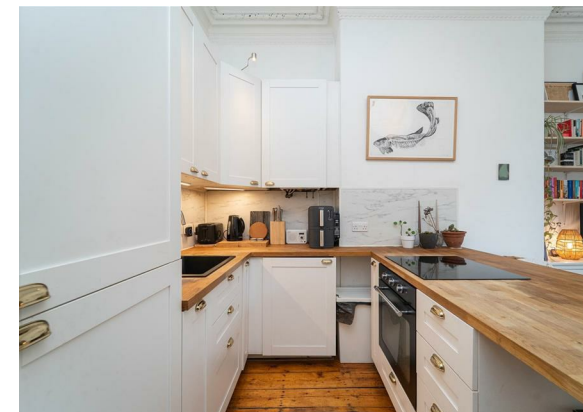


JP&Brimelow
ESTATE AGENTS

Offers In The Region Of £180,000

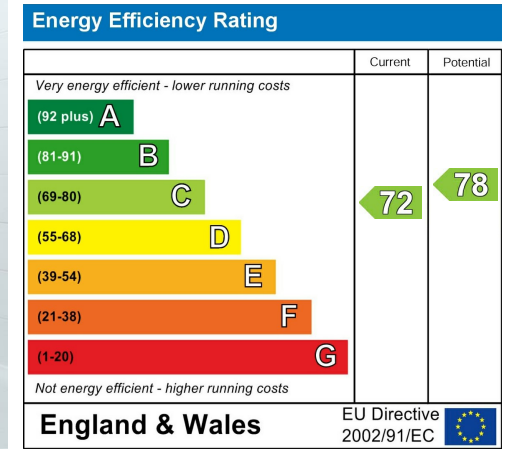


VIDEO TOUR AVAILABLE A delightful TWO DOUBLE BEDROOM, first floor apartment located within this attractive period conversion on Withington Road. Within walking distance to fantastic transport links, giving you direct access into the city centre, with links to motorways and trams nearby, Alexandra Park, St Bede's College & William Hulme Grammar School are all on your door step. In brief the property consists of a communal entrance hall with stairs leading to all floors, a private entrance hall, two double bedrooms, a white three-piece bathroom suite, and an open plan living space complete with fully fitted kitchen. Other benefits include gas fired central heating, high ceilings, stripped and varnished floor boards, and off road parking.



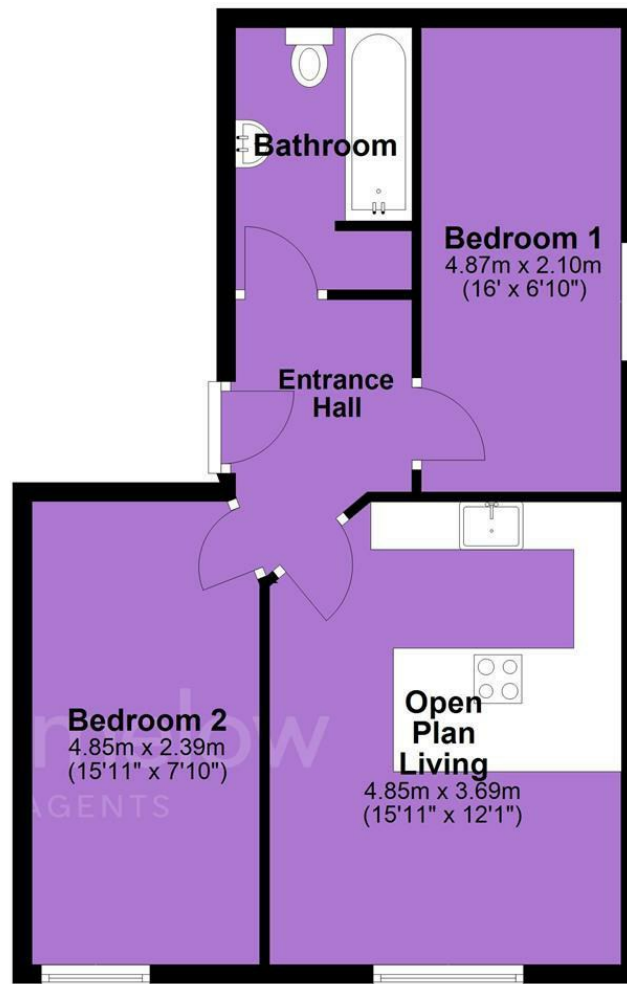


EPC Chart



Tenure: **Leasehold** Council Tax Band: **A**

First Floor



JP & Brimelow Estate Agents Ltd
430 Barlow Moor Road, Manchester, M21 8AD
Tel: 0161 8822233
E: sales@jpbrimelow.co.uk www.jpandbrimelow.co.uk



JP & Brimelow
ESTATE AGENTS

NOTICE: JP & Brimelow Estate Agents Ltd for themselves and for the vendors or lessors of this property whose agents they are give notice that:

- (i) the particulars are set out as a general outline only for the guidance of intending purchasers or lessees, and do not constitute, nor constitute part of, an offer or contract;
- (ii) all descriptions, dimensions, references to the condition and necessary permissions for use and occupation, and other details are given in good faith and are believed to be correct but any intending purchasers or tenants should not rely on them as statements or representations of fact but must satisfy themselves by inspection or otherwise as to the correctness of each of them;
- (iii) no person in the employment of JP & Brimelow Estate Agents Ltd has any authority to make or give any representation or warranty whatever in relation to this property.

 [jpandbrimelowstateagents](https://www.instagram.com/jpandbrimelowstateagents)

 [@jpandbrimelow](https://twitter.com/jpandbrimelow)