



Gordon Place, W8

£850,000



- One Bedroom
- One Bathroom
- Recently Refurbished
- Roof Terrace
- Great Kensington Location
- Leasehold





ABOUT THE PROPERTY

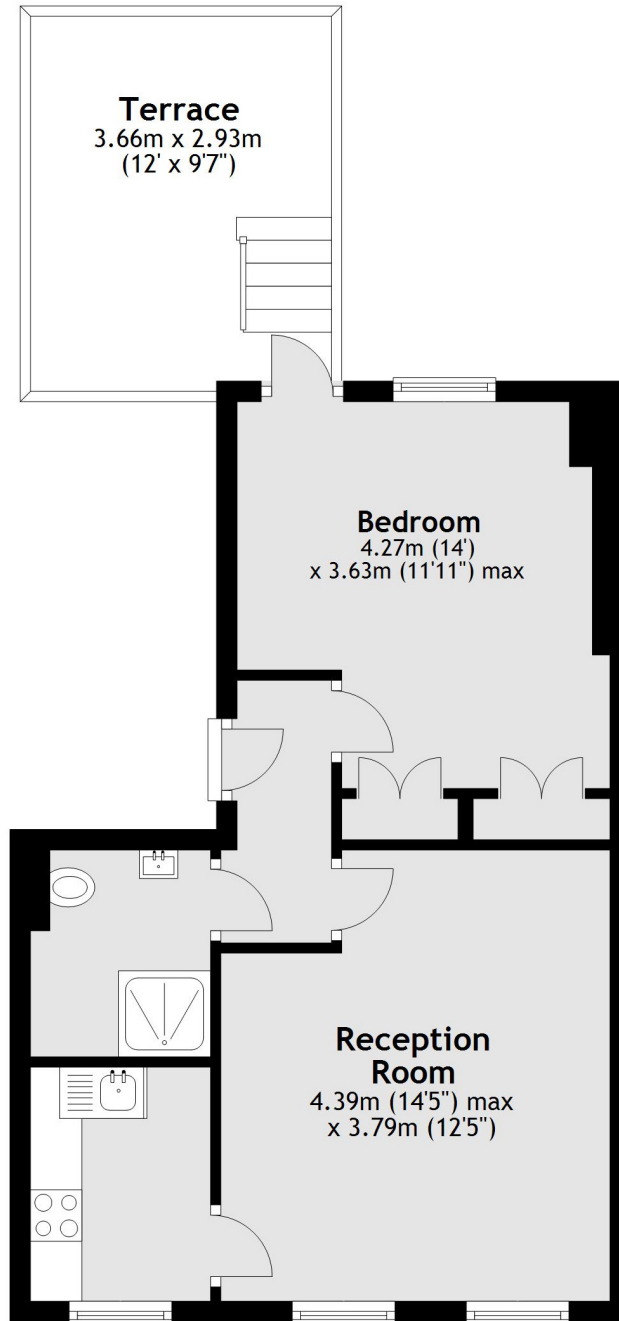
A well presented one-bedroom, one-bathroom apartment featuring a private roof terrace and is set on one of Kensington's most desirable streets. On the second floor, the home is flooded with natural light and has been arranged to enhance both space and brightness.

The generously sized kitchen and reception area enjoy westerly rooftop views. The double bedroom benefits from excellent built-in storage and opens directly onto a delightful private terrace, perfect for unwinding or hosting guests.



Gordon Place benefits from excellent transport and shopping facilities of Kensington High Street and Notting Hill Gate and is also close to the open space of Holland Park and Kensington Gardens.





Total area: approx. 40.7 sq. metres (437.8 sq. feet)

Marsh & Parsons Kensington

9 Kensington Church Street,
London, W8 4LF
020 7368 4450