



Guide Price
£600,000

Freehold

4x  2x  1x 

**The Willow, Faversham
Lakes, Ham Road,
Faversham, Kent, ME13
7TW**

Wards
Helping you move forwards



Main features

- Contemporary well designed 4 bedroom new build family home
- Stunning fitted kitchen with fully integrated Bosch appliances
- Single garage & off road parking
- Patio and laid to lawn rear garden
- Delightful setting amongst a country park and lakes providing fabulous walks

Accommodation

GROUND FLOOR

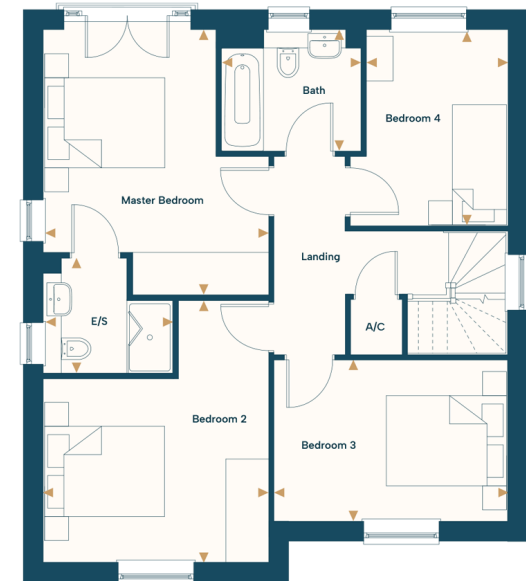
- Entrance Hall
- Living Room: 16'7 x 12'3 (5.06m x 3.74m)
- Kitchen/Dining Area: 18'10 x 11'10 (5.74m x 3.61m)
- Study: 8'9 x 7'5 (2.67m x 2.26m)
- Utility/Boot Room
- Cloakroom

FIRST FLOOR

- Landing
- Bedroom 1: 14'5 x 12'3 (4.40m x 3.74m)
- En-Suite Shower Room
- Bedroom 2: 14'2 x 12'3 (4.32m x 3.74m)
- Bedroom 3: 12'8 x 8'9 (3.86m x 2.67m)
- Bedroom 4: 10'8 x 7'8 (3.25m x 2.34m)
- Bathroom

OUTSIDE

- Front Garden
- Rear Garden
- Garage
- Off-Road Parking



Call Faversham - 01795 535517 ■ wardsofkent.co.uk

- If buying to let, the energy rating will need to be improved to at least 'E' rating before you can let the property
- Legal advice should be taken to verify fixtures/fittings, planning, alterations and/or lease details
- Appliances & services are untested, dimensions are approximate and floor plans are not to scale



10832533/20251121/JB/PJ