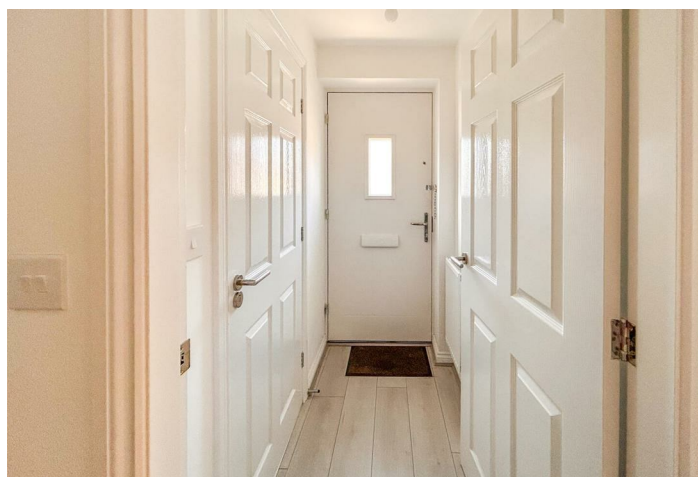




Lydford Close , Southport, PR9 8SU

- 2 cosy bedrooms
- Spacious reception room
- Newly built in 2024
- Located in Southport
- Quiet Lydford Close
- Modern bathroom
- Terraced house
- 678 sq ft of space
- Close to local amenities
- Ideal for first-time buyers



Local Authority
Council Tax Band **B**
EPC Rating **B**



Smartsale4u Office

Suite 331 Kemp House, 152-160 City
Road, London, EC1V 2NX

Contact

0204 572 9091
info@smartsale4u.co.uk
smartsale4u.co.uk

Agents Note: Whilst every care has been taken to prepare these particulars, they are for guidance purposes only. All measurements are approximate and for general guidance purposes only and whilst every care has been taken to ensure accuracy, they should not be relied upon and potential buyers/tenants are advised to recheck the measurements.