



## Ommaney Road, SE14

£2,000 Per calendar month

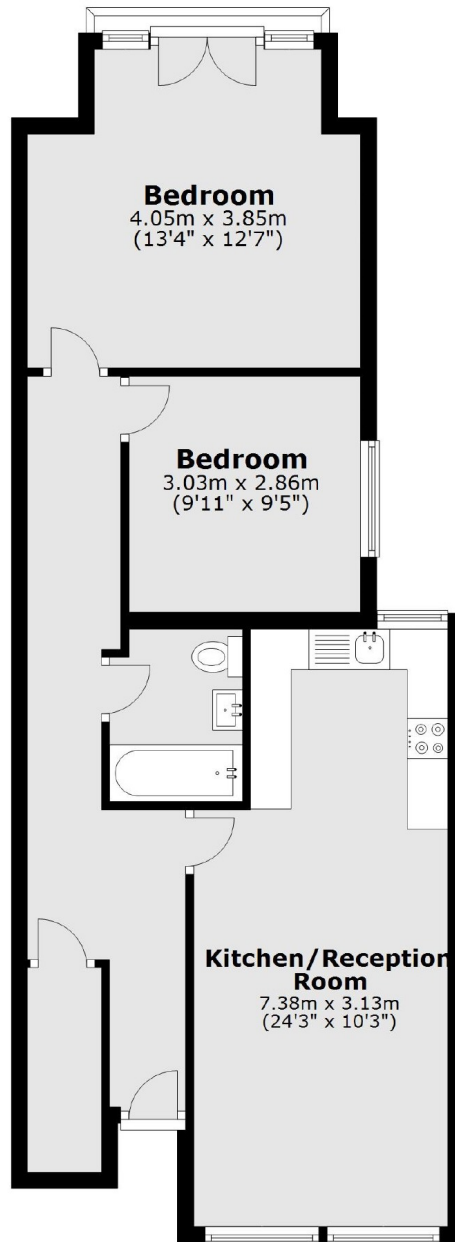
A two double bedroom, hall floor conversion flat situated in the sought after Telegraph Hill Conservation area with modern features and ample storage throughout.

Musgrove Road is located in the sought after Telegraph Hill Conservation area, close to Telegraph Hill Park, ideally located with excellent transport links including Brockley, Nunhead & New Cross stations, popular gastro pubs and cafés.

### Features

- Two Bedrooms
- Hall Floor
- Conversion
- Telegraph Hill Conservation Area
- Close To Station
- Unfurnished

# Ommaney Road, London, SE14



Total area: approx. 64.7 sq. metres (697.0 sq. feet)