



Kingswood Road, Ilford – IG3 8UB

£600,000 Freehold

4 Bedroom Mid Terrace Victorian Style House • Upstairs Bathroom & Downstairs Shower Room • Good size Rooms with High Ceilings • Close to Goodmayes & Seven Kings Station (Elizabeth Line) • Off Seven Kings High Rd • Large Driveway to Front • Will Suit Families



**HIGHCASTLE
ESTATES**

020 3026 4420
sales@hceuk.com

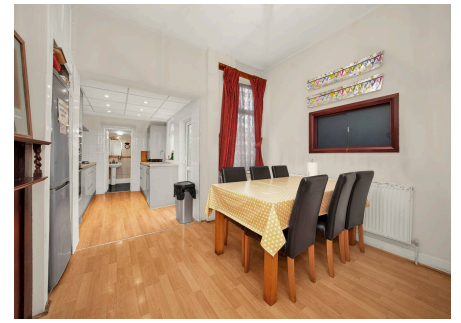
Spacious four bedroom Victorian mid-terrace with period features, modern kitchen, two washrooms, off-street parking, near schools and stations (Elizabeth Line). Ideal for families.

Council Tax band: D

Tenure: Freehold

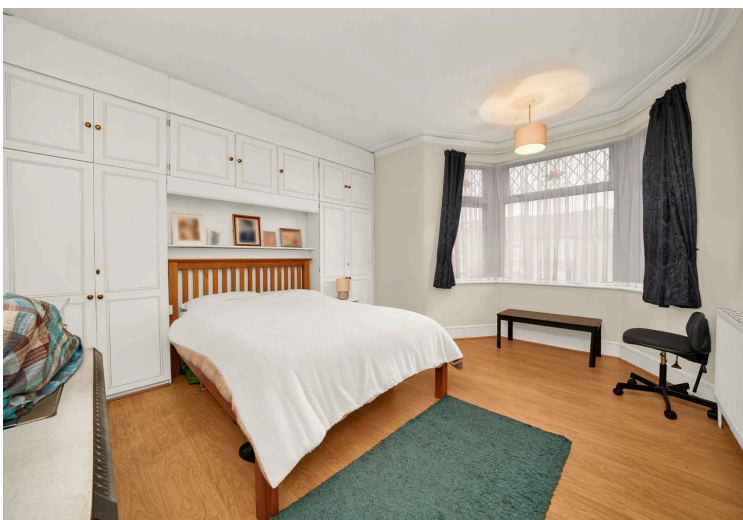
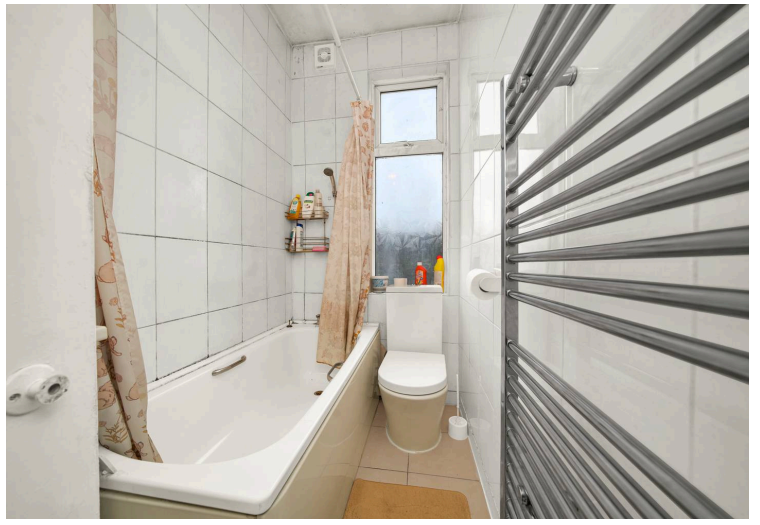
EPC Energy Efficiency Rating: C

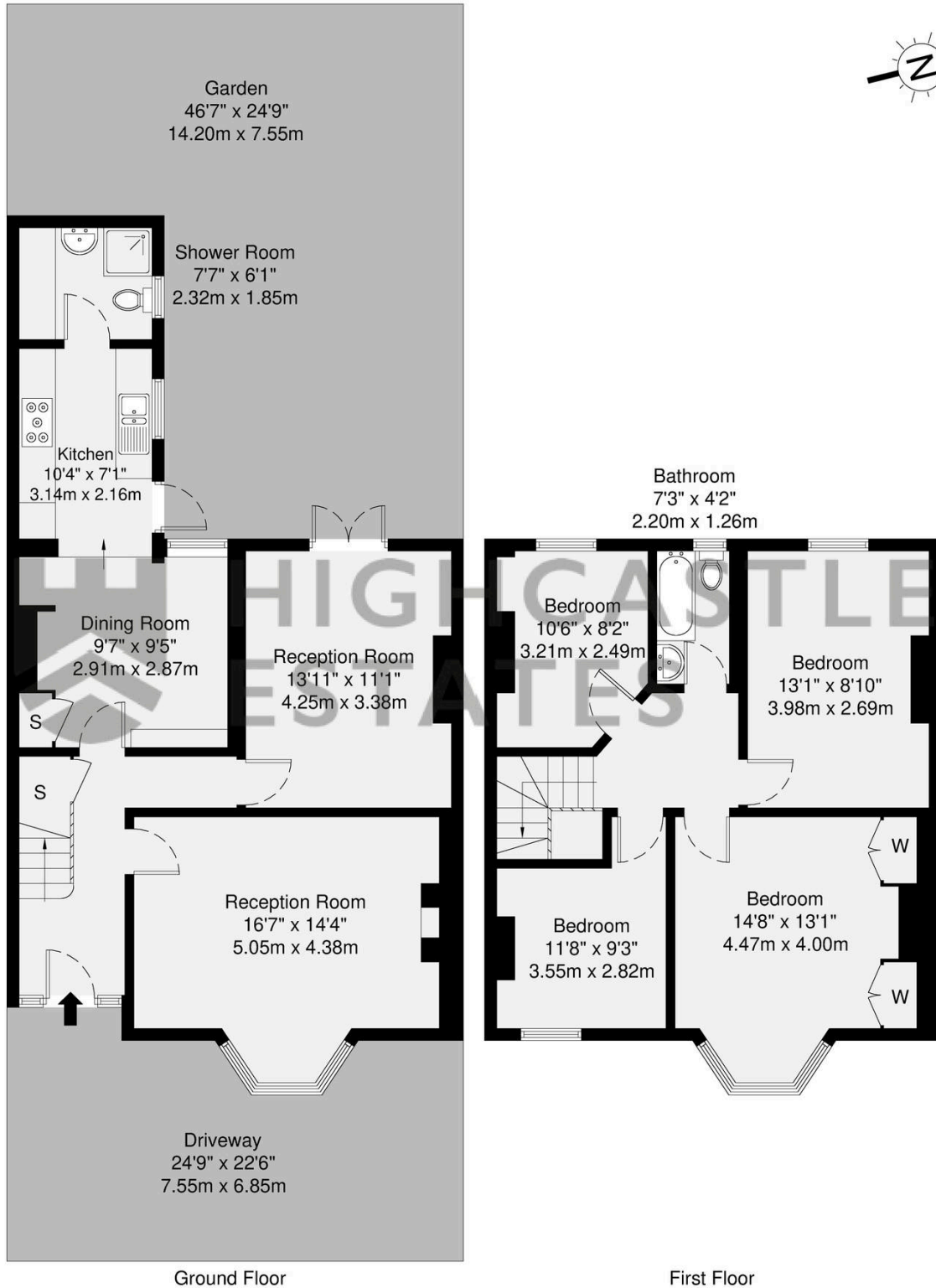
EPC Environmental Impact Rating:



- 4 Bedroom Mid Terrace Victorian Style House
- Upstairs Bathroom & Downstairs Shower Room
- Good size Rooms with High Ceilings
- Close to Goodmayes & Seven Kings Station (Elizabeth Line)
- Off Seven Kings High Rd
- Large Driveway to Front
- Will Suit Families







GROSS INTERNAL AREA (GIA)
The footprint of the property
124.8 sq m / 1343 sq ft

TOTAL STORAGE SPACE
Storage and wardrobe total area
2.7 sq m / 28 sq ft

EXTERNAL FEATURES
Garden, Balcony, Terrace, Verandah etc.
157.2 sq m / 1692 sq ft

RESTRICTED HEAD HEIGHT
Limited use area under 1.5m
0.0 sq m / 0.0 sq ft

Disclaimer : Floorplan measurements are approximate and are for illustrative purposes only. While we do not doubt the floorplan accuracy and completeness, you or your advisors should conduct a careful, independent investigation of the property in respect of monetary valuation.

**Maison
VUE**

You can include any text here. The text can be modified upon generating your brochure.