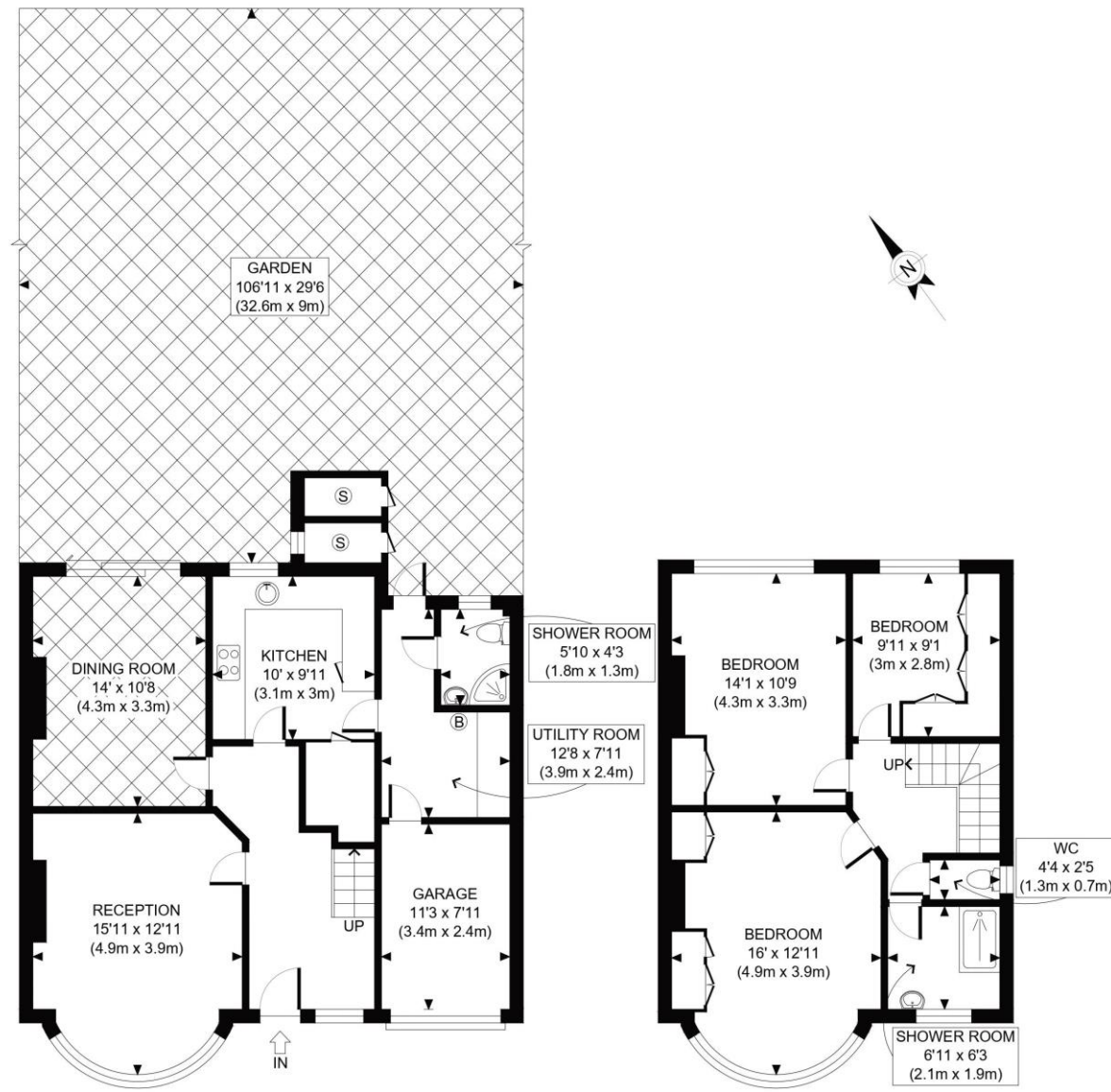


The Floorplan...



This plan is for illustrative purposes only and should be used as such by any prospective client. Whilst every attempt has been made to ensure the accuracy of the Floor Plan contained here, measurements of the doors, windows, rooms and any other items are approximate and no responsibility is taken for any errors, omissions, or misstatement. The services, systems and appliances shown have not been tested and no guarantee as to the operability or efficiency can be given.

PROPERTY PHOTO PLANS
 THE STEP STEP FOR PROPERTY MARKETING

More Details From...

Call: Brian Cox North Harrow: 020 3866 6640
Email: nhadmin@brian-cox.co.uk
Web: www.brian-cox.co.uk



Consumer Protection from Unfair Trading Regulations 2008 We have not tested any apparatus, equipment, fixtures, fittings or services and so cannot verify that they are in working order or fit for purpose. You are advised to obtain verification from your solicitor or surveyor. References to the tenure of a property are based on information supplied by the seller. We have not had sight of the title documents and a buyer is advised to obtain verification from their solicitor. Items shown in photographs are not included unless specifically mentioned within the sales particulars, but may be available by separate negotiation. We advise you to book an appointment to view before embarking on any journey to see a property, and check its availability.



0203 866 6640
brian-cox.co.uk



This exceptional three bedroom semi detached property enters the market with Brian Cox Estate Agents. The property is situated close to shopping facilities, Metropolitan line train station, sought after schools including Pinner Park and Nower Hill. Accommodation: Entrance hall, attractive lounge, dining room, attractive kitchen, three good sized bedrooms and spacious family bathroom. Further benefits include gas central heating, double glazing, garage, own drive and delightful 106 ft rear garden. There is also potential to extend the property subject to planning permission as it has a generous plot size.



£725,000
 Freehold

Manor Way, North Harrow HA2 6BZ



In Brief...

- Exceptional Extended Three bed Semi
- Nower Hill/Pinner Park Catchment
- Fantastic Decorative Condition
- Potential to extend (STPP)
- Sought After Road
- Delightful 106ft Garden



The Location...

Nearest Stations ...

- North Harrow (0.3 miles)
- Headstone (0.8 miles)
- West Harrow (0.8 miles)



North Harrow is a suburban area of North West London, situated north-west of central Harrow within the London Borough of Harrow. North Harrow train station is a London Underground station situated in North Harrow in North West London. The station is on the Metropolitan line between Harrow-on-the-Hill (southbound) and Pinner (northbound). The area is served well by local amenities including a post office, Tesco Express, a selection of restaurants, take-aways & cafés and independent specialist shops. There are many local schools in the area some of these include Pinner Park Primary School, Vaughan Primary School, Longfield Primary School, Nower Hill High School and Shaftesbury High School.

