



20 Chloe Place

PE2 8XR

Offers in the region of £260,000

4 2 1

20 Chloe Place

PE2 8XR

Nicely presented semi detached townhouse on Chloe Place, a popular part of Cardea. This property comprises of;

Ground Floor- entrance lobby, lounge with understairs cupboard, inner hallway with w/c, kitchen with double doors to the garden.

First Floor- landing, three bedrooms (previously two) family bathroom.

Second Floor- landing with storage cupboard, bedroom one and en suite shower room.

Outside- low maintenance frontage with driveway to the side, access to the garden. To the rear- an enclosed garden mainly laid to patio and artificial turf with raise flower beds. Garden room.

This property is within easy reach of the local amenities the area offers and major transport links.

Tenure: Freehold
Council Tax Band: C



Ground Floor

Lounge

14'7" max x 12'9" max (4.47m max x 3.89m max)

W/C

Kitchen

12'8" max x 8'9" max (3.87m max x 2.68m max)

Inner Hallway

First Floor

Landing

Bedroom Two

12'9" x 7'9" (3.89m x 2.38m)

Bedroom Three

10'11" x 5'6" (3.34m x 1.68m)

Bedroom Four

8'5" x 6'9" (2.58m x 2.08m)

Family Bathroom

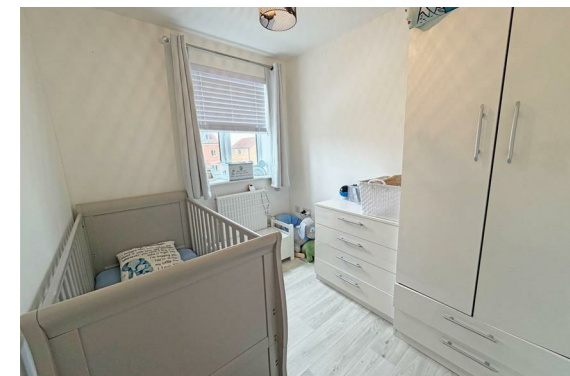
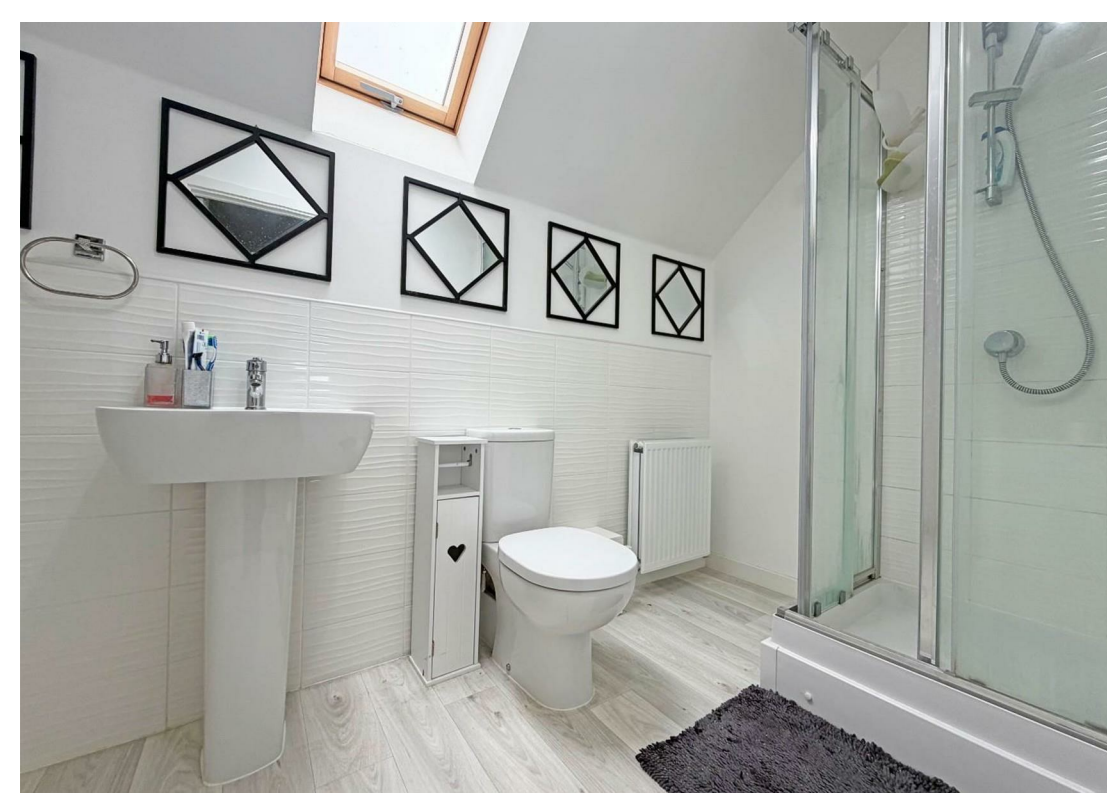
Second Floor

Landing

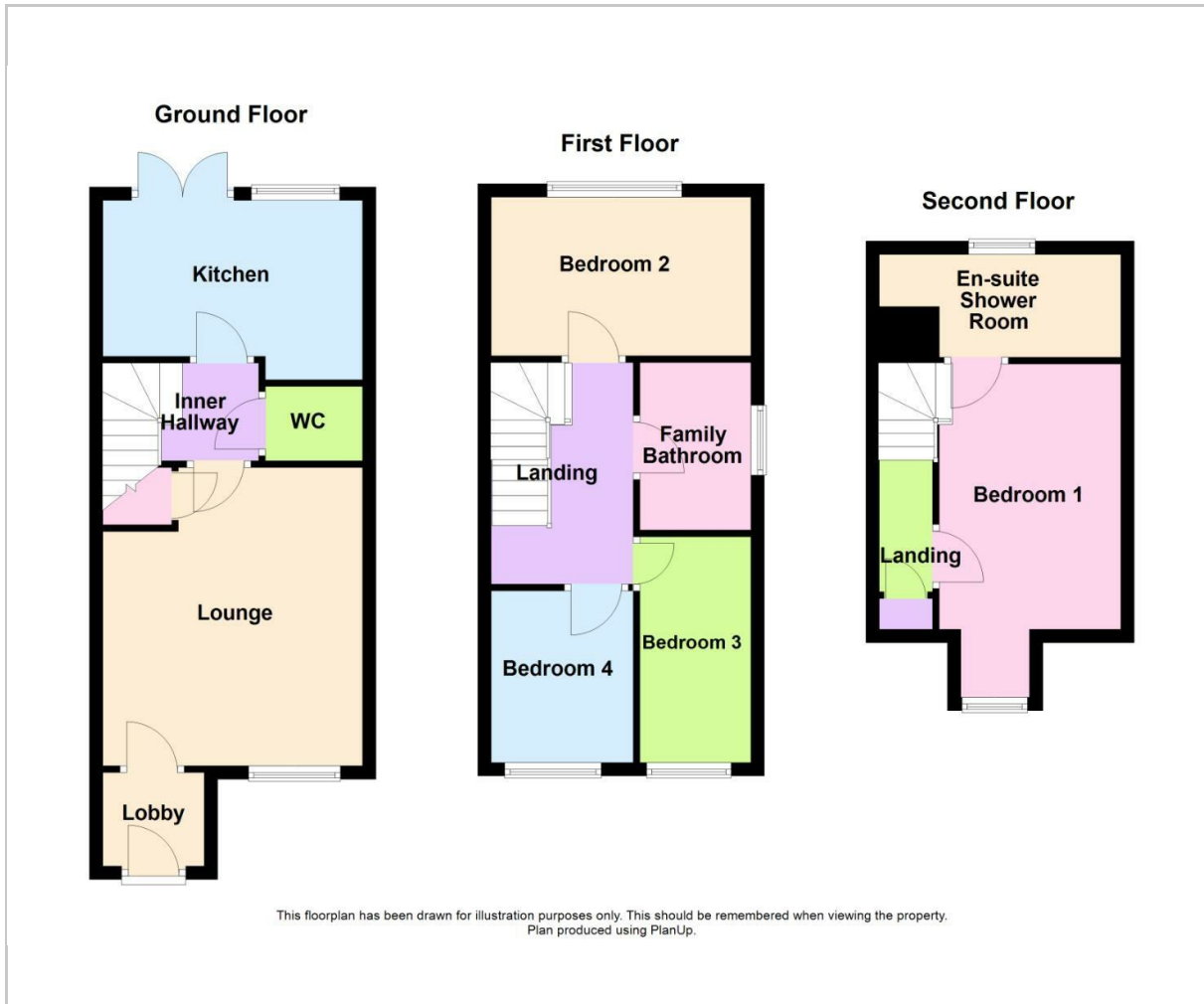
Bedroom One

13'0" x 9'1" (3.98m x 2.79m)

En Suite Shower Room



Floor Plan



Area Map



Energy Efficiency Graph



Viewing

Please contact our Orton Office on 01733 852257 if you wish to arrange a viewing appointment for this property or require further information.

These particulars, whilst believed to be accurate are set out as a general outline only for guidance and do not constitute any part of an offer or contract. Intending purchasers should not rely on them as statements of representation of fact, but must satisfy themselves by inspection or otherwise as to their accuracy. No person in this firm's employment has the authority to make or give any representation or warranty in respect of the property.



48b Church Drive, Orton Waterville
Peterborough, PE2 5HE
T: 01733 852257
E: orton@firminandco.co.uk