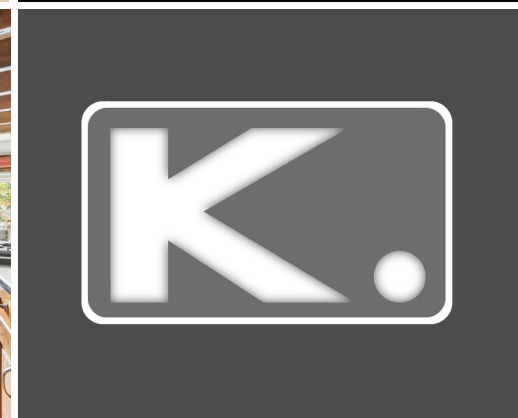


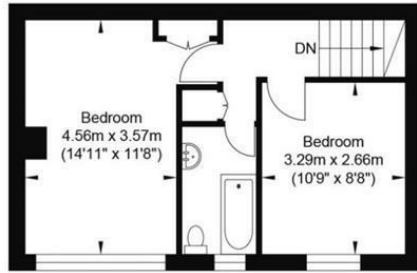


**3 Bed
House - Terraced
located in**

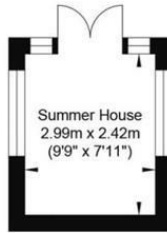
Offers Over £475,000



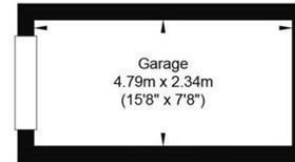
Henfield Common North



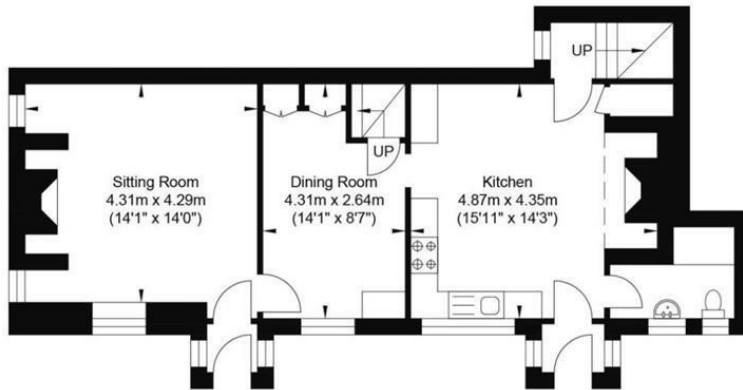
First Floor
Approximate Floor Area
330.12 sq ft
(30.67 sq m)



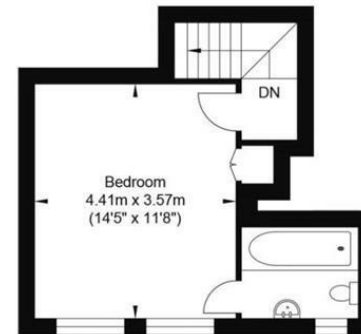
Outbuilding
Approximate Floor Area
77.93 sq ft
(7.24 sq m)



Garage
Approximate Floor Area
120.66 sq ft
(11.21 sq m)




Ground Floor
Approximate Floor Area
639.59 sq ft
(59.42 sq m)



First Floor
Approximate Floor Area
263.93 sq ft
(24.52 sq m)



Approximate Gross Internal Area(Excluding Garage / Outbuilding) = 114.61 sq m / 1233.64 sq ft
Illustration for identification purposes only, measurements are approximate, not to scale.

Energy Efficiency Rating		
	Current	Potential
Very energy efficient - lower running costs		
(92 plus) A		
(81-91) B		
(69-80) C		
(55-68) D		
(39-54) E		
(21-38) F		
(1-20) G		
Not energy efficient - higher running costs		
EU Directive 2002/91/EC 		
England & Wales		

DIRECTIONS

CONTACT

Kendrick Property Services - Brighton
10-12 Lewes Road
Brighton
East Sussex
BN2 3HP

E:
sales@kendrickpropertyservices.co.uk
T: 01273 600162
www.kendrickpropertyservices.co.uk

