

Head Office:
Dixon Kelley Estate Agents
1 Penn Court
Station Road, West Moors
Dorset. BH22 0JJ

DORSET PARK HOMES

DRAFT

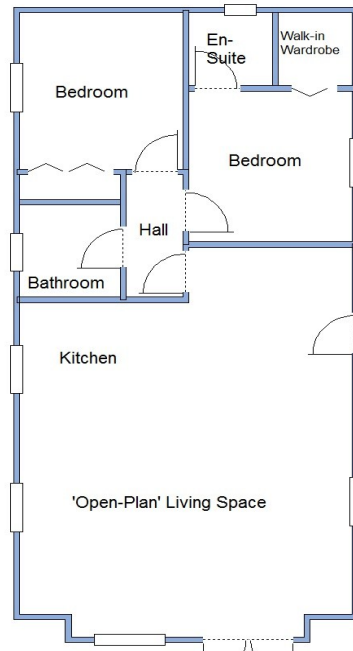
www.dorsetparkhomes.com

Telephone: 01202 877511

47 Tall Trees Park, Matchams Lane, Christchurch, Dorset. BH23 6TT



Spacious Park Home with Communal Swimming Pool

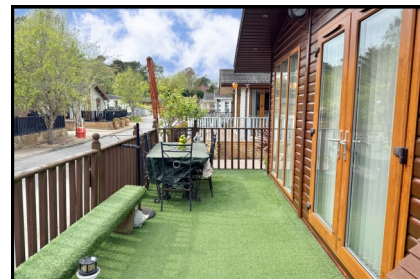
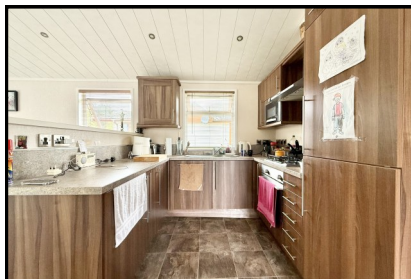


This drawing has been prepared for diagrammatic purpose only. Not to scale

2 Bedroom Park Home approx 39' x 20'

- Accommodation & approximate room dimensions:
- Stately Lowther 2011
- 'Open Plan Living Space' approx 23'9" x 18'10". Range of floor and wall cupboards. Integrated fridge/freezer, washer/dryer & dishwasher. Built-in oven and gas hob with cooker hood over (untested). High level microwave. Inset spot lights & Vaulted ceiling. Feature fireplace in lounge area. Double doors to raised deck having artificial grass.
- Bedroom 1: approx 9'6" x 9'4" Plus walk-in wardrobe.
- En-Suite: Corner Shower cubicle. Vanity wash basin and W/C.
- Bedroom 2: approx 9'8" x 9'1" Plus recessed wardrobe.
- Bathroom: Panelled bath, vanity wash basin & WC.
- Gas Central Heating (LPG Gas) & Double-Glazing
- Double length block driveway
- Pets Considered
- Age Restriction 45+
- 1983 Mobile Homes Act Residential Licence
- Communal Heated Outdoor Swimming Pool & Fishing Lake. Electric security gates.

Popular Gated Site



Pitch Fee: approx £472.83 per month including water & sewerage
Subject to Annual Review
Council Tax Band: 'A' Tenure: 1983 Mobile Homes Act Agreement

Price £140,000

VIEWING STRICTLY BY APPOINTMENT WITH THE VENDOR'S AGENT Dorset Park Homes 01202 877511

IMPORTANT NOTE: These particulars are believed to be correct but their accuracy is not guaranteed. They do not form part of any contract. Nothing in these particulars shall be deemed to be a statement that the property is in good structural condition or otherwise, nor that any of the services, appliances, equipment or facilities are in good working order or have been tested. Purchasers should satisfy themselves on such matters prior to purchase Ref.W05232

The recommended specialist in Park Home sales
Proprietor: Simon Dixon

