



Beech House 19 Lascelles Road

Buxton, SK17 6RA

Offers Around £495,000



Beech House 19 Lascelles Road

Buxton, SK17 6RA

Tenure Freehold Council Tax Band G



A well presented three reception, four bedroom, three bathroom detached family home in this popular residential area in need of re-furbishment. Beech House, as the property is known, is situated within easy reach of the town centre, the railway station and local amenities. The property benefits from combination gas fired central heating and sealed unit double glazing throughout and has a garage and off road parking and gardens to the front and rear. This superb family home should be viewed to be fully appreciated and is offered for sale with no onward chain.

DIRECTIONS

From our Buxton office turn right and then right again at the roundabout. Turn left into Palace Road and turn left into Lascelles Road. Beech House can be seen after a short while on the left hand side where our For Sale board has been erected.

GROUND FLOOR

Entrance Hall

15'6" x 6'8" (4.72m x 2.03m)

With stairs to first floor, under stairs storage cupboard, further storage cupboard and double radiator.

Cloakroom

6'9" x 4'1" (2.06m x 1.24m)

Part tiled and fitted with a low level W.C., vanity wash hand basin, single radiator and extractor fan.

Kitchen

13'1" x 10'0" (3.99m x 3.05m)

Fitted with a good quality range of base and eye level units with granite working surfaces incorporating a one and a half bowl single drainer sink unit. With integrated stainless steel oven, with integrated larder freezer and space for a larder fridge. Wooden flooring

throughout and sealed unit double glazed window and door to the rear.

Laundry Room

9'11" x 7'6" (3.02m x 2.29m)

Fitted with a range of base units and wall mounted Worcester combination central heating and hot water boiler. With door to garage/storage and door to Utility Room.

Garage/Storage

9'11" x 9'3" (3.02m x 2.82m)

With light and power and up and over door.

Utility Room

6'5" x 4'11" (1.96m x 1.50m)

Fitted with a range of base and eye level units and work surfaces incorporating a stainless steel single drainer sink unit. With space and plumbing for a washing machine and door to outside.

Lounge

15'4" x 14'7" (4.67m x 4.45m)

With a feature stone fireplace surround and mantel over incorporating a coal effect living flame gas fire. With three double radiators, T.V., aerial point and sealed unit double glazed bay window to front. With two frosted sealed unit double glazed windows to side and three double radiators. With double glazed doors leading through to the Dining Room.

Dining Room

14'9" x 11'4" (4.50m x 3.45m)

With double radiator, door to kitchen and sealed unit double glazed windows and door to the rear.

Snug

9'9" x 9'7" (2.97m x 2.92m)

With wood effect laminate flooring, double radiator and sealed unit double glazed window to front.

FIRST FLOOR

Tel: 01298 24383

Landing

12'3" x 3'10" (3.73m x 1.17m)

Airing cupboard with shelving and glazed loft access.

Bedroom One

15'11" x 9'9" (4.85m x 2.97m)

With two built in double wardrobes, two wall light points, single radiator and sealed unit double glazed window to rear.

En-Suite Shower Room

Fully tiled throughout and fitted with a glazed and tiled shower unit and shower, pedestal wash basin and low level W.C. Double radiator, extractor fan and frosted sealed unit double glazed window.

Bedroom Two

13'1" x 12'5" (3.99m x 3.78m)

With two built in double wardrobes, built in cabinet and chest of drawers. Double radiator, two wall light points and two sealed unit double glazed windows to front.

En-Suite Shower Room

6'2" x 5'5" (1.88m x 1.65m)

Fully tiled and fitted with a tiled and glazed shower unit and shower, pedestal wash basin and low level W.C. Extractor fan, double radiator and frosted sealed unit double glazed window.

Bedroom Three

13'3" x 9'7" (4.04m x 2.92m)

With single radiator and sealed unit double glazed window.

Bedroom Four

11'11" x 9'3" (3.63m x 2.82m)

Single radiator and sealed unit double glazed window.

Bathroom

9'1" x 7'10" (2.77m x 2.39m)

Fully tiled and fitted with a suite comprising bath with Victoriana shower fitting, low level W.C., and vanity wash basin. With a tiled and glazed shower cubicle and shower, extractor fan and frosted sealed unit double glazed window.

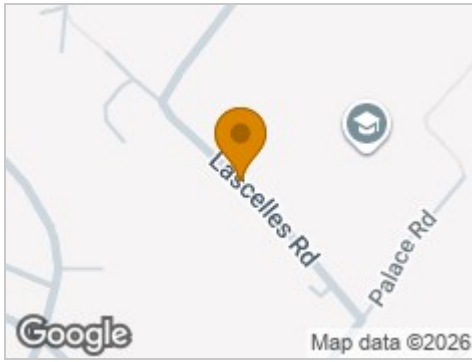
OUTSIDE

Garden and Driveway

To the front of the property there are mature flowers, shrubs and flower beds etc., with a block paved driveway suitable for the off road parking of a number of vehicles. The rear garden is enclosed by double gates and has a lawn with mature flowerbeds and borders and a block paved driveway for off road parking.



Road Map



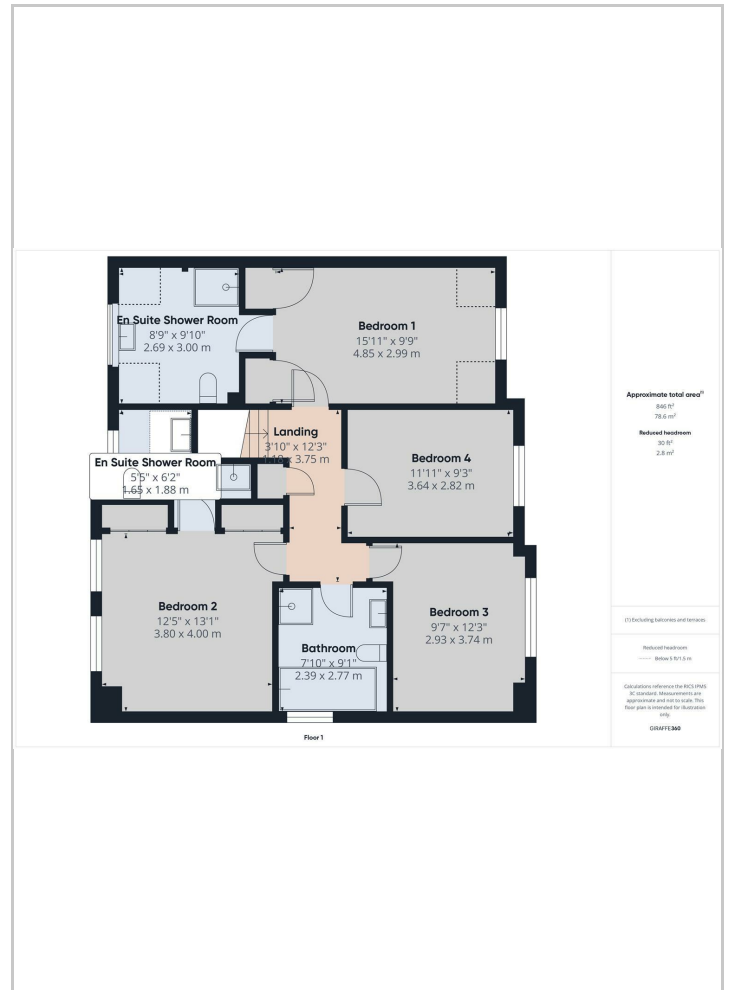
Hybrid Map



Terrain Map



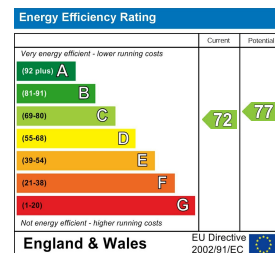
Floor Plans



Viewing

Please contact our Mellors Estate Agents Office on 01298 24383 if you wish to arrange a viewing appointment for this property or require further information.

Energy Efficiency Graph



Important Notice

Mellors Estate Agents, their solicitors and joint agents give notice that:

- They are not authorised to make or give any representations or warranties in relation to the property either here or elsewhere, either on their own behalf or on behalf of their client or otherwise. They assume no responsibility for any statement that may be made in these particulars. These particulars do not form part of any offer or contract and must not be relied upon as statements or representation of fact.
- Any areas, measurements or distances are approximate. The text, photographs and plans are for guidance only and are not necessarily comprehensive. It should not be assumed that the property has all necessary planning building regulation or other consents and Mellors Estate Agents have not tested any services, equipment or facilities. Purchasers must satisfy themselves by inspection or otherwise.

1 Grove Parade, Buxton, Derbyshire, SK17 6AJ
Tel: 01298 24383 Email: info@mellors.org.uk www.mellors.org.uk