



VIEWINGS SUSPENDED

Due to high demand for this property, we have made the decision to suspend viewings.

If you have already enquired about this property, we will get back to you in due course.

Thank you for your patience.

East Street, Lydney, GL15 6TG
£750 Per Month





£750 Per Month

The Granary East Street

Lydney, GL15 6TG

- Small side garden available for tenant use
- Beautiful rural setting full of character and charm
- Ideal for those seeking a peaceful village lifestyle
- One double bedroom

Dean Estate Agents are delighted to offer this charming Old Granary apartment to the rental market, located in the picturesque village of St. Briavels. An ideal property for single occupancy.

Accessed via a set of external steps, the apartment opens into a beautifully refurbished open-plan living room and kitchen, finished to a high standard throughout. The accommodation includes one double bedroom and a modern shower room.

Tenants will also benefit from use of a small garden area to the side of the property, perfect for enjoying the tranquil surroundings.

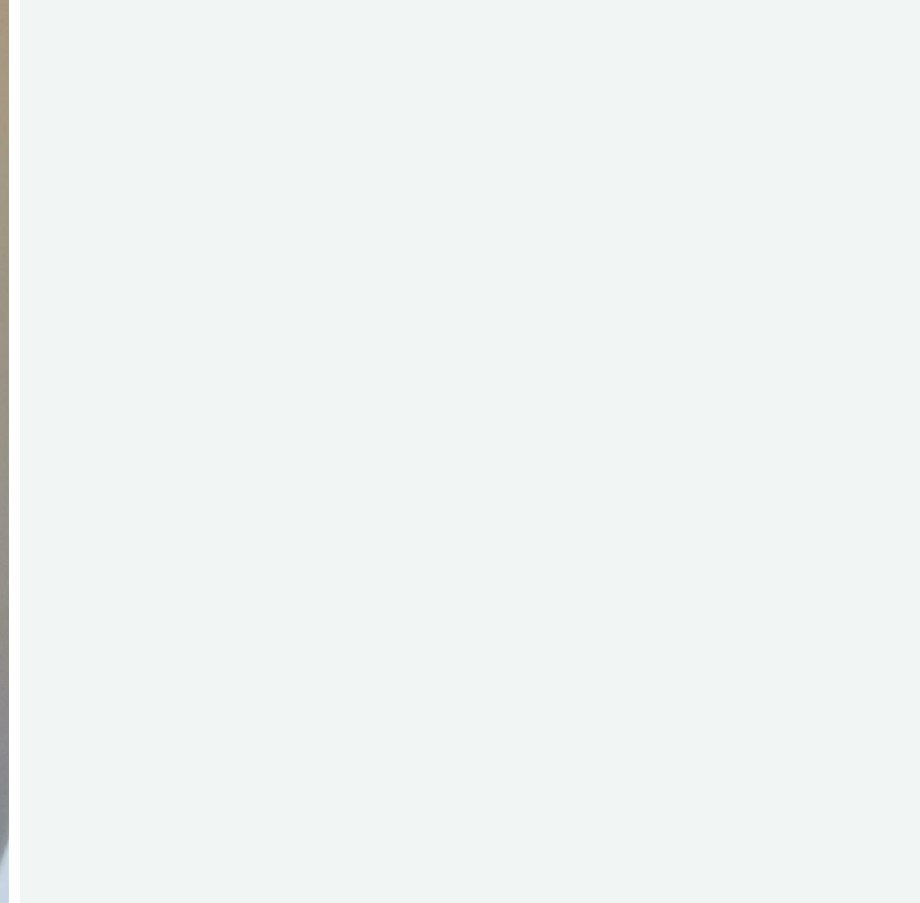
A viewing is highly recommended to fully appreciate the character, charm, and idyllic setting this unique home has to offer.

Available from end of October 25.

Propane gas heating.

Off road parking for 1 vehicle.





Directions





A green toaster with a silver 'S' logo on the front panel, positioned on the left side of the countertop.

Three green ceramic jars with wooden lids and a silver 'S' logo, arranged in a row on the countertop.

A green electric kettle with a silver 'S' logo, placed on the countertop near the sink.

A silver metal dish rack with two tiers, positioned over the stainless steel sink.

A green toaster oven with a digital display and control knobs, located on the countertop to the right of the sink.

A green plastic container holding several kitchen utensils, including spatulas and a whisk, located on the countertop.

A white Beko front-loading washing machine integrated under the countertop. The brand name 'beko' is visible on the top left of the door, and there are energy efficiency labels on the top right.

A built-in oven with a stainless steel front panel. A white and black checkered towel is hanging inside the oven door. The brand name 'Midea' is visible at the bottom of the door.

A thick wooden beam mounted horizontally above the window, with thin vertical supports on either side.

A window with a wooden frame, showing a view of a brick wall outside. The window is partially covered by a wooden beam above it.

A small potted plant with reddish-brown leaves, sitting on the windowsill.

White upper kitchen cabinets with silver handles, located above the countertop on the right side.

White lower kitchen cabinets with silver handles, located under the countertop on the left side.

Floor Plans



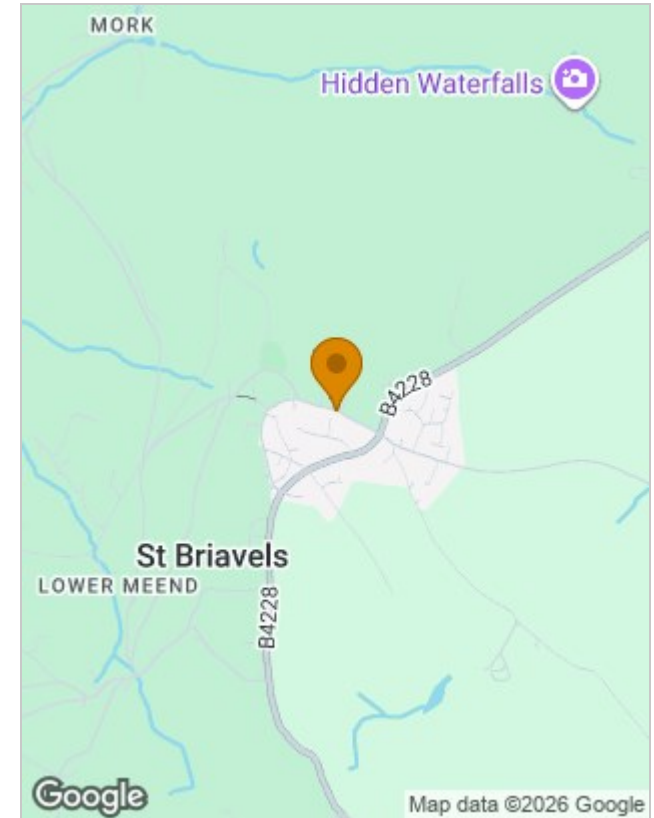
Viewing

Please contact our Coleford Office on 01594 835751 if you wish to arrange a viewing appointment for this property or require further information.

The particulars are set out as a general outline only for the guidance of intended purchasers or lessees, and do not constitute, any part of a contract. Nothing in these particulars shall be deemed to be a statement that the property is in good structural condition or otherwise nor that any of the services, appliances, equipment or facilities are in good working order. Purchasers should satisfy themselves of this prior to purchasing.

14 St John Street, Coleford, Gloucestershire, GL16 8AR
 Tel: 01594 835751 Email: coleford@deanestateagents.co.uk www.deanestateagents.co.uk

Location Map



Energy Performance Graph

