



**A WELL PRESENTED ONE BEDROOM END OF TERRACE GROUND FLOOR
MAISONETTE**

Langton Grove, Northwood, Middlesex, HA6 2PS

ROBSONS

Langton Grove, Northwood, Middlesex, HA6 2PS

GROUND FLOOR • SPACIOUS LIVING ROOM
• KITCHEN • DOUBLE BEDROOM • FAMILY
BATHROOM • REAR GARDEN • CHAIN FREE

Description

This well-presented end of terrace ground-floor one-bedroom maisonette offers the perfect blend of privacy and convenience.

With its own private entrance, the property features a spacious living/dining room with doors leading out to a private patio area. There is a well-equipped kitchen, a double bedroom and a bathroom.

One of the standout features of this maisonette is the private outdoor area as well as direct access to the communal gardens, providing even more green space to enjoy. Additionally, on-street parking is available.

A wonderful option for those seeking a low-maintenance, private space with outdoor appeal and offered to the market with no onwards chain.





Northwood provides a range of shopping facilities including Waitrose supermarket, a variety of restaurants and other amenities with the Metropolitan Line station providing access to Baker Street and the City. There is a plethora of state and private schooling together with a wide choice of recreational facilities, which include golf courses and fitness centres. The M1, M40 and M25 motorways are also accessible.

NB this property is situated within the proximity of the ULEZ, if your vehicle does not comply charges may apply.

Additional Information

Tenure: Leasehold

Lease Length: 143 years remaining

Service Charge: £1,100 p/a

Local Authority: London Borough of Hillingdon

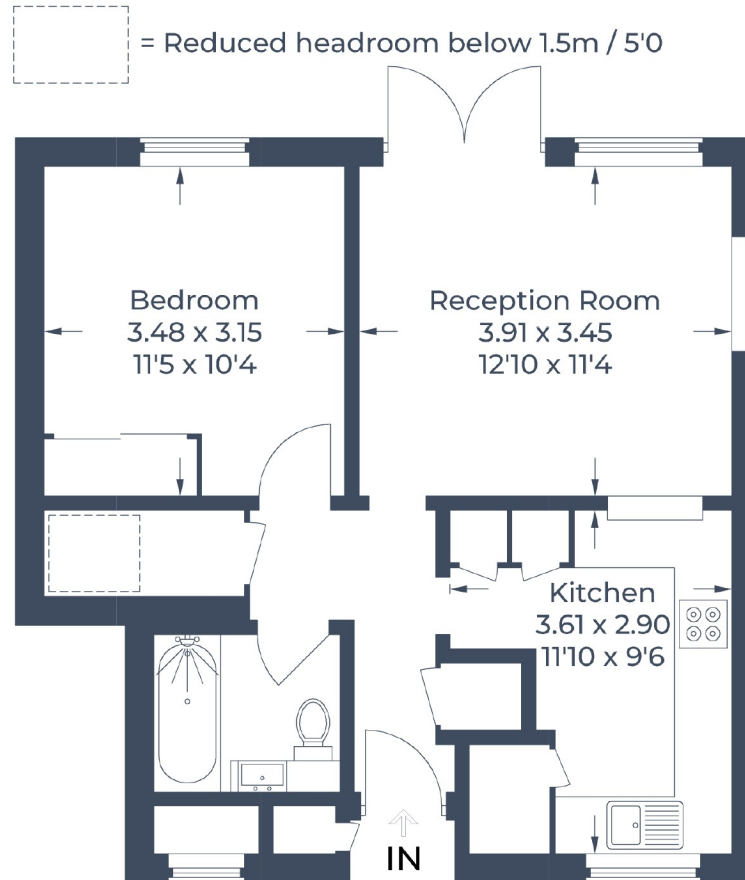
Council Tax Band: C

Energy Efficiency Rating: C

For additional information, please refer to www.robsonswb.com or call us on: 01923 835355.



Approximate Gross Internal Area = 47.7 sq m / 513 sq ft
External Store = 0.3 sq m / 3 sq ft
Total = 48.0 sq m / 516 sq ft



Ground Floor

Illustration for identification purposes only,
measurements are approximate, not to scale.
© CJ Property Marketing Produced for Robsons

ROBSONS

7 Clive Parade, Northwood, HA6 2QF
Tel: 01923 835355 Email: northwood@robsonswb.com
www.robsonswb.com

SCAN TO VISIT



OUR WEBSITE

Important notice: Robsons, their clients and any joint agents give notice that 1: They are not authorised to make or give any representations or warranties in relation to the property either here or elsewhere, either on their own behalf or on behalf of their client or otherwise. They assume no responsibility for any statement that may be made in these particulars. These particulars do not form part of any offer or contract and must not be relied upon as statements or representations of fact. 2: Any areas, measurements or distances are approximate. Plot sizes and dimensions are taken from Promap and are approximate. The text, photographs and plans are for guidance only and are not necessarily comprehensive. It should not be assumed that the property has all necessary planning, building regulation or other consents and Robsons have not tested any services, equipment or facilities. Purchasers must satisfy themselves by inspection or otherwise.