



Calderstones Court Beech Lane

Calderstones, Liverpool, L18 3ES

Offers over £210,000

 2  1  1  E



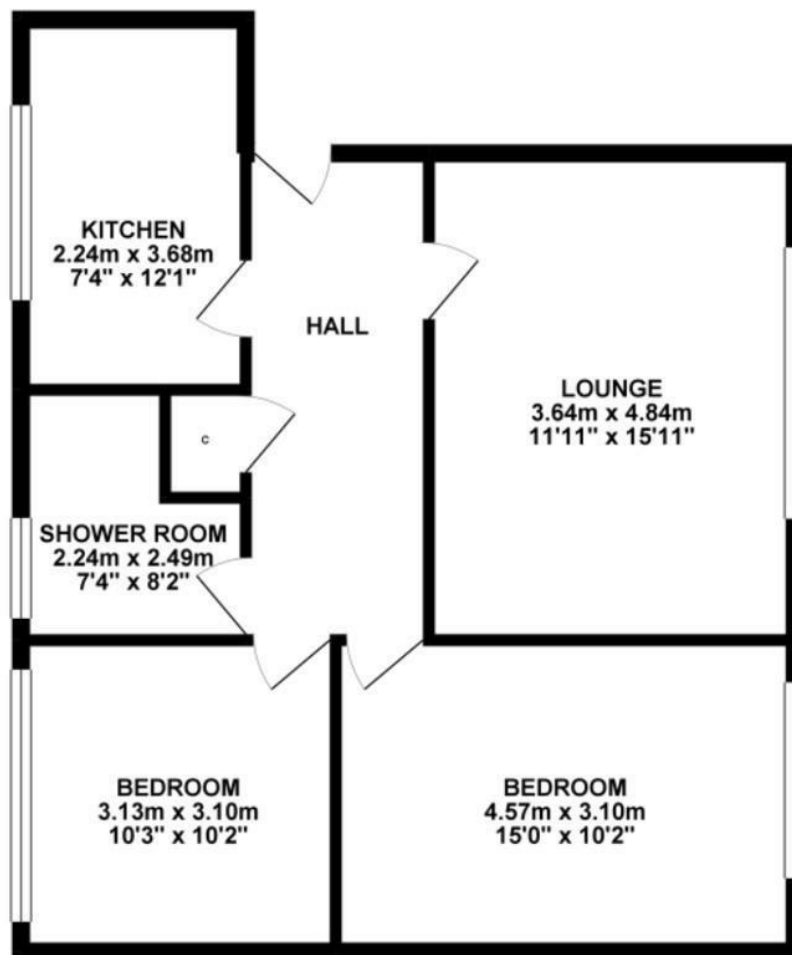
Calderstones Court Beech Lane

Calderstones, Liverpool, L18 3ES

Offers over £210,000



GROUND FLOOR 64.06 sq. m.
(689.57 sq. ft.)



TOTAL FLOOR AREA : 64.06 sq. m. (689.57 sq. ft.) approx.

Whilst every attempt has been made to ensure the accuracy of the floorplan contained here, measurements of doors, windows, rooms and any other items are approximate and no responsibility is taken for any error, omission or mis-statement. This plan is for illustrative purposes only and should be used as such by any prospective purchaser. The services, systems and appliances shown here have not been tested and no guarantee as to their operability or efficiency can be given.
Made with Makropix ©2025

Tel: 01516013003



