



FARMHOUSE ROAD, SW16

£550,000

- Three bedrooms
- Potential to extend
- Large garden
- Excellent transport links
- Close to local amenities
- Energy rating: D





ABOUT THE HOME

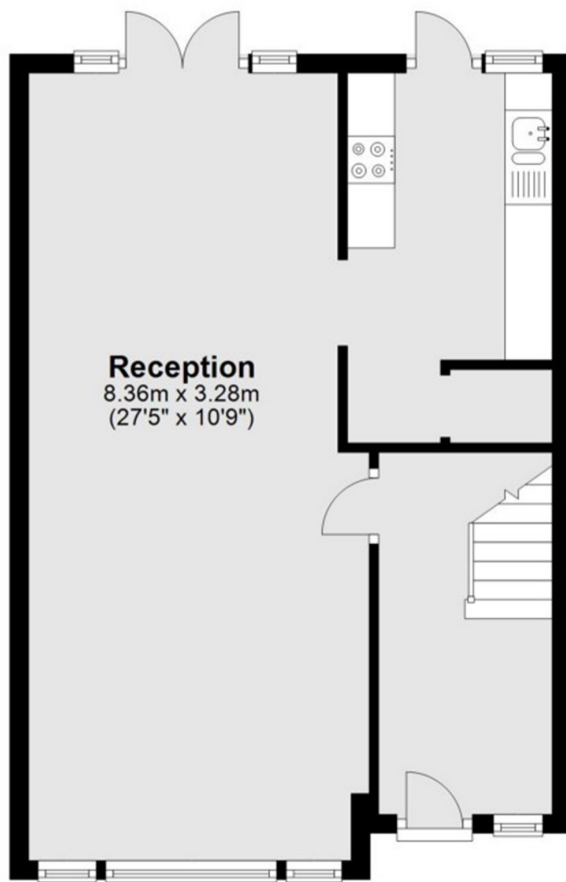
A three-bedroom family home, with a great sized double reception room and a large private garden. The property has great potential to extend outwards and upwards and is situated close by to Streatham Common station.

Farmhouse Road is very conveniently placed in Streatham Vale affording easy access to Streatham Common station. Being close to the green open spaces of Streatham common and within easy walking distance of Greyhound lane with its developing mini high street. Commuters can access bus routes into Brixton and beyond from Streatham High Road and swift connections to London Victoria via Clapham Junction from Streatham common station.

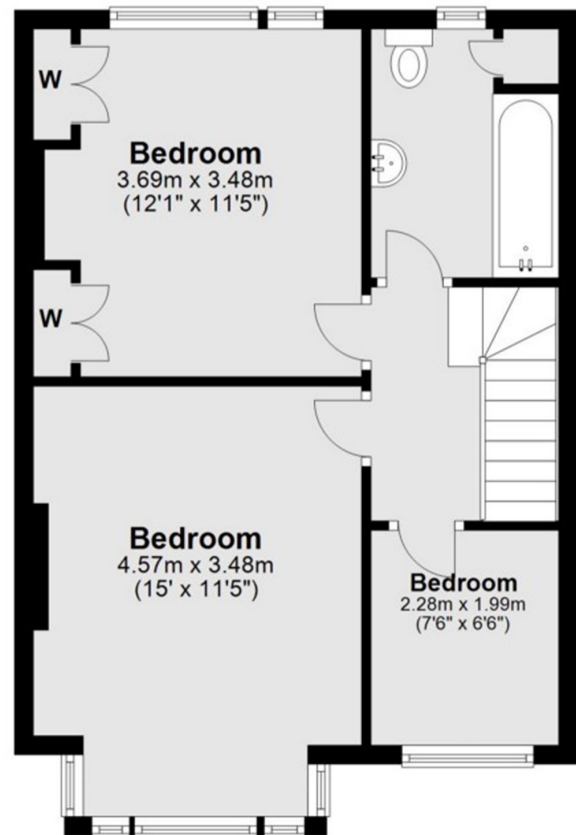




Ground Floor



First Floor



Total area: approx. 89.3 sq. metres (960.9 sq. feet)

JACKSONS STREATHAM

1-3 De Montfort Parade,
Streatham High Road,
Sales: 020 8487 3179
Lettings: 020 8487 3180

Energy Rating: D We aim to make our particulars both accurate and reliable. However they are not guaranteed; nor do they form part of an offer or contract. If you require clarification on any points then please contact us, especially if you're traveling some distance to view. Please note that appliances and heating systems have not been tested and therefore no warranties can be given as to their good working order.