

linkagency



Marshfield Road, Goole, East Yorkshire, DN14 5JQ

£695 PCM



6 Marshfield Road

DN14 5JQ, East Yorkshire

- Large reception room
- Enclosed rear garden
- Close to all amenities
- Available September 2026

This two bedroom mid-terrace cottage is close to Goole town centre and benefits from a spacious reception room with patio doors leading to an extensive rear garden. The property is ideal for a professional couple.

This home briefly comprises;

Entrance into reception room big enough for lounge and dining area, fitted kitchen with freestanding cooker/hob and space for white goods. One double bedroom to the first floor and a second room best suited as an office. Bathroom with three-piece suite consisting of bath with overhead shower, WC and wash basin.

Large enclosed rear garden.

On-street parking is available to the front of the property.

A holding deposit of £160.00 is payable on application.



Location and EPC Graph



Energy Efficiency Rating

	Current	Potential
Very energy efficient - lower running costs		
(92 plus) A		
(81-91) B		86
(69-80) C		
(55-68) D	65	
(39-54) E		
(21-38) F		
(1-20) G		
Not energy efficient - higher running costs		
England & Wales	EU Directive 2002/91/EC	



Extra Info

Council tax band: A

To arrange a viewing please register your interest on our website via the tenancy application.

For additional information please contact our office on 01405 768401 or email: enquiries@linkagency.co.uk



Floorplan

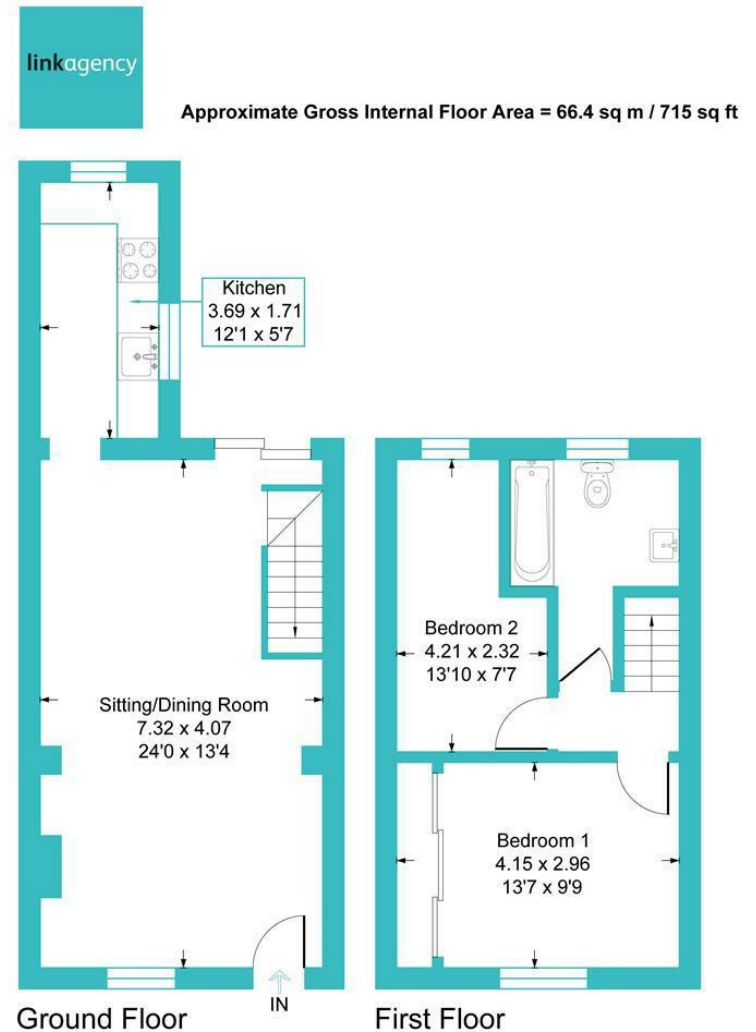


Illustration for identification purposes only, measurements are approximate, not to scale.