

## 88 Northbourne Street, Gateshead, NE8 4AH

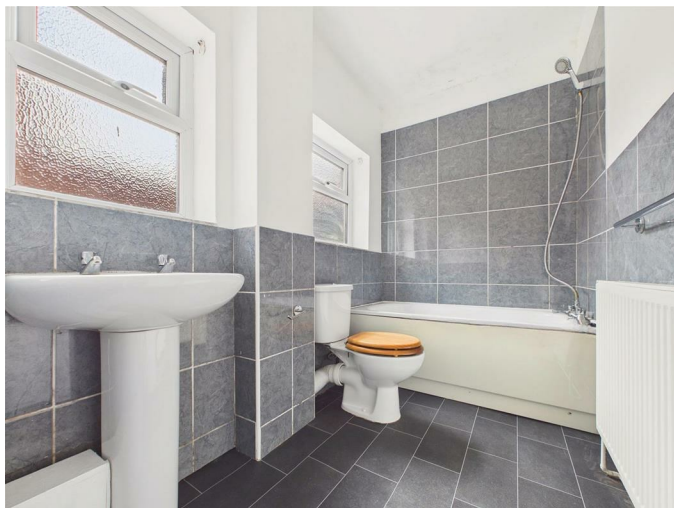
Offers Over £65,000

Welcome to the market this two-bedroom ground floor flat located on Northbourne Street in Gateshead. This property has been freshly decorated and features new flooring throughout, providing a modern and inviting atmosphere. As you enter, you are greeted by a spacious hallway that leads to a comfortable lounge, perfect for relaxing or entertaining guests. The well-appointed kitchen offers ample space for meal preparation. The flat boasts two bedrooms, with the main bedroom featuring an attractive fire surround, adding a touch of character to the space and a three piece bathroom suite finished off the accommodation. Externally there is a private rear yard, providing a lovely outdoor space for enjoying the fresh air. This flat is an ideal opportunity for first-time buyers looking to step onto the property ladder or for investors seeking a buy-to-let option in a desirable area. With its fresh decor and convenient layout, this property is ready for you to move in and make it your own. Don't miss the chance to view this lovely flat and discover all it has to offer.

## ENTRANCE HALLWAY



## BATHROOM/W.C



## LOUNGE

15'7" x 12'1" (4.75 x 3.69 )



## BEDROOM ONE

14'0" x 12'8" (4.28 x 3.87)



## KITCHEN

11'5" x 7'10" (3.50 x 2.40 )



## BEDROOM TWO

12'7" x 7'4" (3.85 x 2.25)



## EXTERNAL

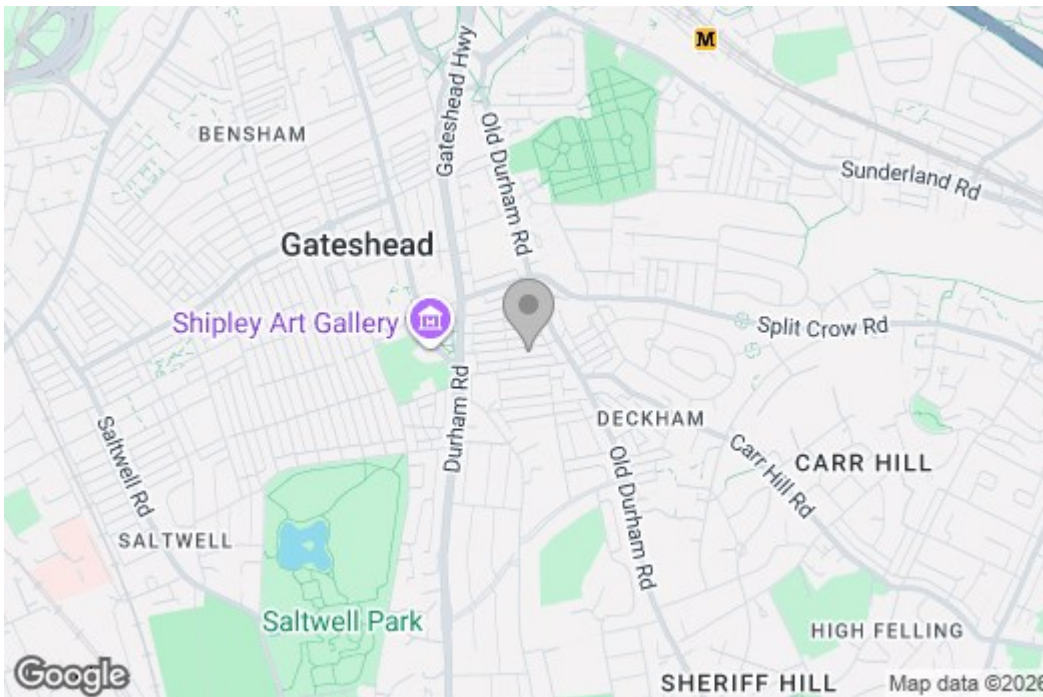


### Property disclaimer

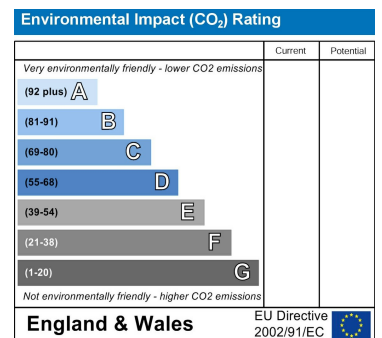
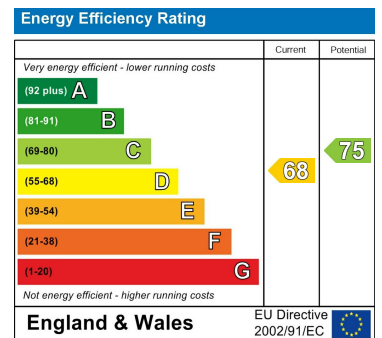
**IMPORTANT NOTE TO PURCHASERS:** We endeavour to make our sales particulars accurate and reliable, however, they do not constitute or form part of an offer or any contract and none is to be relied upon as statements of representation or fact. The services, systems and appliances listed in this specification have not been tested by us and no guarantee as to their operating ability or efficiency is given. All measurements have been taken as a guide to prospective buyers only, and are not precise. Floor plans where included are not to scale and accuracy is not guaranteed. If you require clarification or further information on any points, please contact us, especially if you are travelling some distance to view. Fixtures and fittings other than those mentioned are to be agreed with the seller. We cannot also confirm at this stage of marketing the tenure of this house.

# Floor Plan

## Area Map



## Energy Efficiency Graph



These particulars, whilst believed to be accurate are set out as a general outline only for guidance and do not constitute any part of an offer or contract, purchaser should not rely on them as statements of representation of fact, but must satisfy themselves by inspection or otherwise as to their accuracy. No person in this firm's employment has the authority to make or give a representation or warranty in respect of the property.