

Yellowhammer Court, Colindale, NW9

From £175,000

 0  1  1



Benjamin Stevens is pleased to present this top floor chain free studio apartment in Yellowhammer Court.

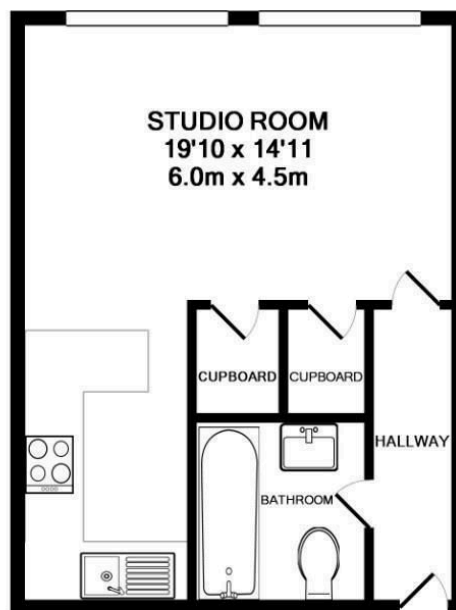
Accommodation comprises large studio room, kitchen area, and bathroom.

Ideal location for access to shopping and amenities, ideal buy to let investment.

Early viewings are highly recommended via vendor's sole agents Benjamin Stevens.

Key Features

- Studio
- Chain Free
- Allocated Parking
- 0.4 Miles from Colindale Station
- Top Floor
- Great Buy to Let
- Ideal for First Time Buyers
- Good Location
-
-



TOTAL APPROX. FLOOR AREA 295 SQ.FT. (27.4 SQ.M.)

Whilst every attempt has been made to ensure the accuracy of the floor plan contained here, measurements of doors, windows, rooms and any other items are approximate and no responsibility is taken for any error, omission, or mis-statement. This plan is for illustrative purposes only and should be used as such by any prospective purchaser. The services, systems and appliances shown have not been tested and no guarantee as to their operability or efficiency can be given

Made with Metropix ©2014