



Brudenell Road, SW17

£400,000

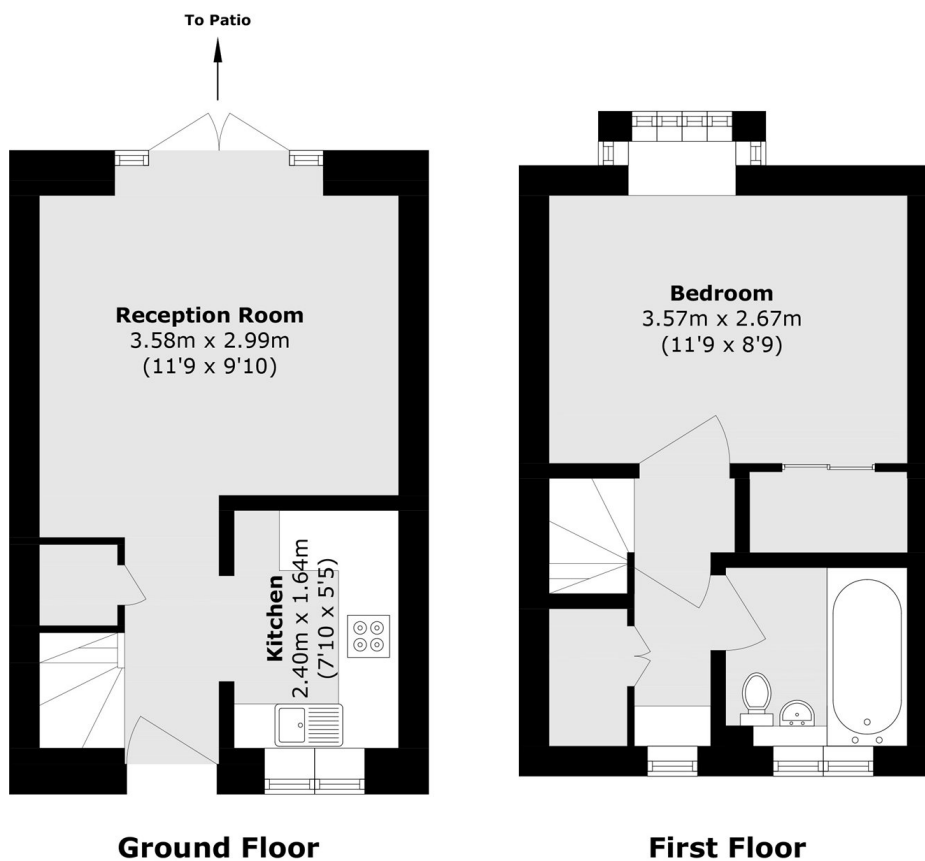
A charming and rare one bedroom freehold home positioned moments from Tooting Bec Common with a large reception room, a separate kitchen and large double bedroom and three piece bathroom. The property also benefits from a private garden and off-street parking.

Brudenell Road is a quiet tree lined residential road in the heart of Tooting Bec with unmatched access to the vast shops, bars and amenities only a strong stroll away. The green open spaces of Tooting Bec Common and transport links of Tooting Bec Underground stations are a stones throw away.

Features

- One Bedroom
- Freehold Home
- Private Garden
- Blank Canvas
- Desirable Location
- Off-Street Parking

Brudenell Road, London, SW17



Ground Floor

First Floor

Total area (approx.): 39.9 sq. m (429.5 sq. ft)