

# Park Row



**Chestnut Avenue, Goole, DN14 6SZ**

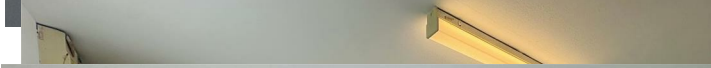
**Offers Over £150,000**



**\*\*CLOSE TO TOWN CENTRE\*\*GOOD COMMUTER LINKS\*\*** Situated in Goole, this end terrace property briefly comprises: Living Room and Kitchen Diner. To the First Floor two Bedrooms and a Bathroom. Externally, the property has enclosed rear garden with a decking area. **VIEWING IS HIGHLY RECOMMENDED TO FULLY APPRECIATE THE STYLE THIS PROPERTY HAS TO OFFER. RING US 7 DAYS TO BOOK A VIEWING. 'WE OPEN UNTIL 8PM MONDAY TO THURSDAY, 5.30 FRIDAYS, 5.00 SATURDAYS AND 11.00 - 3.00 SUNDAYS'.**









## PROPERTY OVERVIEW

This well presented two bedroom end terrace home in Goole, offers comfortable living across two floors. The ground floor features a bright living room and a spacious kitchen-diner, perfect for everyday living and entertaining. Upstairs, there are two double bedrooms and a family bathroom. Outside, the property benefits from a generous rear garden with a decking area, ideal for relaxing or outdoor dining, along with a front garden and a paved walkway leading to the front door.

## FIRST FLOOR ACCOMMODATION

### Living Room

19'4" x 11'5" (5.91m x 3.49m)

### Kitchen Diner

14'11" x 12'9" (4.55m x 3.91m )

## SECOND FLOOR ACCOMMODATION

### Bedroom One

14'11" x 11'1" (4.55m x 3.39m )

### Bedroom Two

11'5" x 8'2" (3.49m x 2.50m )

### Bathroom

8'3" x 6'5" (2.52m x 1.97m)

## EXTERIOR

### Front

Lawned area with a paved walkway to front door.

### Rear

Enclosed lawned garden with a raised decking area.

## DIRECTIONS

From our office on Pasture Road in Goole, head south and turn left onto Boothferry Road (A614). Continue straight for a short distance, then turn left onto Western Road. Follow it until you reach Chestnut Avenue where the property can be clearly be identified by our Park Row Properties 'For Sale' board.

## HEATING AND APPLIANCES

The heating system and any appliances (including Burglar Alarms where fitted) mentioned in this brochure have not been tested by Park Row Properties. If you are interested in purchasing the property we advise that you have all services and appliances tested before entering a legal commitment to purchase.

## UTILITIES, BROADBAND AND MOBILE COVERAGE

Electricity: Mains

Heating: Gas

Sewerage: Mains

Water: Mains

Broadband: Ultrafast

Mobile: 5G

Please note: The Utilities, Broadband and Mobile Coverage for the property have been advised by the Vendor or obtained from online sources. We strive to ensure these details are accurate and reliable, however, we advise any potential buyer to carry out their own enquiries before proceeding.

## TENURE, LOCAL AUTHORITY AND TAX BANDING

Tenure: Freehold

Local Authority: East Yorkshire

Tax Banding: A

Please note: The Tenure, Local Authority and Tax Banding for the property have been advised by the Vendor or obtained from online sources. We strive to ensure these details are accurate and reliable, however, we advise any potential buyer to carry out their own enquiries before proceeding.

## VIEWINGS


Strictly by appointment with the sole agents.

If there is any point of particular importance to you we will be pleased to provide additional information or to make any further enquiries. We will also confirm that the property remains available. This is particularly important if you are travelling some distance to view the property.

## MAKING AN OFFER

In order to comply with the Estate Agents (Undesirable Practices) Order 1991, Park Row Properties are required to verify "the status of any prospective purchaser... This includes the financial standing of that purchaser and his ability to exchange contracts". To allow us to comply with this order and before recommending acceptance of any offers, and subsequently making the property 'SOLD' each prospective purchaser will be required to demonstrate to 'Park Row Properties' that they are financially able to proceed with the purchase of the property.

We provide truly Independent Mortgage Advice. Unlike many companies we are not tied, and more importantly not targeted to any Lender. We have instant on-line



access to over 1000 mortgage deals provided by over 100 Lenders ensuring we are unbeatable when identifying and recommending your new mortgage or re-mortgage requirements.

Your home is at risk if you do not keep up repayments on a mortgage or other loan secured on it. Written quotations available on request. Life assurance is usually required.

To arrange a no obligation appointment please contact your local office.

## **MEASUREMENTS**

These approximate room sizes are only intended as general guidance. You must verify the dimensions carefully before ordering carpets or any built-in furniture.

## **OPENING HOURS**

**CALLS ANSWERED :**

Mon, Tues, Wed & Thurs - 9.00am to 8.00pm

Friday - 9.00am to 5.30pm

Saturday - 9.00am to 5.00pm

Sunday - 11.00am to 3.00pm

**TO CHECK OFFICE OPENING HOURS PLEASE CONTACT THE RELEVANT BRANCHES ON:**


SELBY - 01757 241124

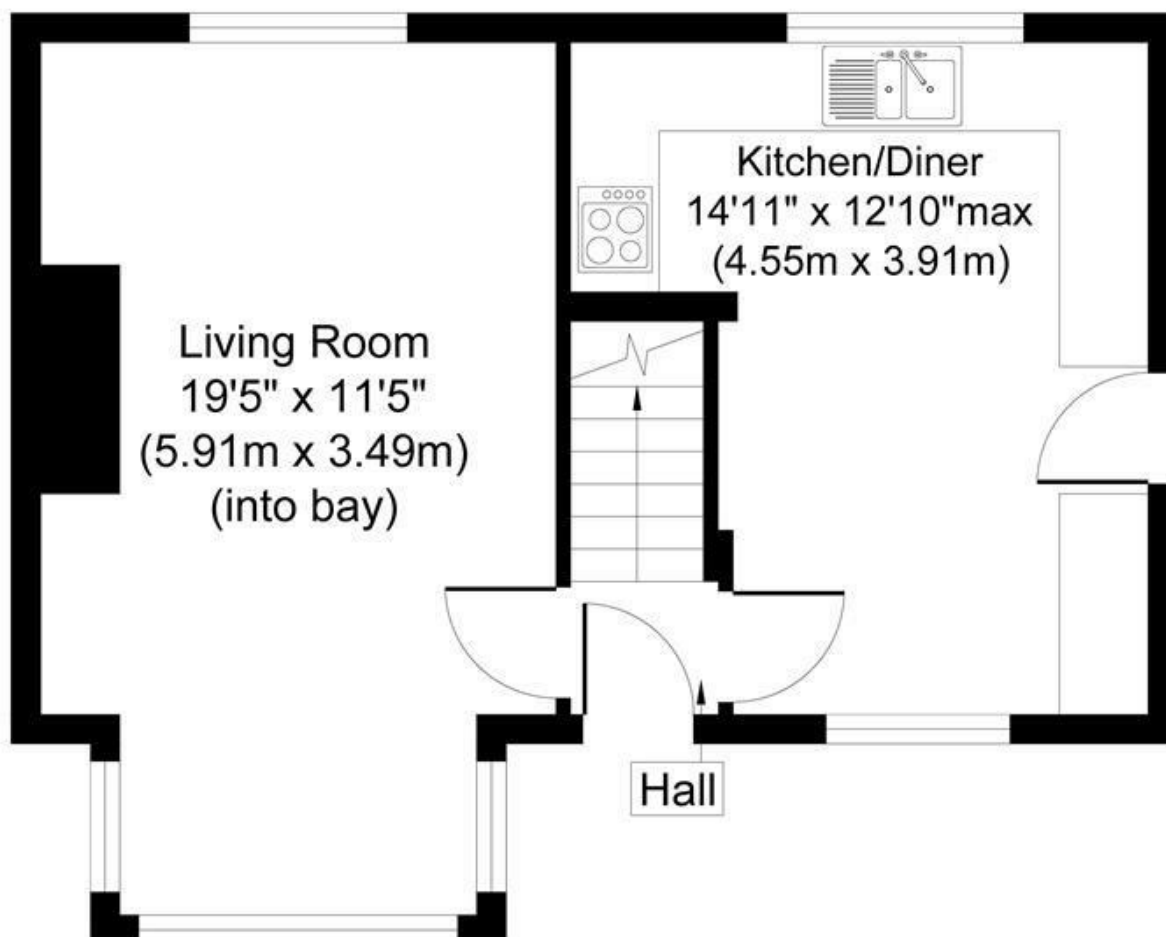
GOOLE - 01405 761199

SHERBURN IN ELMET - 01977 681122

PONTEFRACT - 01977 791133

CASTLEFORD - 01977 558480

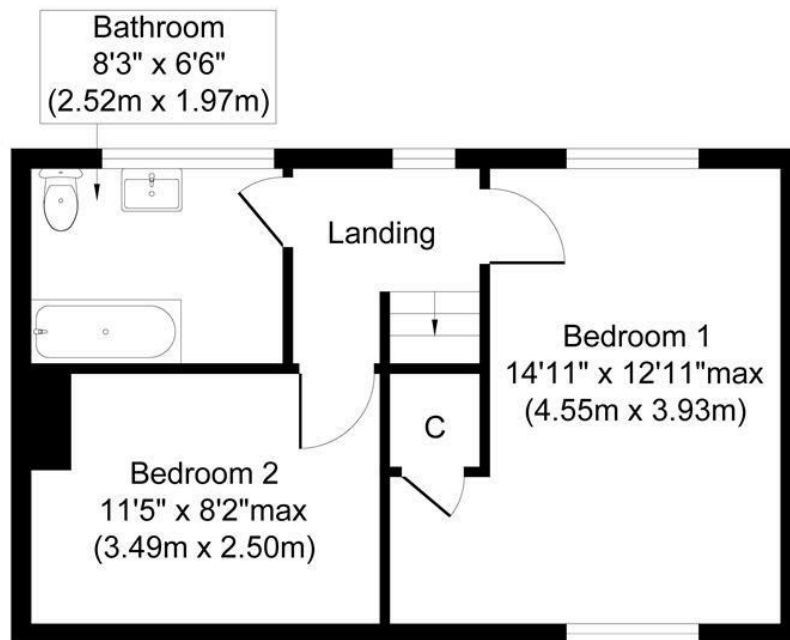




**Ground Floor**  
**Approximate Floor Area**  
**403 sq. ft**  
**(37.41 sq. m)**

Whilst every attempt has been made to ensure the accuracy of the floor plan contained here, measurements of doors, windows, rooms and any other items are approximate and no responsibility is taken for any error, omission, or mis-statement. The measurements should not be relied upon for valuation, transaction and/or funding purposes. This plan is for illustrative purposes only and should be used as such by any prospective purchaser or tenant. The services, systems and appliances shown have not been tested and no guarantee as to their operability or efficiency can be given.

Copyright V360 Ltd 2025 | [www.houseviz.com](http://www.houseviz.com)



**First Floor**  
**Approximate Floor Area**  
**367 sq. ft**  
**(34.12 sq. m)**

Whilst every attempt has been made to ensure the accuracy of the floor plan contained here, measurements of doors, windows, rooms and any other items are approximate and no responsibility is taken for any error, omission, or mis-statement. The measurements should not be relied upon for valuation, transaction and/or funding purposes. This plan is for illustrative purposes only and should be used as such by any prospective purchaser or tenant. The services, systems and appliances shown have not been tested and no guarantee as to their operability or efficiency can be given.  
 Copyright V360 Ltd 2025 | www.houseviz.com

**T** 01405 761199  
**W** [www.parkrow.co.uk](http://www.parkrow.co.uk)

40-42 Pasture Road, Goole, East Yorkshire, DN14 6EZ  
[goole@parkrow.co.uk](mailto:goole@parkrow.co.uk)

