



Grosvenor Park, SE5

£725,000

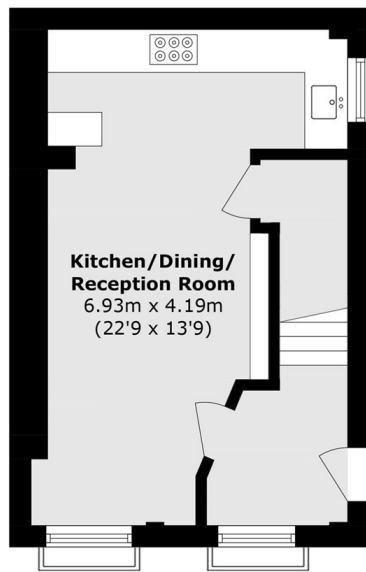
A charming two double bedroom freehold house benefitting from direct access onto west facing communal gardens. This flexible home is split over three floors, comprising of a sociable open plan kitchen living room, providing adequate space for entertaining. Furthermore there are two bathrooms, good storage throughout and an allocated parking space.

Peaceful Grosvenor Park is located in between two fantastic parks in Burgess Park and Kennington Park. This lovely location is within walking distance from Kennington and Oval tube stations (Northern Line). Close by is a vast array of trendy local amenities which provide a real hub of activity for the local community.

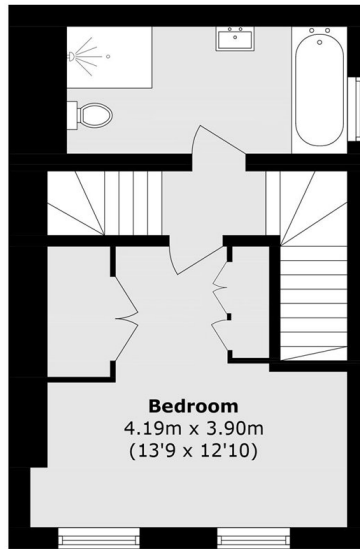
Features

- Freehold
- Two Double Bedrooms
- Good Condition
- Allocated Parking Space

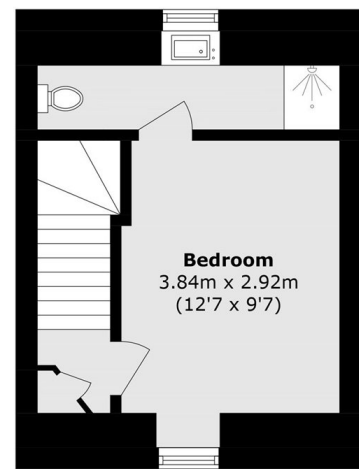
Grosvenor Park, London, SE5



Ground Floor



First Floor



Second Floor

Total area (approx.): 82.9 sq. m (960.1 sq. ft)