

1 Chatsworth Grove, Whalley Range, Manchester, M16 8GY



**JP&Brimelow**  
ESTATE AGENTS



4 1 2 D

\*\*\*VIDEO TOUR AVAILABLE\*\*\* An attractive and beautifully presented, FOUR DOUBLE BEDROOM, end-terrace property. Situated in a quiet, leafy residential area of Whalley Range, off Victoria Road.

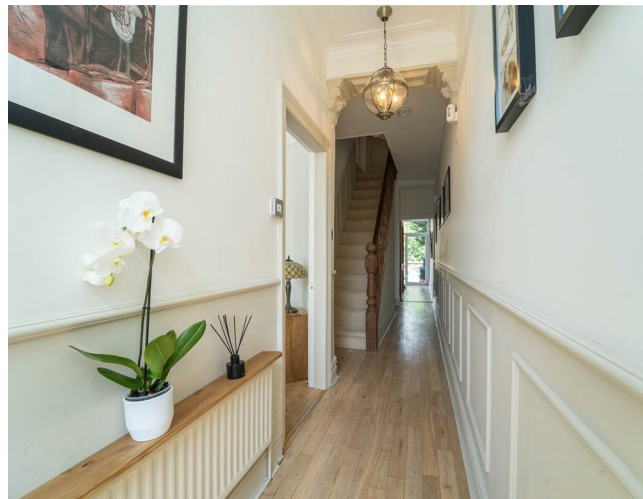
Conveniently located near several excellent primary schools, including the Ofsted-rated Outstanding Manley Park Primary School, as well as Upper Chorlton Road and the amenities of Chorlton. The property also offers easy access to transport links to Media City via Metrolink or bus.

This period, bay-fronted property is spread over four floors and in brief offers a welcoming entrance hall which allows access down into the useful chamber cellar, a stylish lounge to the front aspect, a contemporary fitted kitchen which allows access out into the rear garden, and a delightful dining room with views and access out into the rear enclosed garden.

To the first-floor landing there are two double bedrooms, and a sizable principle complete with bay window, a white three-piece bathroom suite completes this floor. Stairs leading to the second floor reveal an additional good sized double bedroom completing this fantastic property.


Other benefits include gas fired central heating, high ceilings, period features, stripped and varnished floor boards, and a rear enclosed garden.

£460,000





## EPC Chart

Energy Efficiency Rating		Current	Potential
Very energy efficient - lower running costs			
(92 plus) <b>A</b>			<b>85</b>
(81-91) <b>B</b>			
(69-80) <b>C</b>			
(55-68) <b>D</b>		<b>64</b>	
(39-54) <b>E</b>			
(21-38) <b>F</b>			
(1-20) <b>G</b>			
Not energy efficient - higher running costs			
<b>England &amp; Wales</b>			EU Directive 2002/91/EC 



Tenure: Freehold Council Tax Band: B



JP & Brimelow Estate Agents Ltd  
 430 Barlow Moor Road, Manchester, M21 8AD  
 Tel: 0161 8822233  
 E: sales@jpbrimelow.co.uk www.jpandbrimelow.co.uk



**JP & Brimelow**  
 ESTATE AGENTS

NOTICE: JP & Brimelow Estate Agents Ltd for themselves and for the vendors or lessors of this property whose agents they are give notice that:  
 (i) the particulars are set out as a general outline only for the guidance of intending purchasers or lessees, and do not constitute, nor constitute part of, an offer or contract;  
 (ii) all descriptions, dimensions, references to the condition and necessary permissions for use and occupation, and other details are given in good faith and are believed to be correct but any intending purchasers or tenants should not rely on them as statements or representations of fact but must satisfy themselves by inspection or otherwise as to the correctness of each of them;  
 (iii) no person in the employment of JP & Brimelow Estate Agents Ltd has any authority to make or give any representation or warranty whatever in relation to this property.

jpandbrimelowstateagents  
 @jpandbrimelow

