



32 Thornley Close, Abingdon OX14 1GQ



32 Thornley Close

A stone built, two-bedroom semi-detached home well located within this sought after no-through road, benefiting from driveway parking for two vehicles, rear garden with gated side access and modern open plan living.

32 Thornley Close is well-situated in a desirable cul-de-sac location within this small, select development offering easy pedestrian access to many nearby amenities. There is a quick route onto the A34 leading to many important destinations north and south including Oxford city (circa. 6 miles) and Didcot with its useful mainline railway station to London Paddington (circa. 7 miles).

Bedrooms: 2

Bathrooms: 1

Reception Rooms: 1

Council Tax band: C

Tenure: Freehold

EPC Energy Efficiency Rating: C

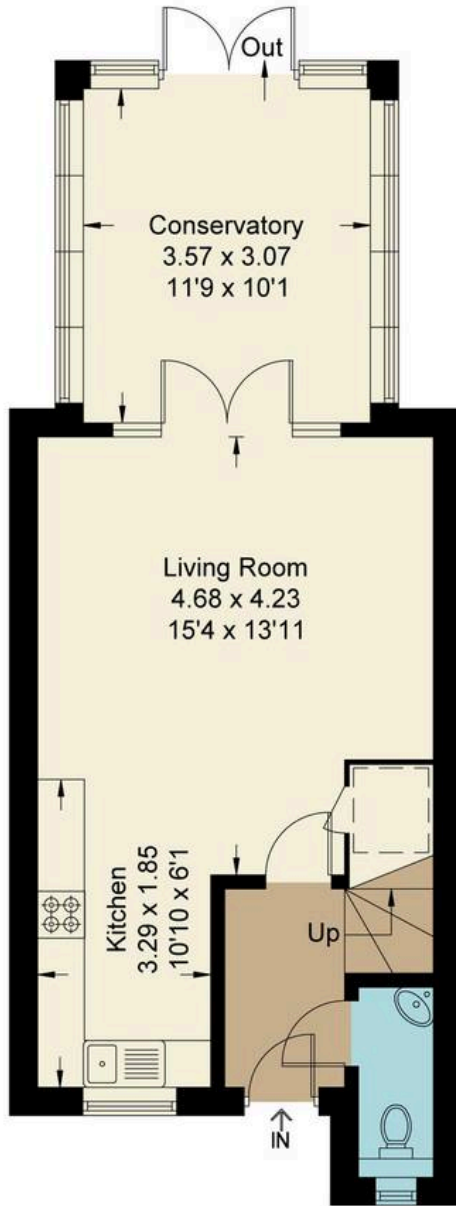




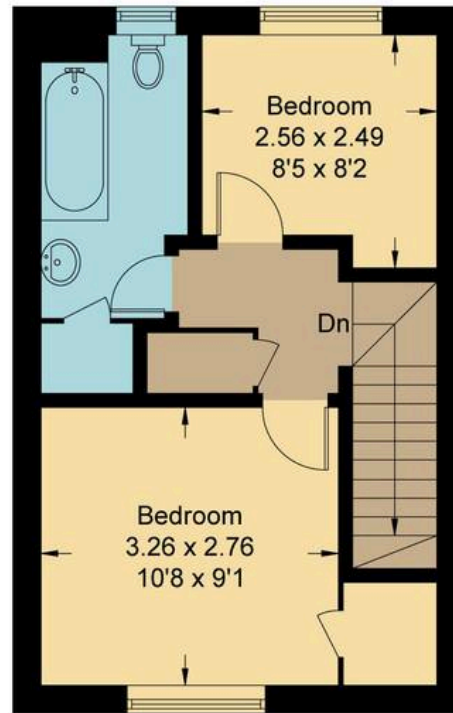
32 Thornley Close

- Entrance hall with stairs rising to the first floor and ground floor WC
- Fitted kitchen to the front aspect, this is open plan to the reception spaces
- Good size living/dining room with doors opening into a spacious conservatory providing panoramic views over the gardens
- To the first floor are two well proportioned bedrooms serviced by family bathroom with white suite
- Externally the property benefits from driveway parking for two, there is gated side access leading to the rear gardens which are predominately laid to lawn
- This property would make an ideal first time or investment purchase



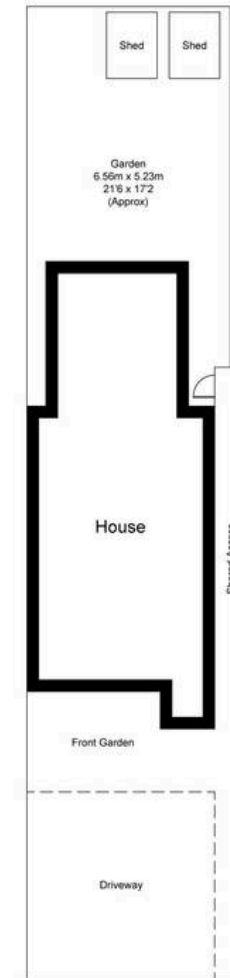


Ground Floor



First Floor

Thornley Close, OX14
Approximate Gross Internal Area = 71.0 sq m / 764 sq ft
For identification only - Not to scale



Not to scale, for illustration and layout purposes only.
© Mortimer Photography. Produced for Hodsons.
Unauthorised reproduction prohibited

 **Hodsons**
...your move, our passion
Sales | Lettings

5 Ock Street, Abingdon,
Oxfordshire, OX14 5AL
T: 01235 553686
E: abingdon@hodsons.co.uk
www.hodsons.co.uk