

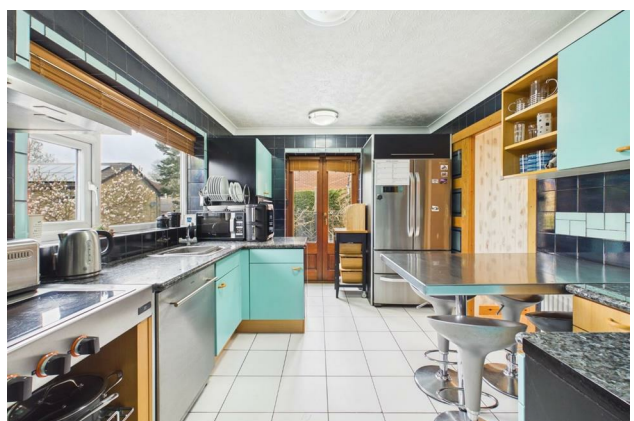
# HUNTERS®

HERE TO GET *you* THERE

**37 Woodvale Crescent, Bingley, BD16 4AJ**

**Asking Price £545,000**

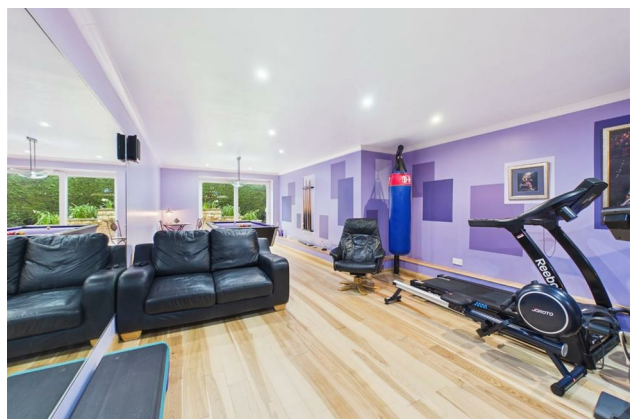
Property Images



# HUNTERS®

HERE TO GET *you* THERE

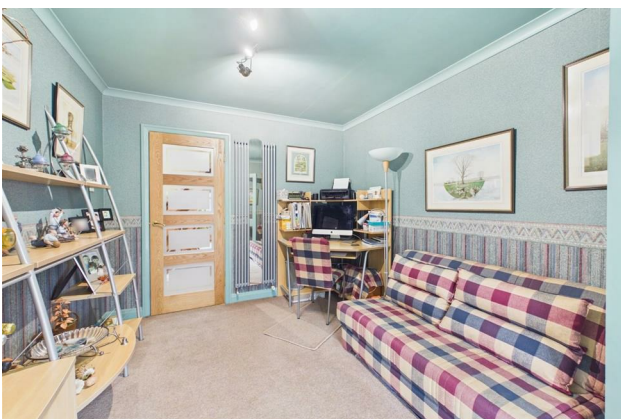
## Property Images



# HUNTERS®

HERE TO GET *you* THERE

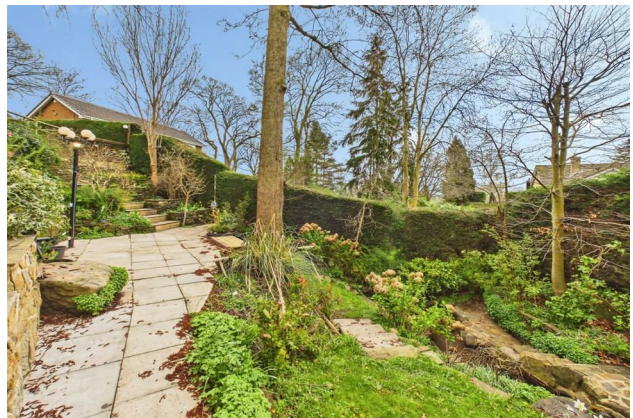
## Property Images



# HUNTERS®

HERE TO GET *you* THERE

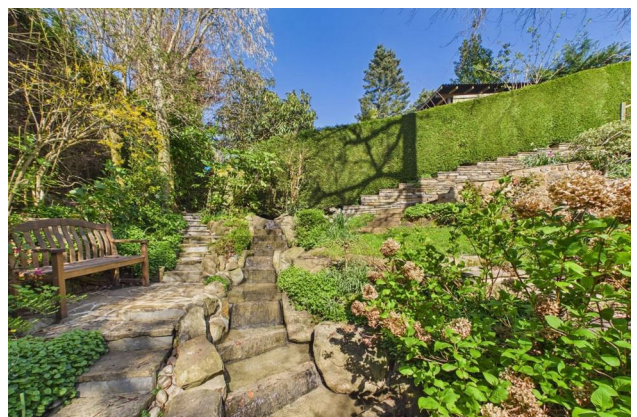
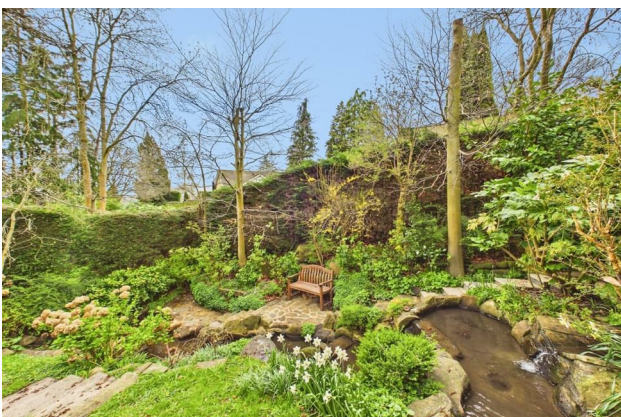
## Property Images



# HUNTERS®

HERE TO GET *you* THERE

## Property Images



# HUNTERS<sup>®</sup>

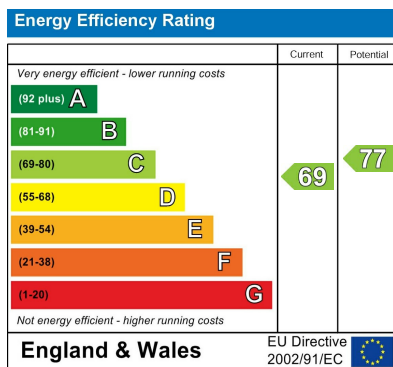
HERE TO GET *you* THERE

## Property Images





## EPC



## Map



## Details

Type: House - Detached Beds: 4 Bathrooms: 3 Receptions: 2 Tenure: Freehold

## Summary

Book Your Viewing Today - A chain free four bedroom detached home that sits in a mature enviable plot

## Features

- Impressive Detached Home • Excellent Residential Location • Many Mature Trees and Shrubs • Adjoining Natural Stream • Out Buildings and Work Shop • Flexible Layout • Parking and Double Garage • Viewing Essential • EPC Rating C • Council Tax Band E