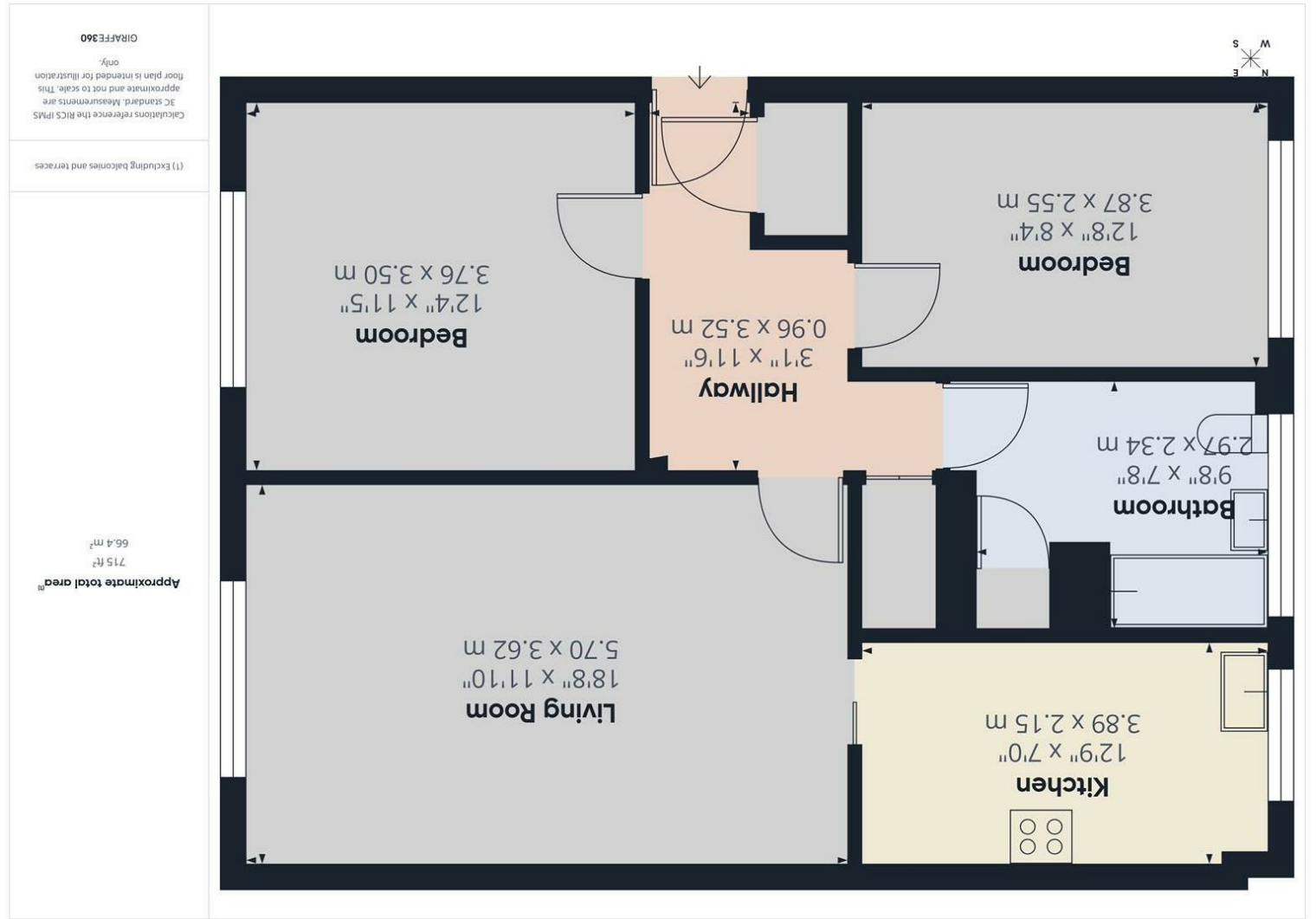


Consumer Protection from Unfair Trading Regulations 2008 We have not tested any apparatus, equipment, fittings or services and so cannot verify that they are in working order or fit for purpose. You are advised to obtain verification from your solicitor or surveyor. References to the tenure of a property are based on information supplied by the seller. We have not had sight of the title documents and a buyer is advised to obtain verification from their solicitor. Items shown in photographs are not included unless specifically mentioned within the sales particulars, but may be available by separate negotiation. We advise you to book an appointment to view before embarking on any journey to see a property, and check its availability.



- Hallway 3'1" x 11'6" (0.96 x 3.52)
- Bedroom 12'8" x 8'4" (3.87 x 2.55)
- Bathroom 9'8" x 7'8" (2.97 x 2.34)
- Kitchen 12'9" x 7'0" (3.89 x 2.15)
- Living Room 18'8" x 11'10" (5.70 x 3.62)
- Bedroom 3'76 x 3.50 (12'4" x 11'5")



30 Sherbourne Close, Bristol, BS15 4QG  
**£1,295 PCM**

PROPERTY TYPE House

BEDROOMS 2

RECEPTION ROOMS 0

BATHROOMS 1

EPC RATING C

COUNCIL TAX BAND A

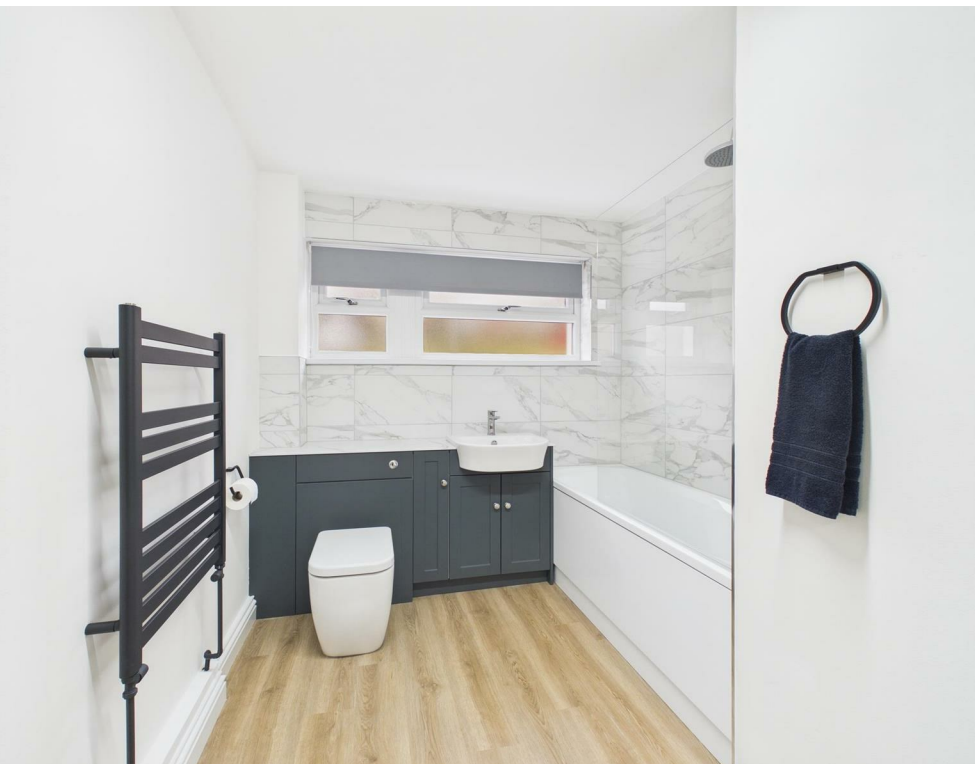


Welcome to this well-proportioned two-bedroom ground floor flat located on Sherbourne Close in the desirable area of Kingswood, Bristol. This property offers a perfect blend of modern living and comfort.

This recently refurbished two bedroom property provides a peaceful retreat, offering plenty of natural light and space for furnishings. The bathroom has also been tastefully updated, featuring modern fixtures and fittings that enhance the overall appeal of the home.

This property benefits from a range of local amenities, including shops, schools, and parks, making it an excellent choice for families and professionals alike. The area is well-connected to Bristol city centre, providing easy access to a vibrant array of shops, restaurants, and cultural attractions.

Available now. EPC C. Council tax band A. Viewings advised.



the location

just a thought...



what the owners will miss