



 3

 1

 1

 C

**Stevenholme Crescent, Bestwood, Nottingham, NG5 5JW**

**DavidJames**  
the estate agent

**£950 Per Month**

## About This Property

A well presented end-terrace house situated close by to frequent transport links and within walking distance of Nottingham City Hospital. The property has a lounge with an electric fireplace and a modern dining kitchen with plenty of storage. To the first floor there are three good sized bedrooms and a bathroom/WC with white suite & electric shower. Outside there is a lawned front/rear garden.

### TENANCY DETAILS

Available From: NOW

Furnishing: Unfurnished

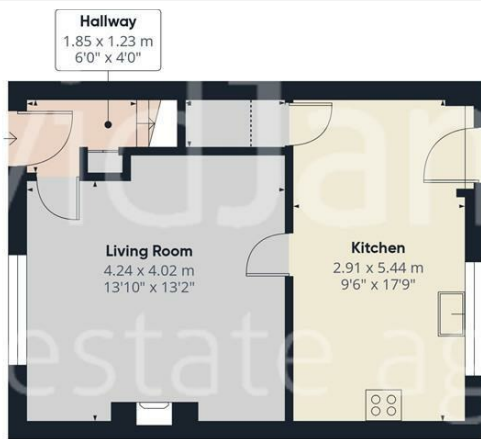
EPC Rating: C

Council Band: A

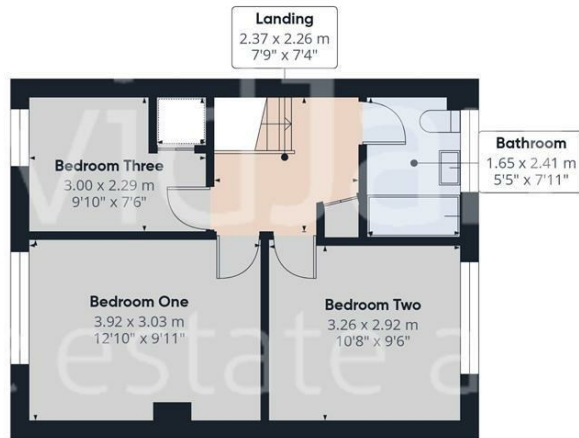
- A well presented end-terrace house
- Three good sized bedrooms
- Spacious lounge with electric fire
- Modern kitchen with ample units
- Bathroom/Wc with white suite & electric shower
- UPVC double glazed windows
- Gas central heating
- Lawned front garden
- Private rear garden with lawn area
- Within walking distance of Nottingham City Hospital







Floor 0



Floor 1



**Approximate total area<sup>(1)</sup>**  
73.7 m<sup>2</sup>  
793 ft<sup>2</sup>

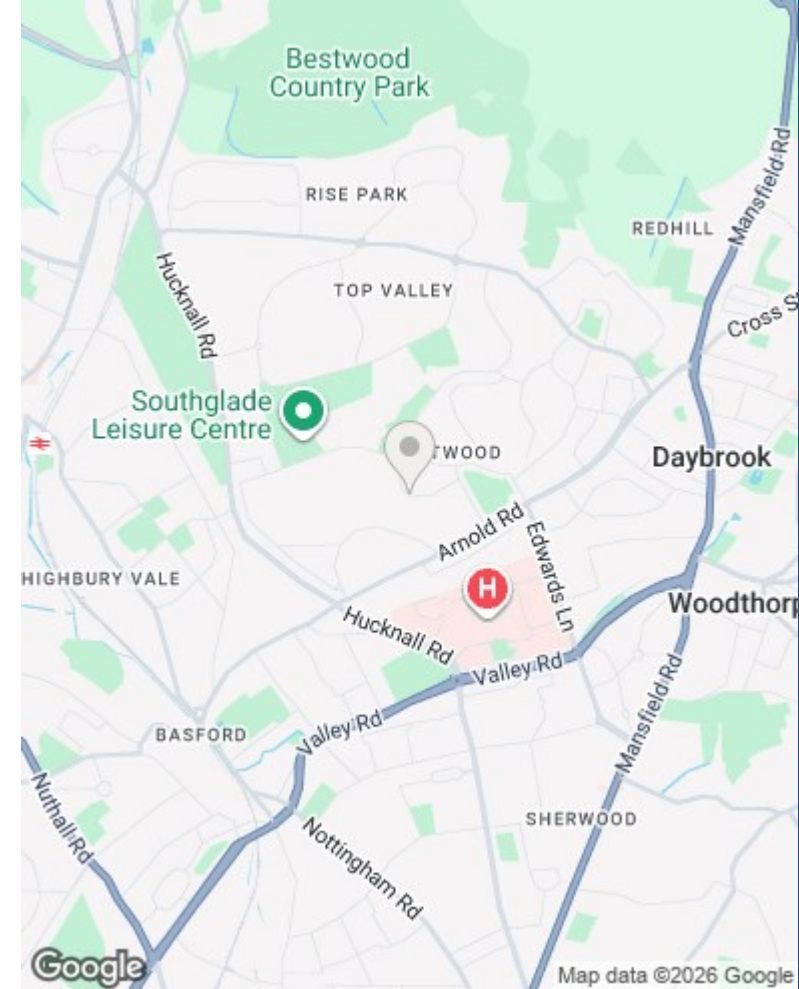
**Reduced headroom**  
0.9 m<sup>2</sup>  
9 ft<sup>2</sup>

(1) Excluding balconies and terraces

**Reduced headroom**  
----- Below 1.5 m/5 ft

Calculations reference the RICS IPMS 3C standard. Measurements are approximate and not to scale. This floor plan is intended for illustration only.

GIRAFFE360



These particulars are produced in good faith, are set out as a general guide only and do not constitute any part of a contract. No person in the employment of David James Estate Agents Ltd has any authority to make any representation whatsoever in relation to the property. All services, together with electrical fittings or fitted appliances have NOT been tested. All the measurements given in the details are approximate. Floor plans are for illustrative purposes only and are not drawn to scale. The position and size of doors, windows, appliances and other features are approximate only. The photographs of this property have been taken with a 10mm wide-angle lens. No responsibility can be accepted for any loss or expense incurred in viewing. If you have a property to sell you may wish to take advantage of our free valuation service. David James Estate Agents have established professional relationships with third-party suppliers for the provision of services to Clients. As remuneration for this professional relationship, the agent receives referral commission from the third-party company. David James Estate Agents receives the following commission from each third party supplier on a per referral basis: W A Barnes Ltd: £60 including VAT. All Moves UK Ltd: 18% including VAT of the invoice total (£107 including VAT average). MoveWithUs Limited: £188 including VAT (average).

**Council Tax Band: A  
Nottingham City**

**DavidJames**  
the estate agent

David James Estate Agents  
45b Plains Road, Mapperley, Nottingham, NG3 5JU  
t: 0115 962 4213 e: lettings@david-james.com

