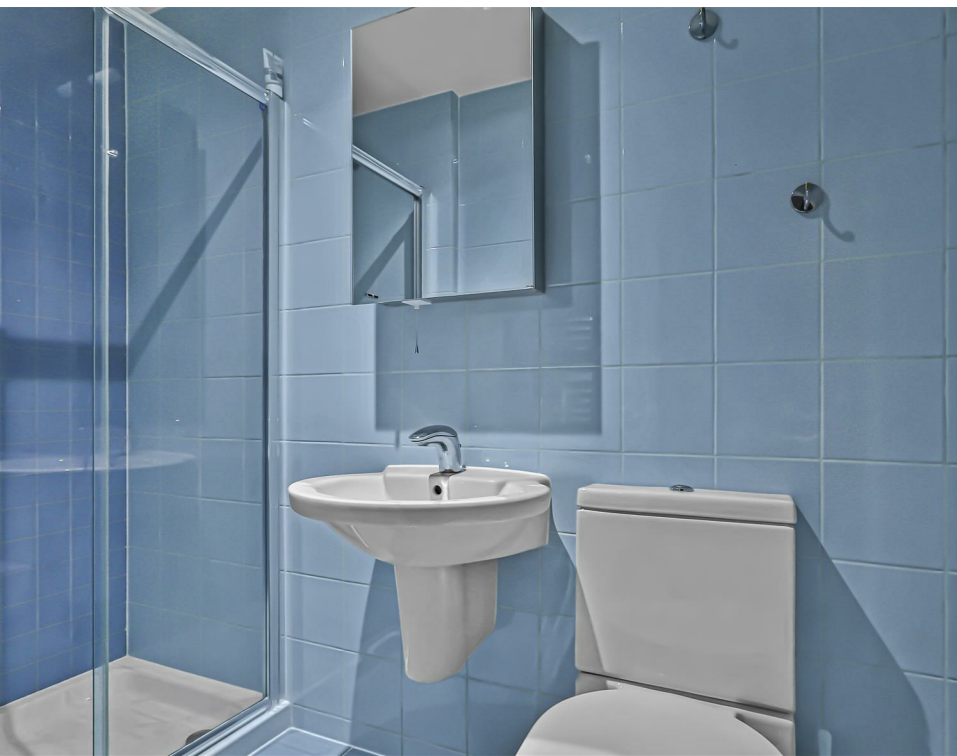




BANKS ROAD,
SANDBANKS











DETAILS

A spacious two double bedroom apartment on the famous Sandbanks Peninsula with far reaching harbour views.

Access is granted via a secure telephone entry system. Using the lift or leading up the rainbow-stained glass staircase you will reach the first floor which allows access to this exceptional home.

Ideal for a permanent home or lock up and leave the open plan kitchen/living space presents immaculately well. The kitchen which has recently been refurbished benefits from a range of floor to ceiling storage, superior appliances and natural stonework surfaces. The lounge area has plenty of space and can comfortably cater for friends and family. Wonderful harbour views are both on offer from the kitchen/living space.

The principle bedroom offers views towards the harbour and fitted wardrobes provide for plenty of storage. A well appointed en-suite shower room with walk in shower, basin, W/C and bespoke storage complete the principle bedroom.

Bedroom two is a light and bright double room ideal for guests. A built in wardrobe offers ample storage. A family bathroom with large walk in shower offers convenient facilities adjacent to bedroom two.

There is an allocated parking space with electric charging available and a secure gated entrance to the block making it ideal to lock-up-and-leave with confidence.

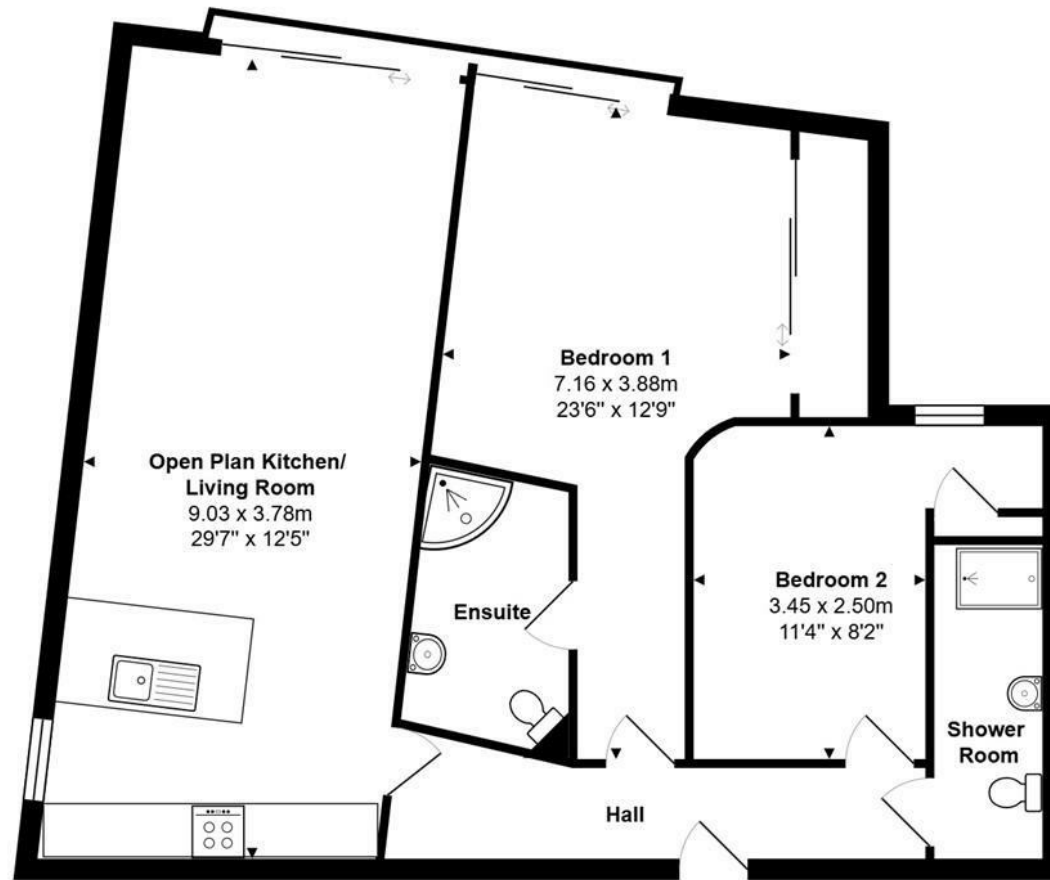
The location is perfect for relaxing holidays or full time living at any time of year being within easy walking distance of several local cafes and Rick Steins restaurant, the Blue Flag sandy beach at Sandbanks and the harbour with it's opportunities for sailing, windsurfing and paddle boarding.

AT A GLANCE

| | |
|----------------------|-------------------------------|
| Offers in excess of: | £500,000 |
| Tenure: | Leasehold - Share of Freehold |
| Stamp Duty: | £15,000 Main Home |
| Local Authority: | BCP Council |
| Council Tax: | £3,271.35 Band F |

KEY FEATURES

- Harbour views from living area and main bedroom
- Open-plan living and dining space
- Refurbished kitchen with stone worktops
- Principal bedroom with en-suite shower
- Second double bedroom with built-in storage
- Modern family shower room
- Secure allocated parking with EV charger
- Walking distance to Sandbanks beach and harbour
- First-floor position
- Secure entry system with lift



Total Area: 82.0 m² ... 883 ft²

All measurements are approximate and for display purposes only

LLOYDS

Important notice Lloyds Property Sales Ltd, its clients and any joint agents give notice that 1: They are not authorised to make or give any representations or warranties in relation to the property either here or elsewhere, either on their own behalf or on behalf of their client otherwise. They assume no responsibility for any statement that may be made in these particulars. These particulars do not form part of any offer or contract and must not be relied upon as statements or representations of fact. 2: Any areas, measurements or distances are approximate. The text, photographs, council tax charges, stamp duty charges and plans are for guidance only and are not necessarily comprehensive. It should not be assumed that the property has all necessary planning, building regulation or other consents and Lloyds Property Sales have not tested any services, equipment or facilities. Purchasers must satisfy themselves by inspection or otherwise.