



Jeffrey's Place

London, NW1

Guide Price £1,600,000

Nestled in the heart of Camden, this stunning three bedroom townhouse offers a wonderful blend of modern comfort and urban convenience. Having undergone a complete renovation in 2023 that included new windows, doors, West & Reid kitchen, new bathrooms; the home features a bright and airy reception with fantastic vaulted ceilings and a dining area adjacent to the kitchen. There is a charming patio/garden which provides a peaceful outdoor retreat, while the mezzanine-level adds a unique touch to the layout. Additional benefits include a small garage (perfect for a motorbike and other bulky items) and ample storage throughout. This home is perfect for those seeking stylish city living.

CHESTERTONS



Jeffrey's Place

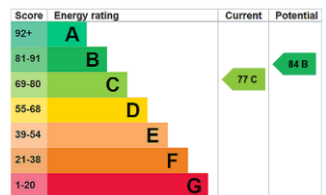
London, NW1

- Very well located
- Fantastic presentation
- Three bedrooms
- Two bathrooms
- Small Garage
- Garden and balcony



Jeffrey's Place is quietly nestled in a desirable conservation area with the excellent amenities of both Camden and Kentish Town in very close proximity. It is very light on traffic and is in the catchment area for Camden School for Girls. Ideally located near Camden's vibrant shops, cafés, and transport links. Kings Cross is also in close proximity. The green spaces of both Regent's Park and Hampstead are walkable, and the Rochester Terrace has a small playground and is popular with local dog owners.

Tenure: Freehold
Service Charge: £0
Ground Rent: £0
Local Authority: Camden
Council Tax Band: G

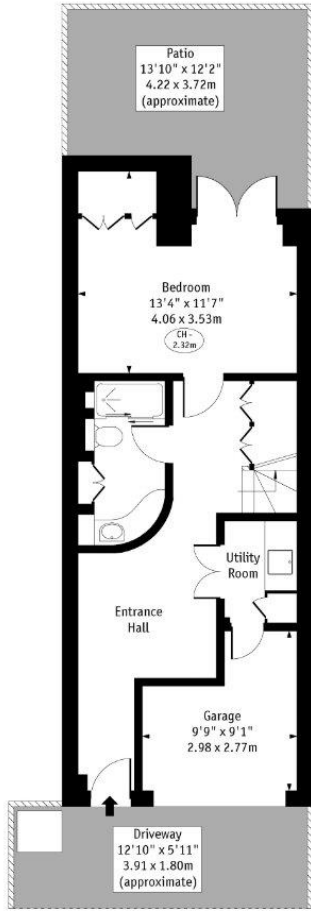


Chestertons Camden & Kentish Town Sales

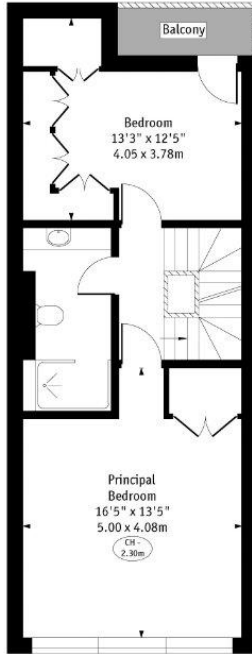
99-101 Parkway
 Camden
 London
 NW1 7PP
 camden@chestertons.co.uk
 020 7267 2053
 chestertons.co.uk

Jeffrey's Place

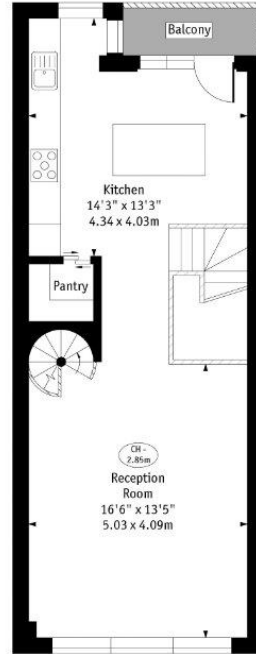
○ - Ceiling Height



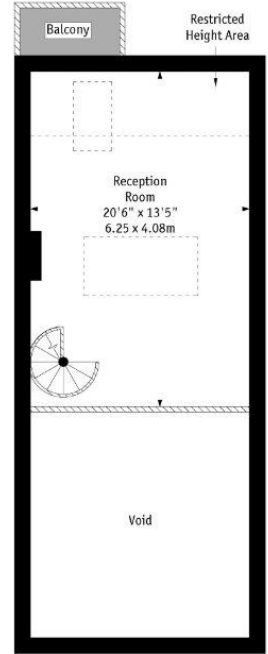
Ground Floor
480 Sq Ft - 44.59 Sq M



First Floor
480 Sq Ft - 44.59 Sq M



Second Floor
480 Sq Ft - 44.59 Sq M



Third Floor
274 Sq Ft - 25.50 Sq M

Approx Gross Internal Area 1714 Sq Ft - 159.27 Sq M
(Including Garage)

Approx. Floor Area Including Restricted Heights 2140 Sq Ft - 177.89 Sq M

Every attempt has been made to ensure the accuracy of the floor plan shown.
However, all measurements, fixtures, fittings, and data shown are approximate interpretations and for illustrative purposes only. Measured according to the RICS. Not To Scale.
www.goldlens.co.uk
Ref. No. 031284DH

