

Palace Street  
Westminster, SW1E

**Dexters**



### About the property

Located in the heart of Westminster, this elegant five storey Georgian home offers spacious accommodation with modern finishes and plenty of natural light throughout.

The property features a large principal bedroom with an en suite, four double bedrooms, bathroom and shower room, generous reception room with a balcony, separate dining room, modern kitchen with garden access, plus a study, utility area and vault.

Set within the Birdcage Walk Conservation Area, this impressive townhouse is close to Buckingham Palace and the open spaces of Green Park and St James's Park.

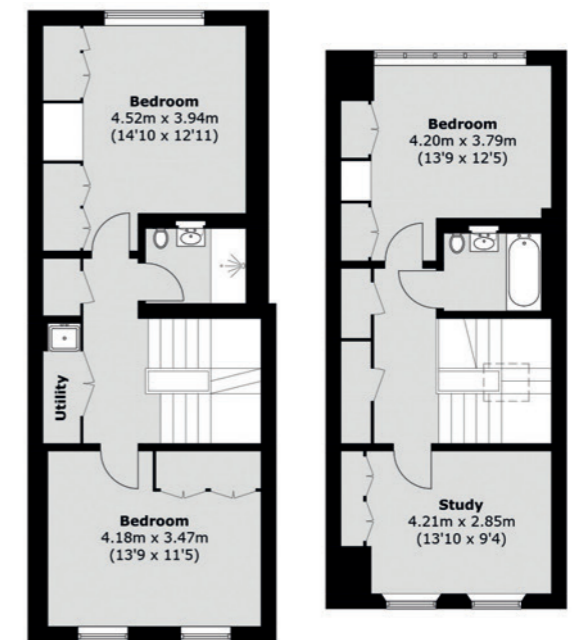
Excellent transport links include Victoria, Westminster and St James's Park stations, offering direct services to Gatwick Airport and connections across London.

### Key features

- Five Double Bedrooms
- Three Bathrooms
- Garden
- Balcony
- Sought After Location
- Vault







TOTAL AREA (APPROX.): 2,742.6 SQ. FT (254.8 SQ. M)  
 VAULT: 37.7 SQ. FT (3.5 SQ. M)  
 ROOF TERRACE: 51.7 SQ. FT (4.8 SQ. M)

Energy Rating: C. We aim to make our particulars both accurate and reliable. However they are not guaranteed; nor do they form part of an offer or contract. If you require clarification on any points then please contact us, especially if you're traveling some distance to view. Please note that appliances and heating systems have not been tested and therefore no warranties can be given as to their good working order.



Dexters Westminster  
50 Churton Street,  
London, SW1V 2LP  
020 7590 9570

**Dexters**