



Drayton Green Road, W13

£280,000

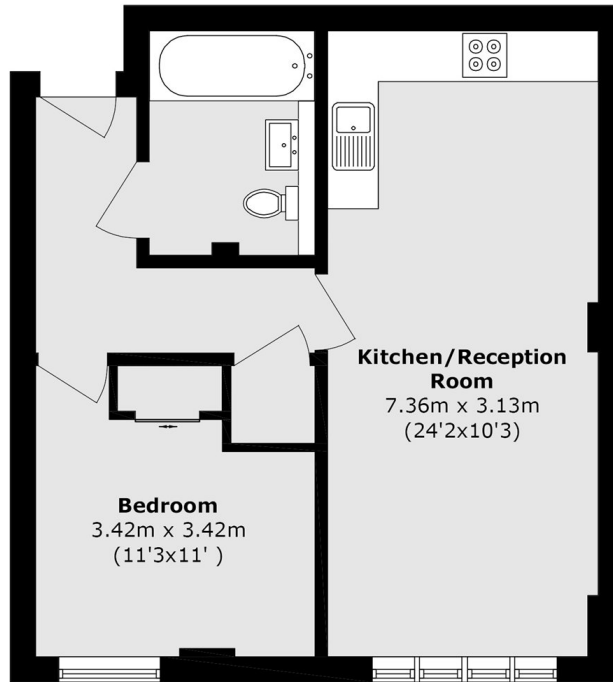
A well-presented one-bedroom purpose-built apartment set within a popular residential development. In excellent condition throughout, the property features a spacious open-plan kitchen/living area, a generous double bedroom, and a modern family bathroom. Further benefits include a long lease and secure gated allocated underground parking, making this an ideal first-time purchase or investment opportunity.

Ideally located moments from Waitrose and West Ealing's Elizabeth Line station, providing fast connections to Bond Street (approx. 24 minutes) and Canary Wharf (approx. 40 minutes), with Heathrow accessible in under 20 minutes in the opposite direction.

Features

- One Bedroom
- Open Plan Kitchen/Living
- Lift Access
- Close To Station
- Allocated Parking
- No Onward Chain

Drayton Green Road, London, W13



Total area (approx.): 47.7 sq. m (513.4 sq. ft)