



## **6 Pier House, Beaumaris, LL58 8BS**

**£320,000**

A modern three bedroom apartment situated on the second floor of this prominent building on Beaumaris sea front, situated almost directly opposite the Pier and enjoying far reaching views over the Menai Strait towards the Snowdonia mountains. Upgraded and modernised to a very good standard, the 3 bedroom accommodation has two en suites provided while both the living room and kitchen/dining room enjoy exceptional sea and mountain views. Having gas central heating and double glazed windows the apartment is well worthy of viewing and sold with no onward chain.

Public parking located very close by on the Green at concessionary rate of about £15 a year for residents.



### Communal Hall

With fire alarm and emergency lighting.

### Private Hallway



Having split level stairs with access to the front living accommodation and rear bedrooms. Radiator, entry phone system.

### Living Room 11'5" x 11'2" (3.49 x 3.41)



Having a front aspect window to give panoramic sea and mountain views over the nearby Pier. Radiator, tv point.

### Kitchen/Dining Room 11'5" x 11'2" (3.49 x 3.41)



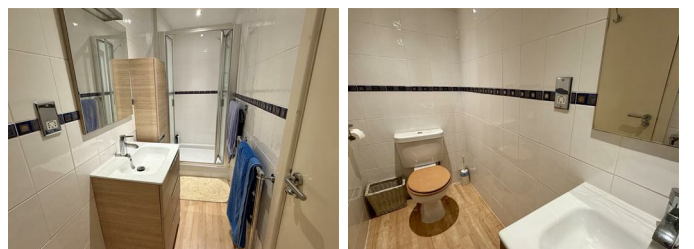
Again enjoying glorious sea and mountain views and having a good range of base and wall units in a laminated timber finish with contrasting worktop surfaces and tiled surround. Integrated ceramic hob with extractor over and oven under. Other integrated appliances include a fridge, separate freezer, dishwasher and washing machine. 1.5 bowl stainless steel sink unit, timber flooring, radiator, ceiling downlighters. Space for a dining table.

### Bedroom 1 13'1" x 12'2" (4.00 x 3.70)



Having a wide 5 door range of fitted wardrobes, radiator, telephone/Internet connection. Rear aspect window. Door to:

### En Suite Shower Room 13'0" x 3'5" (3.96 x 1.04)



Having fully tiled walls and a suite in white

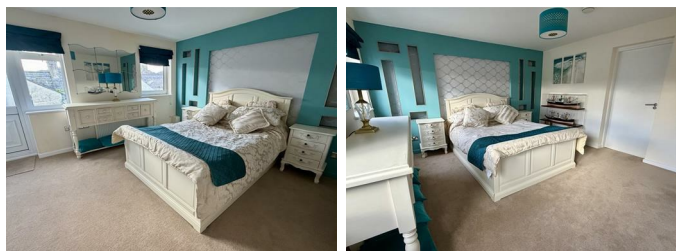
comprising of a good sized shower cubicle with Mira thermostatic shower control and glazed doors. Wash basin in a vanity unit and with mirror/light over and adjacent shaver point. WC, towel radiator

### Upper Landing



Having a spacious store cupboard housing a Worcester gas fired central heating boiler. Radiator.

### Bedroom 2 13'0" x 12'7" (3.95 x 3.84)



A naturally light room with two side aspect windows and double glazed door onto the fire escape. Spacious 5 door range of fitted wardrobes, radiator and tv point. Door to:

### En Suite Bathroom 10'4" x 6'4" (3.16 x 1.93)



Having a modern suite in white comprising of a timber panelled bath with mixer shower attachment and glazed shower screen. Wash basin with mirror light over and adjacent shaver point, WC. Towel radiator, fully tiled walls.

### Bedroom 3 12'9" x 5'8" (3.89 x 1.73)



With side aspect window and radiator.

### Tenure

Leasehold (150 year lease from 2005) with vacant possession. Ground rent £100.00 pa. Management fees that include building insurance, redecoration of exterior, cleaning, lighting and re decoration of communal areas, maintenance of fire and smoke alarms systems plus digital television aerial.

### Services

All mains services connected.  
Gas central heating.

### Council Tax

Band C.

### Energy Efficiency

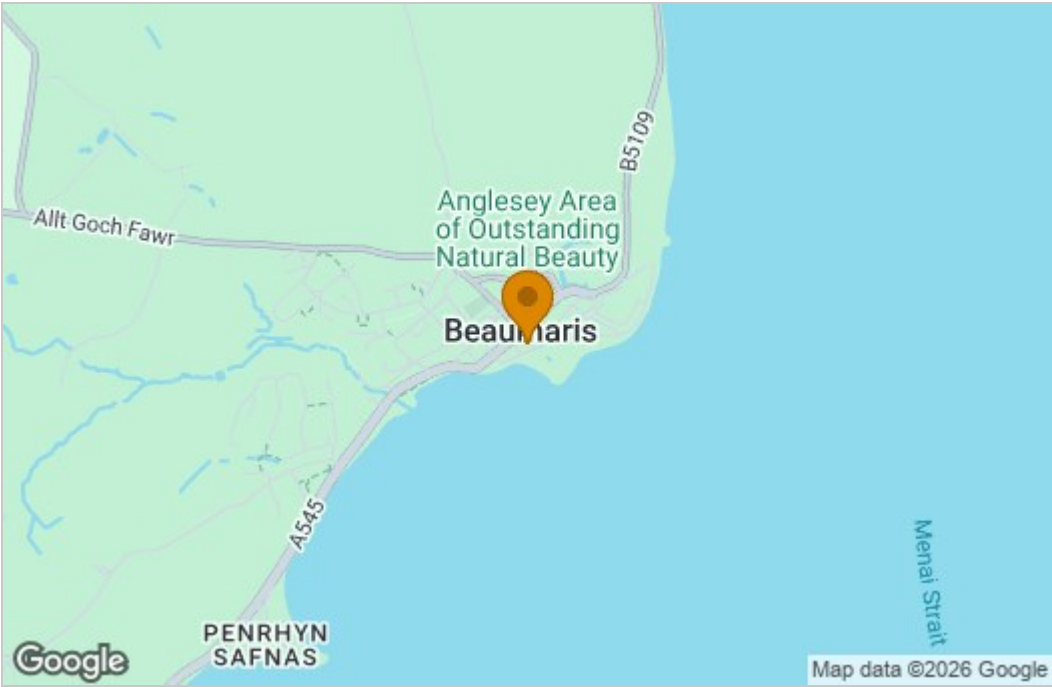
Band D.



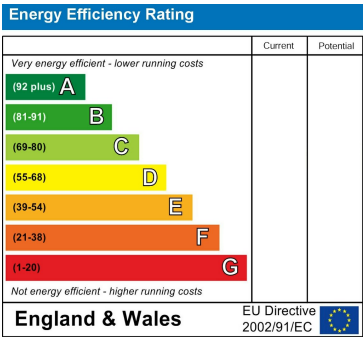
Floor Plan



Area Map



Energy Efficiency Graph



These particulars, whilst believed to be accurate are set out as a general outline only for guidance and do not constitute any part of an offer or contract. Intending purchasers should not rely on them as statements of representation of fact, but must satisfy themselves by inspection or otherwise as to their accuracy. No person in this firms employment has the authority to make or give any representation or warranty in respect of the property.