



Guide Price
£220,000

Freehold

3x  1x  2x 

**Osborne Terrace,
Margate, Kent, CT9**

OVER 60?

Secure this property
for up to **59% less!**

Wards
Helping you move forwards



Main features

- Excellent location and chain free
- Ideal for first time buyers
- Easy to maintain rear garden
- Off road parking
- Short distance to local hospital and shops

Accommodation

GROUND FLOOR

Hallway

Lounge: 13'11 x 13'2 (4.24m x 4.02m)

Kitchen: 16'3 x 8'7 (4.96m x 2.62m)

Dining Room used as a bedroom: 11'7 x 11'2 (3.53m x 3.41m)

FIRST FLOOR

Landing

Bathroom : 6'0 x 5'0 (1.83m x 1.53m)

Bedroom 1: 13'1 x 9'11 (3.99m x 3.02m)

Bedroom 2: 9'11 x 9'9 (3.02m x 2.97m)

Bedroom 3: 10'1 x 6'1 (3.08m x 1.86m)

OUTSIDE

Front Garden

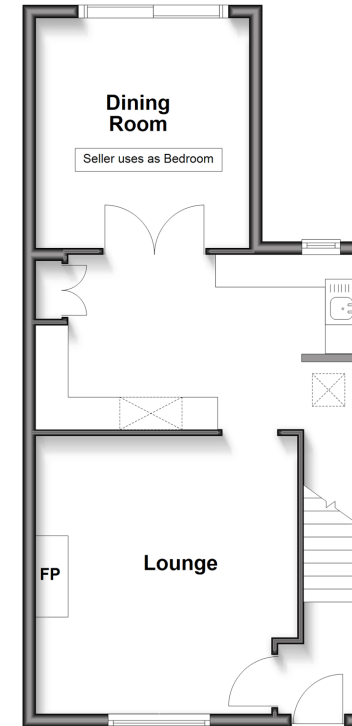
Off Road Parking

Rear Garden

Workshop/Outbuildings: 9'7 x 5'8 (2.92m x 1.73m)

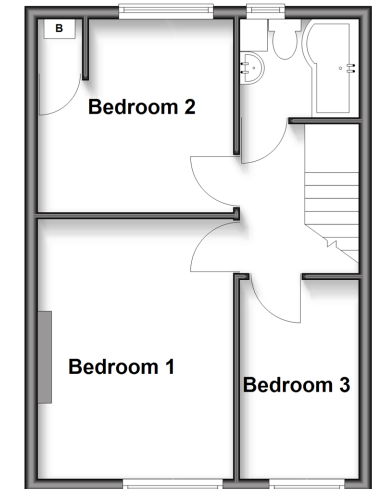
Ground Floor

Approx. 47.0 sq. metres (506.0 sq. feet)



First Floor

Approx. 35.1 sq. metres (377.9 sq. feet)



Unable to display material information. Please check with the branch for material information details for this property



15110102/20260424/KP/NF