



## White Cottage, Guisborough Road, Whitby

Guide Price **£249,950**

**Hendersons.**  
Estate & Letting Agents

White Cottage is a beautifully reimagined, corner terraced three-bedroom home, positioned on the outskirts of Whitby's vibrant town centre, offering the perfect balance of coastal convenience and village connectivity with Ruswarp and Sleights both within easy reach.

Having undergone a comprehensive refurbishment, the property now presents a turnkey opportunity, with a thoughtfully redesigned layout and a refined, contemporary finish throughout, ideal for buyers seeking style, comfort and practicality in equal measure.

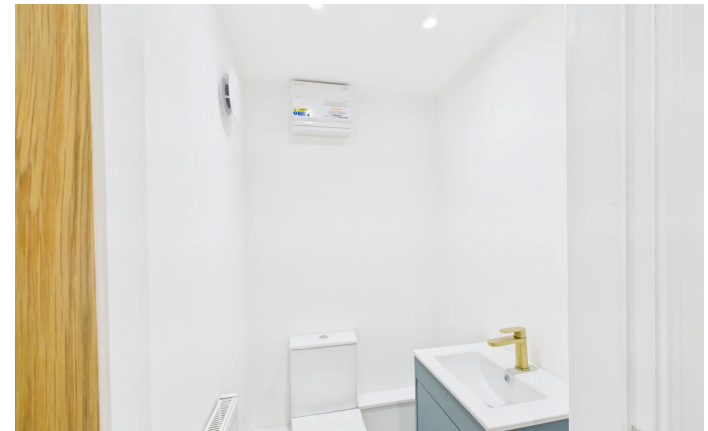
Stepping inside via the entrance porch, the ground floor opens into a light-filled and impeccably finished living space. At the heart of the home is the stunning kitchen, complete with elegant sage green cabinetry, quality work surfaces and integrated appliances, complemented by ample space for dining and entertaining. A separate utility room provides valuable additional storage and functionality, keeping the main living areas beautifully uncluttered.

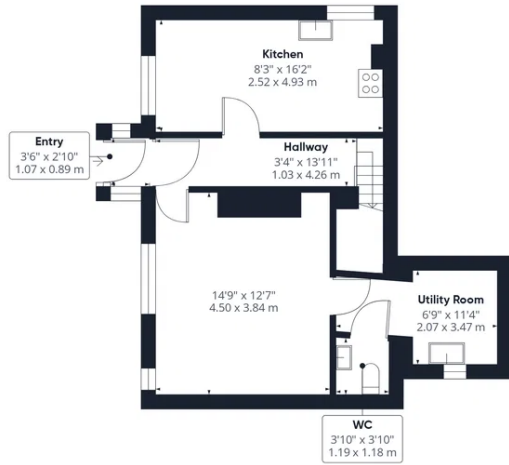
The lounge, overlooking the charming frontage, offers a warm and inviting retreat, tastefully styled to create a comfortable yet modern living environment. Completing the ground floor is a newly installed W.C., finished with sleek tiling and high-quality fittings, adding a further layer of convenience.

To the first floor, three well-proportioned bedrooms have all been freshly decorated in a clean, contemporary palette, offering flexible accommodation for families, professionals or those seeking additional workspace. The newly fitted bathroom is particularly impressive, featuring crisp white sanitaryware enhanced by striking brass fittings, creating a luxurious and on-trend finish.

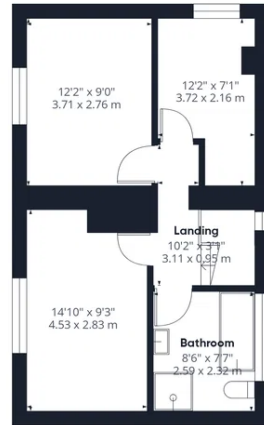
Externally, the property enjoys a low-maintenance front garden, enhancing its kerb appeal while providing a pleasant outlook. Further benefits include gas central heating and a location that offers easy access to Whitby town centre and local amenities.







Ground Floor



Floor 1

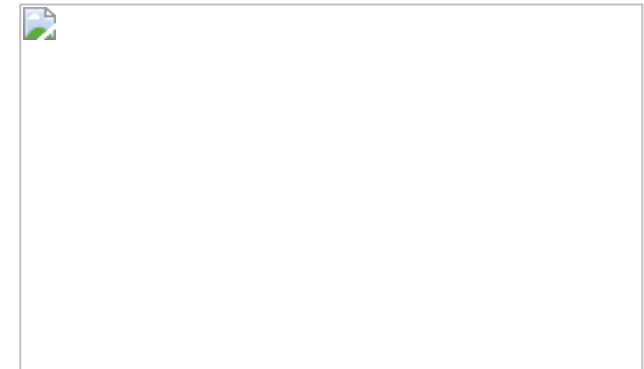


Approximate total area<sup>(1)</sup>  
888 ft<sup>2</sup>  
82.4 m<sup>2</sup>

(1) Excluding balconies and terraces

Calculations reference the RICS IPMS 3C standard. Measurements are approximate and not to scale. This floor plan is intended for illustration only.

GIRAFFE360



## Hendersons Estate Agents

22 - 23 Flowergate, Whitby, North Yorkshire YO21 3BA

T: 01947 602626

hello@myhendersons.co.uk

myhendersons.co.uk

# Hendersons.

Estate & Letting Agents