



FOR SALE

£230,000

5 Seaview Apartments 14-15 South Parade,
Southsea, PO5 2JP.

Tenure: Leasehold

ESTATE  AGENTS

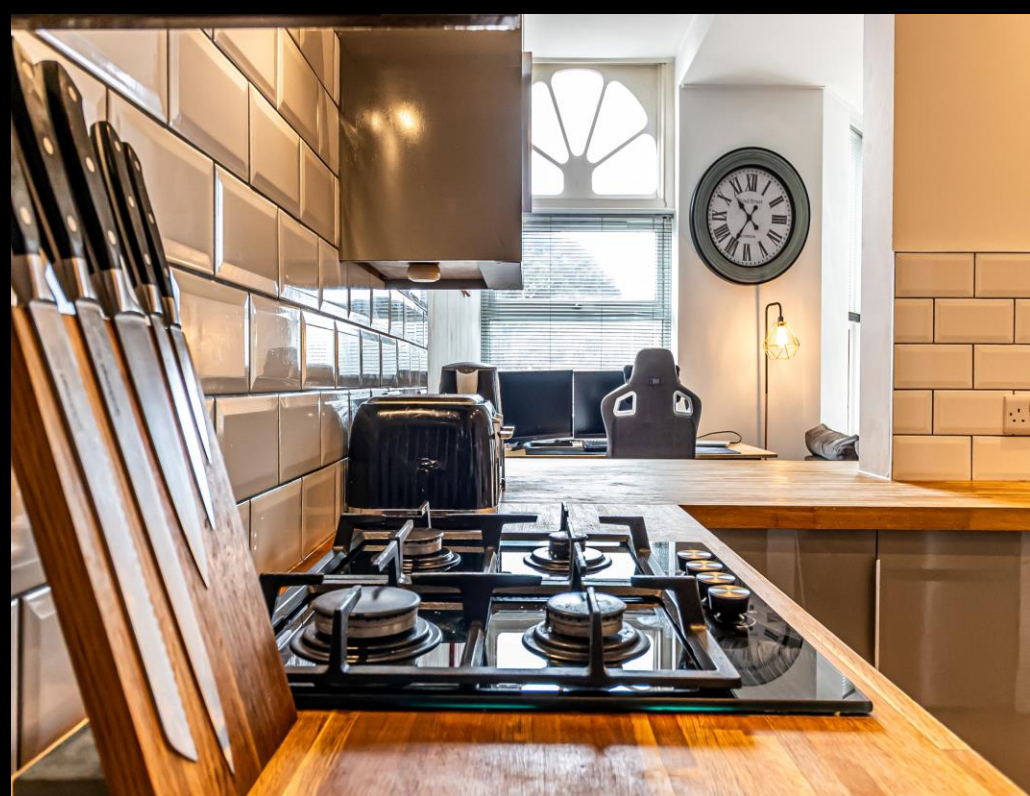
**LAWSON
ROSE**

PROPERTY DESCRIPTION

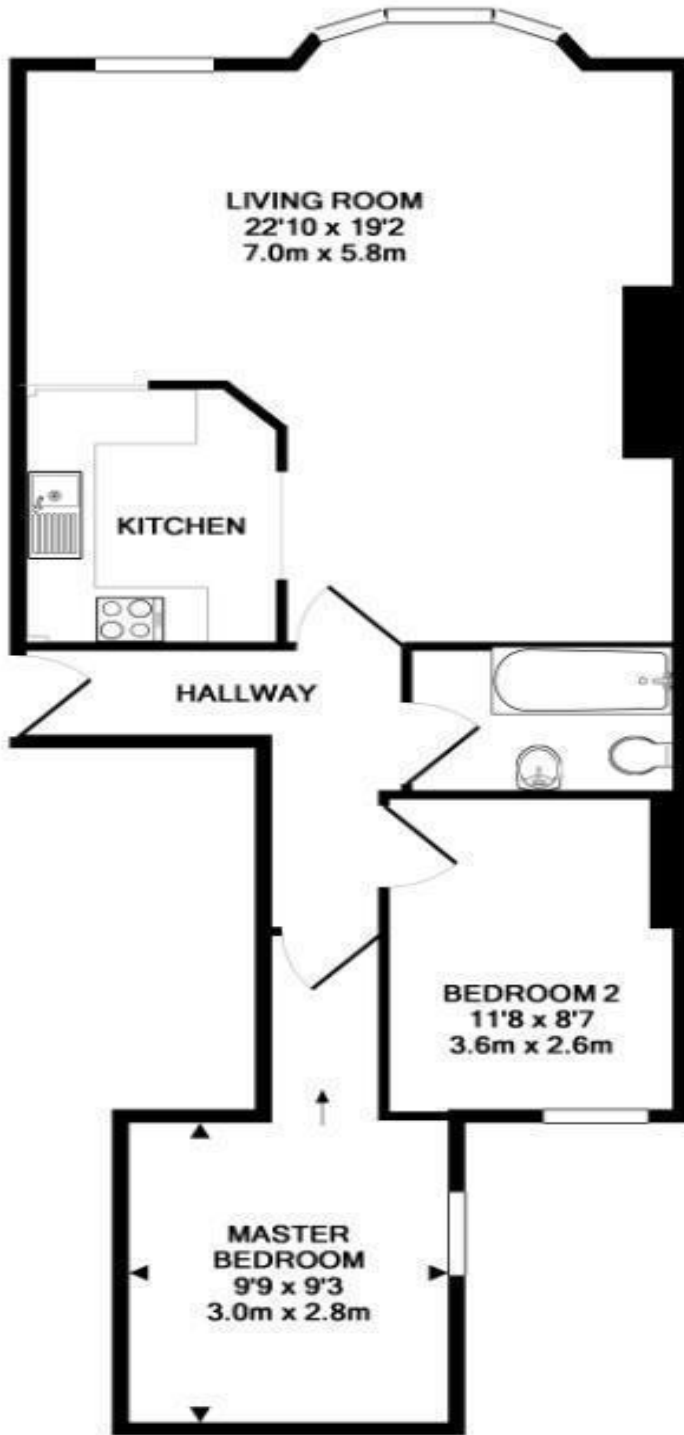
Central Seafront Location – Two-Bedroom Apartment This well-presented two-bedroom apartment is situated on the hall floor of Sea View Apartments, offering a prime seafront position with views over the communal grounds. The accommodation features a bright, open-plan lounge and dining area, ideal for relaxing or entertaining, with natural light and a welcoming atmosphere. The fitted kitchen is practical and well-laid out, complemented by a modern bathroom suite and two comfortable double bedrooms. The property benefits from double glazing and gas central heating throughout, making it both comfortable and energy-efficient. Located close to local shops, cafes, and the seafront promenade, this apartment offers an excellent opportunity to enjoy coastal living in a convenient, sought-after location. Internal viewings are highly recommended and can be arranged by contacting the team at Lawson Rose.

Material Information:

- Construction: Brick Built
- Electricity Supply: Alternating Current
- Heating: Gas Central Heating
- Water Supply: Mains Water Supply
- Sewage: Mains Sewage
- Broadband: Standard, Superfast Fibre and Gfast Fibre are available.
- Mobile: Ofcom Checker shows EE, Three, O2 and Vodafone all have voice and data availability in this area.
- Permit Parking: 1st permit is £30, 2nd permit is £120 and 3rd permit (where available) is £300.
- Council Tax: Portsmouth City Council – Band C
- Flood Risk – Low Risk (Stated on the Gov.uk portal)
- Tenure – Leasehold
- Date of Original Lease: 22 Aug 2002
- Term: 125 years from 1 July 2002 – 101 Years
- Management Company: GD3
- Service Charge: Service charge for period 01 Jan 26 to 31 Jul 26 - £828.45 + Reserve fund for period 01 Jan 26 to 31 Jul 26 - £ 62.50 = £890.95
- Ground Rent: £125 P/A







Score	Energy rating	Current	Potential
92+	A		
81-91	B		82 B
69-80	C	73 C	
55-68	D		
39-54	E		
21-38	F		
1-20	G		

Please note that none of the services or appliances have been tested by Lawson Rose Estate Agents.