



VILLAGE ESTATES



• EST.1993 •

93 Main Road, Sidcup, Kent DA14 6ND

Tel: 0208 302 1002

www.village-estates.com

Email: sidcup@village-estates.com



NO ONWARD CHAIN
THREE BEDROOMS
SEPERATE DINING ROOM

IN NEED OF MODERNISATION
SOUGHT AFTER LOACTION
HUGE POTENTIAL



27 Woodside Crescent
Sidcup, DA15 7JJ

£400,000

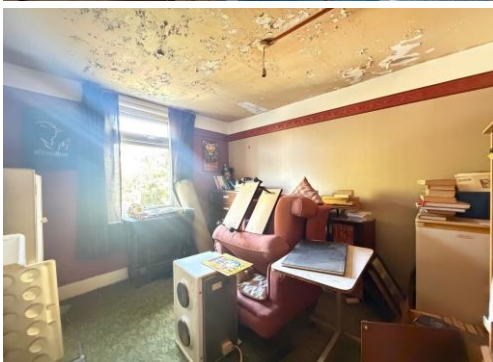
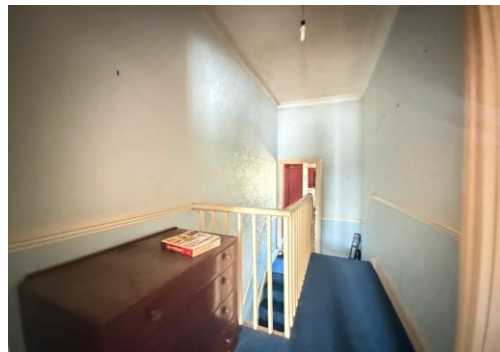
IN NEED OF FULL REFURBISHMENT this **THREE BEDROOM SEMI DETACHED HOME** is offered with **NO FORWARD CHAIN**. This Victorian terrace retains some **PERIOD FEATURES**, potential for off street parking (STPP) and private rear garden offering great potential to improve. Located in central Sidcup within excellent school catchment your early viewing is recommended.

EPC RATING: TBC

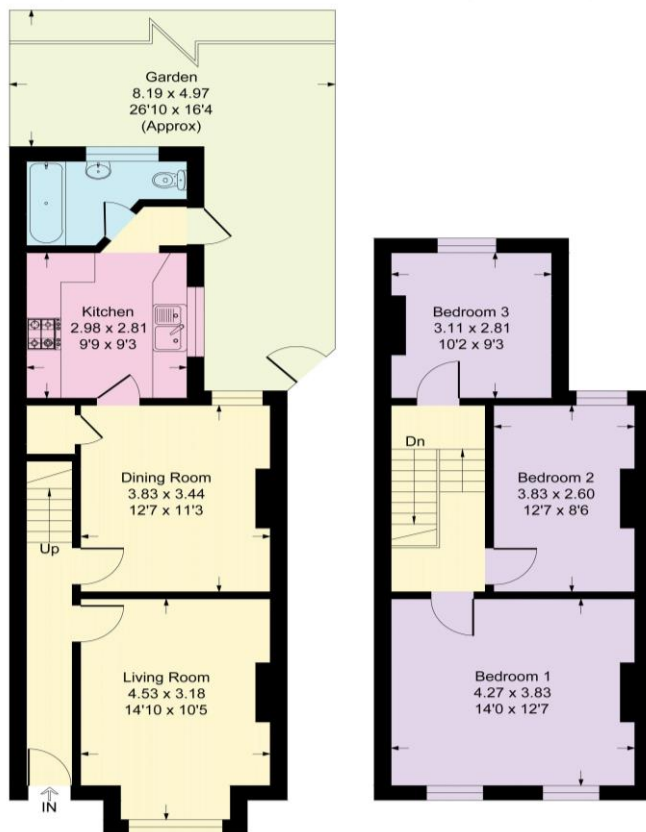
COUNCIL TAX BAND: D

TENURE: Freehold

LEASE TERM: Not Applicable



Approximate Gross Internal Area = 90.9 sq m / 979 sq ft



CONSUMER PROTECTION FROM UNFAIR TRADING REGULATIONS 2008

Please note that any services, heating system or appliances have not been tested, and no warranty can be given or implied as to their working order. You are advised to obtain verification from your solicitor or surveyor. References to the tenure of a property are based on information supplied by the seller. We have not had sight of the title documents and a buyer is advised to obtain verification from their solicitor. Items shown in photographs are not included unless specifically mentioned within the sales particulars, but may be available by separate negotiation. Whilst every attempt has been made to ensure the accuracy of the floor plan contained here, measurements of doors, windows, rooms and any other items are approximate and no responsibility is taken for any error, omission, or mis-statement. We advise you to book an appointment to view before embarking on any journey to see a property, and check its availability. The accuracy of these details are not guaranteed and they do not form part of the contract.