



48, Ashbourne Gardens, Hertford
SG13 8BQ
Guide Price £895,000



stevenoates.com



48 Ashbourne Gardens, Hertford, Herts, SG13 8BQ

A 4 bedroom modern townhouse offering spacious accommodation over three floors, located within this exclusive gated development on Hertford's sought after southside. The accommodation comprises of a spacious entrance hall with downstairs wc, integral garage, kitchen/diner and conservatory on the ground floor. On the first floor, there is a large living room and the main bedroom with a replaced en-suite shower room. On the second floor, there are 3 further good size bedrooms, a replaced en-suite shower room to one bedroom and a family bathroom. Externally, there is driveway parking and the rear garden is predominantly lawned adjoining mature trees to the rear.

Ashbourne Gardens is a small gated development located on the highly sought after south side of Hertford offering convenient access to Hertford's favoured SG13 schooling including Simon Balle, Richard Hale and Abel Smith. Hertford town centre is also only 0.5 miles away and provides an excellent choice of shops, restaurants and coffee shops. Both Hertford North & East train stations are closeby providing a choice of fast services to London.



70 Fore Street, Hertford, Hertfordshire, SG14 1BY



70 Fore Street, Hertford, Hertfordshire, SG14 1BY



70 Fore Street, Hertford, Hertfordshire, SG14 1BY

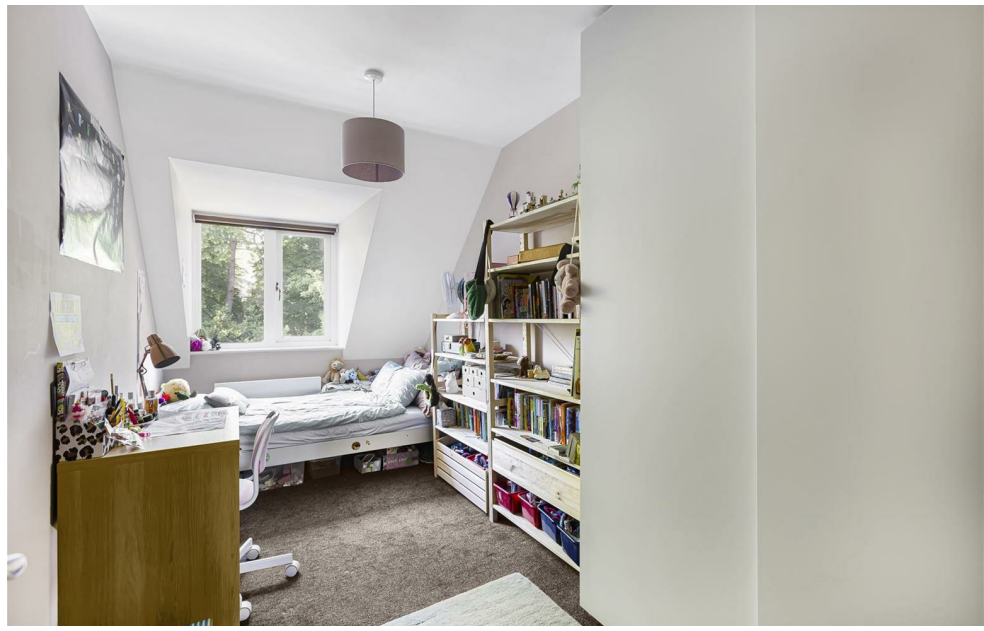




70 Fore Street, Hertford, Hertfordshire, SG14 1BY



70 Fore Street, Hertford, Hertfordshire, SG14 1BY



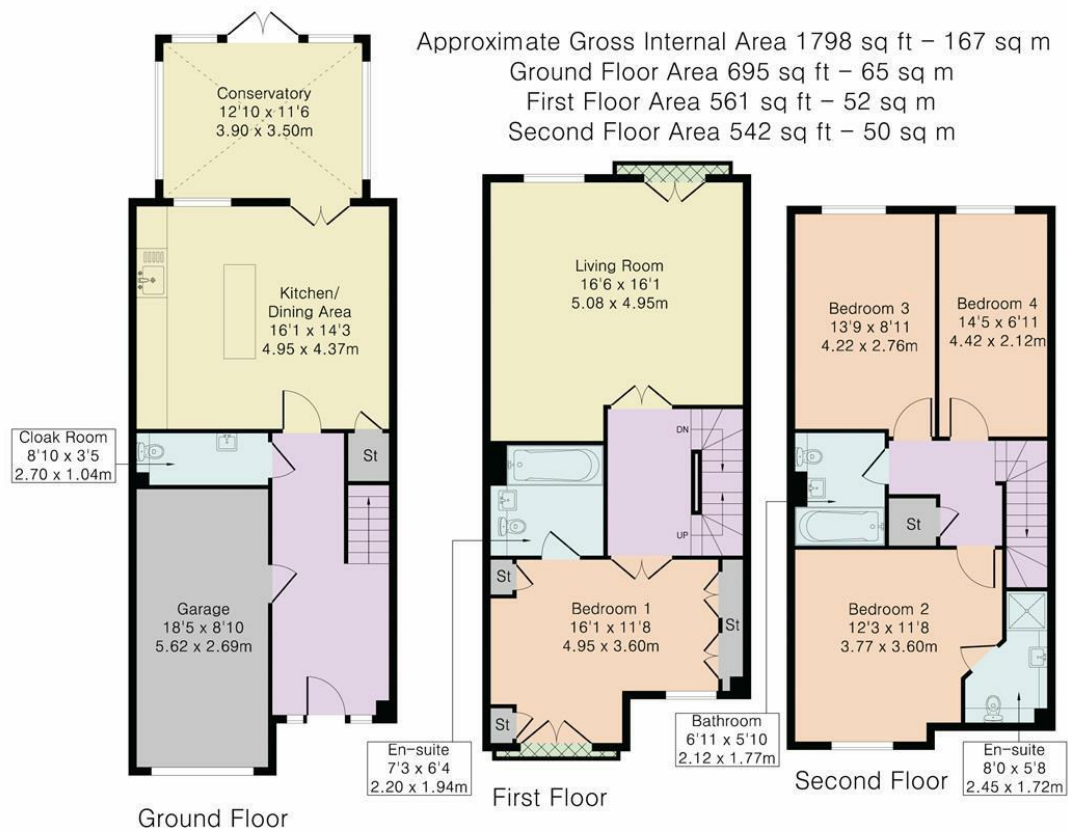
70 Fore Street, Hertford, Hertfordshire, SG14 1BY



70 Fore Street, Hertford, Hertfordshire, SG14 1BY



70 Fore Street, Hertford, Hertfordshire, SG14 1BY



Although Pink Plan Ltd ensures the highest level of accuracy, measurements of doors, windows and rooms are approximate and no responsibility is taken for error, omission or misstatement. These plans are for representation purposes only as defined by RICS code of measuring practise. No guarantee is given on total square footage of the property within this plan. The figure icon is for initial guidance only and should not be relied on as a basis of valuation.



These particulars, whilst believed to be accurate are set out as a general outline only for guidance and do not constitute any part of an offer or contract. Intending purchasers should not rely on them as statements of representation of fact, but must satisfy themselves by inspection or otherwise as to their accuracy. No person in this firms employment has the authority to make or give any representation or warranty in respect of the property.



stevenoates.com