



John Street, WC1N

£1,100,000

Dexters



John Street, WC1N

A two double bedroom apartment within a beautifully converted Georgian townhouse on one of Bloomsbury's best streets. The property comes with two bathrooms, an open-plan fully integrated kitchen, floor to ceiling rear facing windows and bike storage.

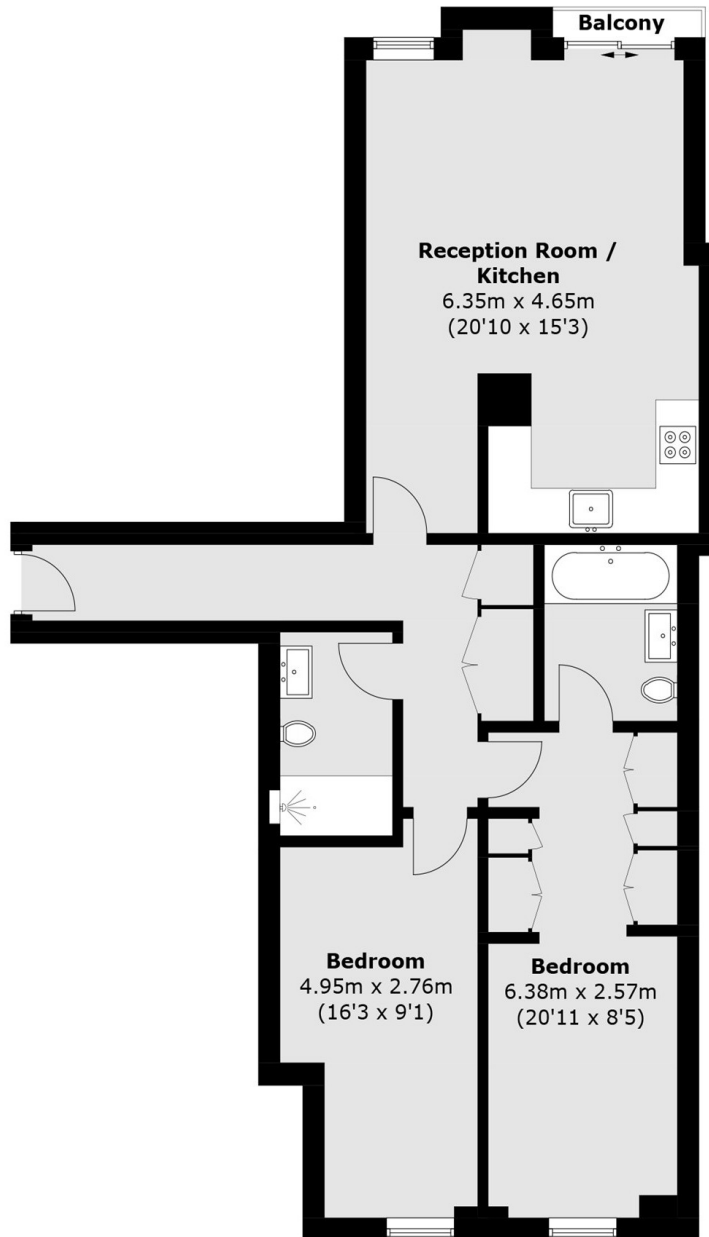
Situated in one of the most fashionable residential areas in central London, close by to Covent Garden and Farringdon Crossrail, the property is minutes from quiet garden squares and boutique shops, bars and restaurants on Lambs Conduit Street.

Features

- Two Double Bedrooms
- Two Bathrooms
- Lift Access
- Juliette Balcony
- Share Of Freehold
- No Onward Chain



John Street, LONDON, WC1N



Total area (approx.): 82.3 sq. m (885.9 sq. ft)
Balcony: 0.7 sq. m (7.5 sq. ft)