

Monton Office

0161 789 8383
222 Monton Road, Monton
M30 9LJ
@homeinmonton



57 Granite Court Longfield Centre Prestwich M25 1GW £950 Per month

TOWN CENTRE LOCATION! HOME ESTATE AGENTS are pleased to offer to let this fourth floor one bedroom flat situated in the heart of Prestwich Village. The property comprises open plan lounge with Balcony overlooking the communal gardens, one double bedroom, fitted kitchen area & three piece shower room. The property is uPVC double glazed. Ideally placed for the ever growing amenities of the area, transport links including the Metrolink on your doorstep. Offered on a part furnished basis, available from July. To book your viewing call the team at HOME on 01617898383.

- PRESTWICH VILLAGE LOCATION
- One Double Bedroom
- Lounge with Balcony overlooking the Communal Gardens
- Modern Fitted Kitchen
- Modern 3 piece Shower Suite
- UPVC double glazing
- Electric Heating
- Part Furnished
- Close to Metrolink / Transport Links
- POPULAR RESIDENTIAL LOCATION



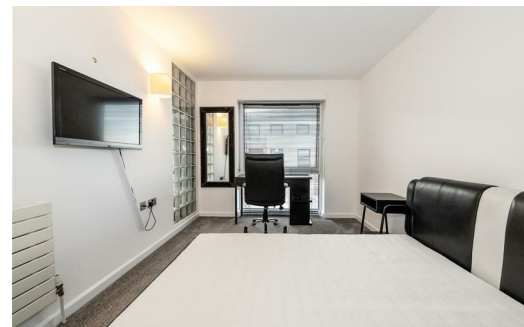
LOCAL EXPERTS THAT GET YOU MOVING

 www.homeestateagents.com

TENANCY INFO

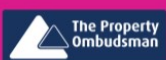
Bury Council Tax Band B - £1987.34

EPC Rating - C



LOCAL EXPERTS THAT GET YOU MOVING

 www.homestateagents.com



Registered Address Vantage House, East Terrace Business Park, Euxton Lane, Euxton PR7 6TB - England
Company Registration numbers Monton - 9262084 Urmston - 04331861 Stretford - 08259553

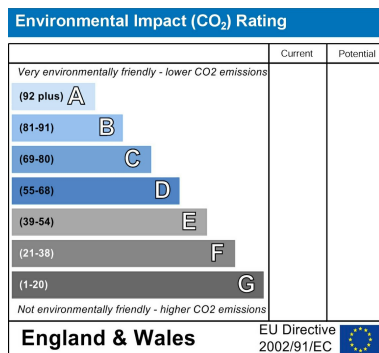
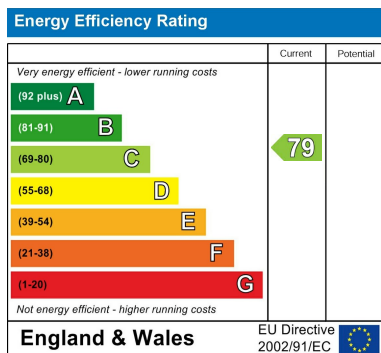


LOCAL EXPERTS THAT GET YOU MOVING

 www.homeestateagents.com



Registered Address Vantage House, East Terrace Business Park, Euxton Lane, Euxton PR7 6TB - England
Company Registration numbers Monton - 9262084 Urmston - 04331861 Stretford - 08259553



LOCAL EXPERTS THAT GET YOU MOVING

 www.homestateagents.com



Registered Address Vantage House, East Terrace Business Park, Euxton Lane, Euxton PR7 6TB - England
 Company Registration numbers Monton - 9262084 Urmston - 04331861 Stretford - 08259553