

## Cumberland Park, W3

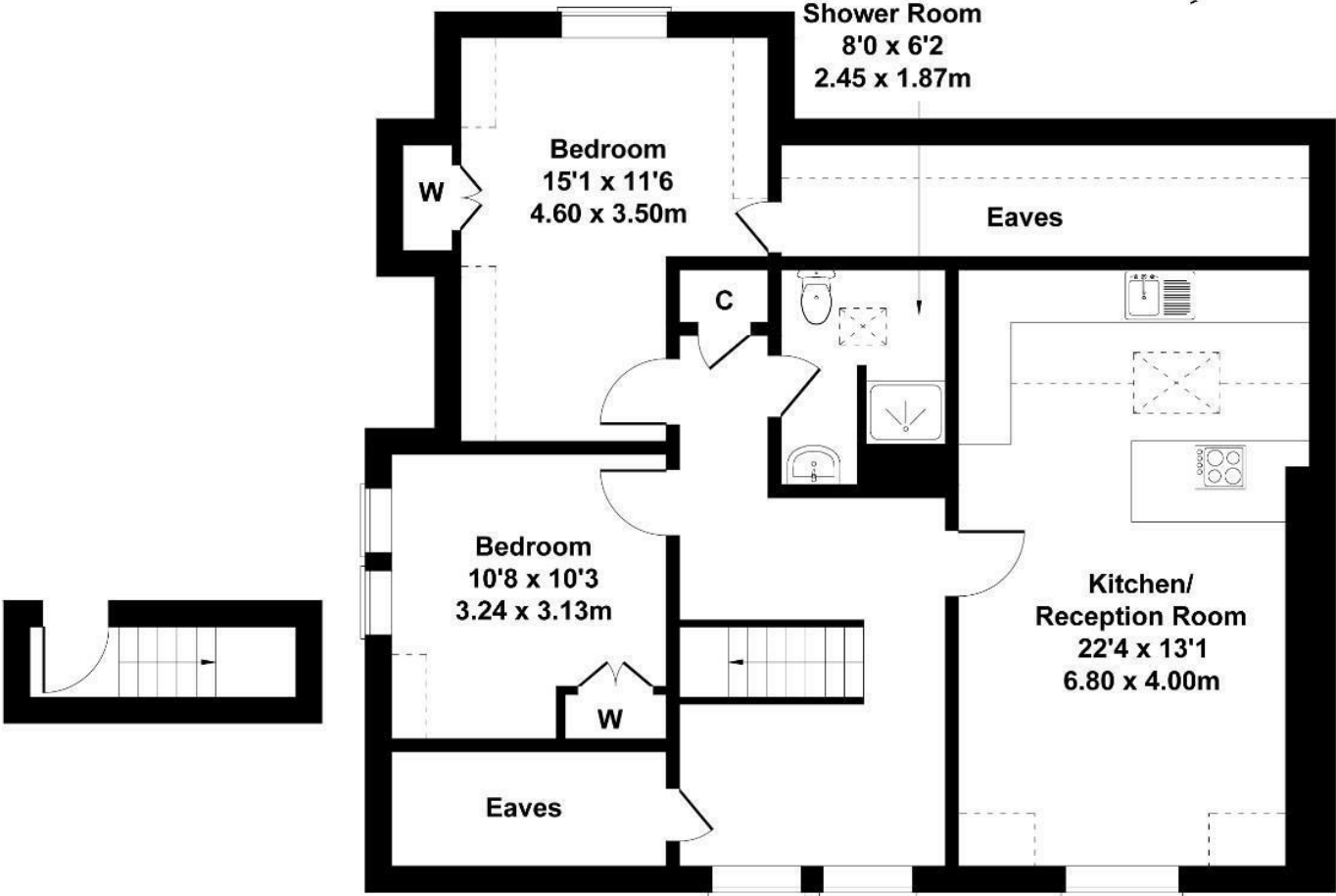
LONG LET: A bright and spacious two-bedroom new build apartment with a study, set over the top floor of a modern development on Cumberland Park.

- Two double bedrooms
- Separate study area
- Available 1st July 2026
- Open-plan living
- Permit parking available
- Near Elizabeth Line & Overground

£2,800 Per Month

# Cumberland Park

Approximate Gross Internal Area  
 818 sq ft - 76 sq m  
 (Excluding Eaves)



FIRST FLOOR

SECOND FLOOR

Not to Scale. Produced by The Plan Portal 2025  
**For Illustrative Purposes Only.**

Energy Efficiency Rating		
	Current	Potential
<i>Very energy efficient - lower running costs</i>		
(92 plus) <b>A</b>		
(81-91) <b>B</b>		
(69-80) <b>C</b>		
(55-68) <b>D</b>		
(39-54) <b>E</b>		
(21-38) <b>F</b>		
(1-20) <b>G</b>		
<i>Not energy efficient - higher running costs</i>		
<b>England &amp; Wales</b>	EU Directive 2002/91/EC	