



Carisbrooke Road, Rochester, ME2 3SN  
Guide price £600,000 Freehold

 4
  3
  2
  D



This lovely executive detached home offers a wonderful mix of space and contemporary living. Its located in a very popular residential area on the edge of Strood, close to the fields and A289 link road for the A2 and London.

The Rochester and Strood areas offers a great selection of restaurants, pubs and a cinema, along with all the shops and services expected of a major town including the mainline train stations for services to London and the Coast.

The property's benefits include: a modern fitted kitchen/diner with integrated and built in appliances, separate lounge, office, four double bedrooms, two en-suites and family bathroom, large utility, rear garden with side access, driveway and gym/office to rear with air conditioning.

#### **Entrance hall**

#### **Lounge**

20'0 x 12'8 (6.10m x 3.86m)

#### **Kitchen/diner**

28'6 x 12'5 (8.69m x 3.78m)

#### **Office**

15'7 x 8'8 (4.75m x 2.64m)

#### **Utility**

11'3 x 7'7 at widest (3.43m x 2.31m at widest)

#### **Cloakroom/WC**

#### **Landing**

#### **Master bedroom**

15'8 x 10'5 (4.78m x 3.18m)

#### **En-suite**

9'4 x 8'1 (2.84m x 2.46m)

#### **Bedroom two**

12'10 x 11'1 at widest (3.91m x 3.38m at widest)

#### **En suite**

#### **Bedroom three**

10'2 x 8'10 (3.10m x 2.69m)

#### **Bedroom four**

8'10 x 8'10 (2.69m x 2.69m)

#### **Bathroom**

7'10 x 5'7 (2.39m x 1.70m)

#### **Rear garden**

#### **Gym/office**

18'0 x 10'10 (5.49m x 3.30m)

#### **Tenure: FREEHOLD**

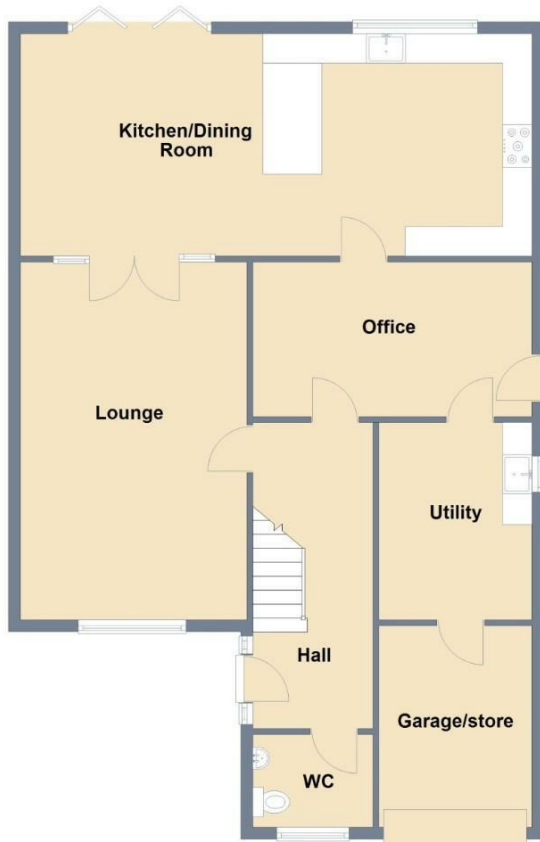
#### **Council tax: Band E**







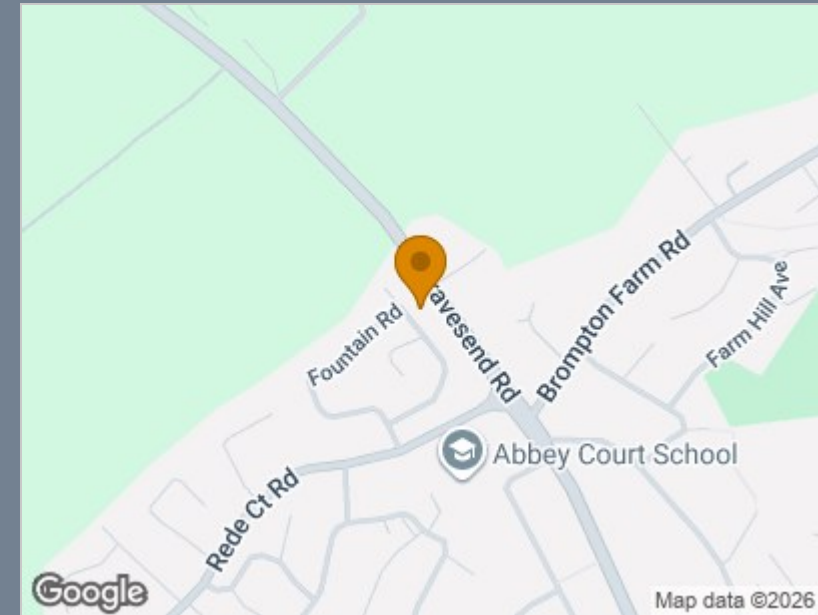
Ground Floor



First Floor



Total area: approx. 172.6 sq. metres (1857.9 sq. feet)



Energy Efficiency Rating		
	Current	Potential
Very energy efficient - lower running costs		
(92 plus) <b>A</b>		
(81-91) <b>B</b>		
(69-80) <b>C</b>		75
(55-68) <b>D</b>	56	
(39-54) <b>E</b>		
(21-38) <b>F</b>		
(1-20) <b>G</b>		
Not energy efficient - higher running costs		
<b>England &amp; Wales</b>	EU Directive 2002/91/EC	

## Viewing

Please contact The Homes Group Office on 01322 875000 if you wish to arrange a viewing appointment for this property or require further information.

These particulars, whilst believed to be accurate are set out as a general outline only for guidance and do not constitute any part of an offer or contract. Intending purchasers should not rely on them as statements of representation of fact, but must satisfy themselves by inspection or otherwise as to their accuracy. No person in this firm's employment has the authority to make or give any representation or warranty in respect of the property.