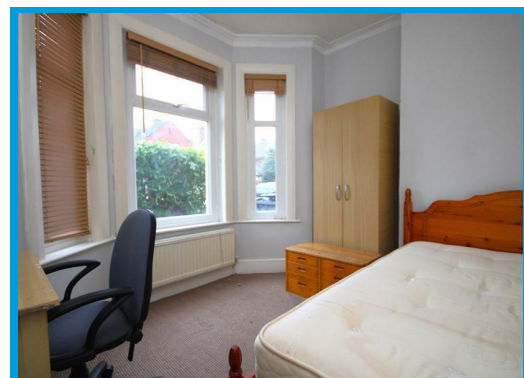
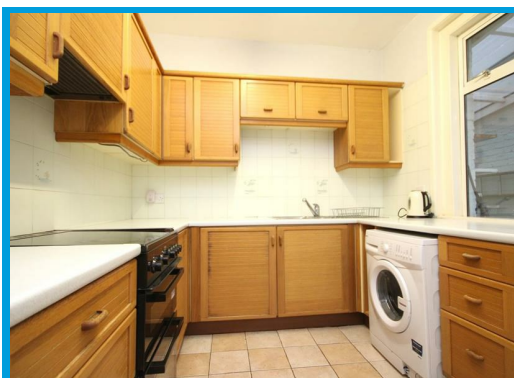
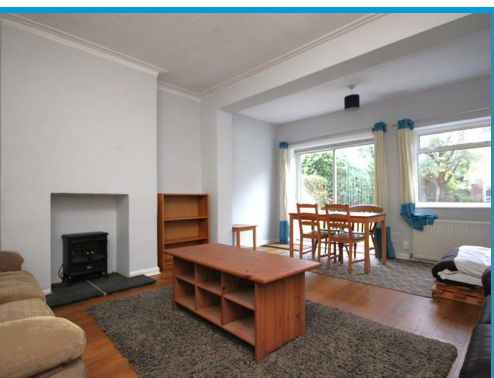




Deerbarn Road, Guildford Surrey, GU2 8AT

£2,750 PCM

**** STUDENT ACCOMODATION 2026-2027 ACADEMIC YEAR**** CLOSE TO SURREY UNIVERSITY- An exceptionally spacious and well presented four bedroom house located within a quiet Cul De Sac within moments of Guildford town centre & Surrey University.



Description

CLOSE TO SURREY UNIVERSITY- SPACIOUS AND WELL PRESENTED

This spacious four bedroom house has been recently upgraded and the ground floor comprises an entrance hall leading to a large lounge/ dining room, a kitchen with appliances, a dining room/ bedroom four and a utility/ storage room.

Upstairs there are three further bedrooms and a recently fitted bathroom with shower.

The property further features a pretty garden and has easy A3 and town centre access.

Ideal for STUDENTS & SHARERS

