



Apartment 503, Beecham House, Clayponds Lane,

Guide Price £290,000

RICHARD AVES

exp<sup>®</sup> UK

@ richard.aves@exp.uk.com

richardaves.exp.uk.com

07407 235 741

## Apartment 503, Beecham House, Clayponds Lane,

Quote RA1223 for all enquiries

Richard Aves Property powered by exp is delighted to offer this impressive top-floor, executive-style apartment in the popular GWQ development. This well-presented, 1 bedroomed apartment features neutral decor throughout and boasts an open plan lounge and kitchen with built-in appliances, including a dishwasher, oven, and fridge (All recently upgraded). A separate family bathroom completes the accommodation. It also includes a separate utility room with a washer/dryer, and valuable storage. The apartment has access to the private residents gym, a communal garden and has an allowed private, secure underground car parking space.





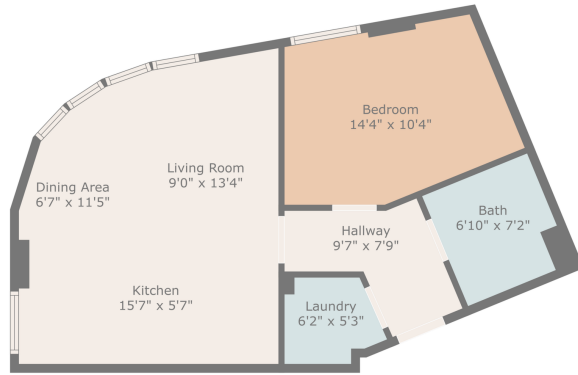






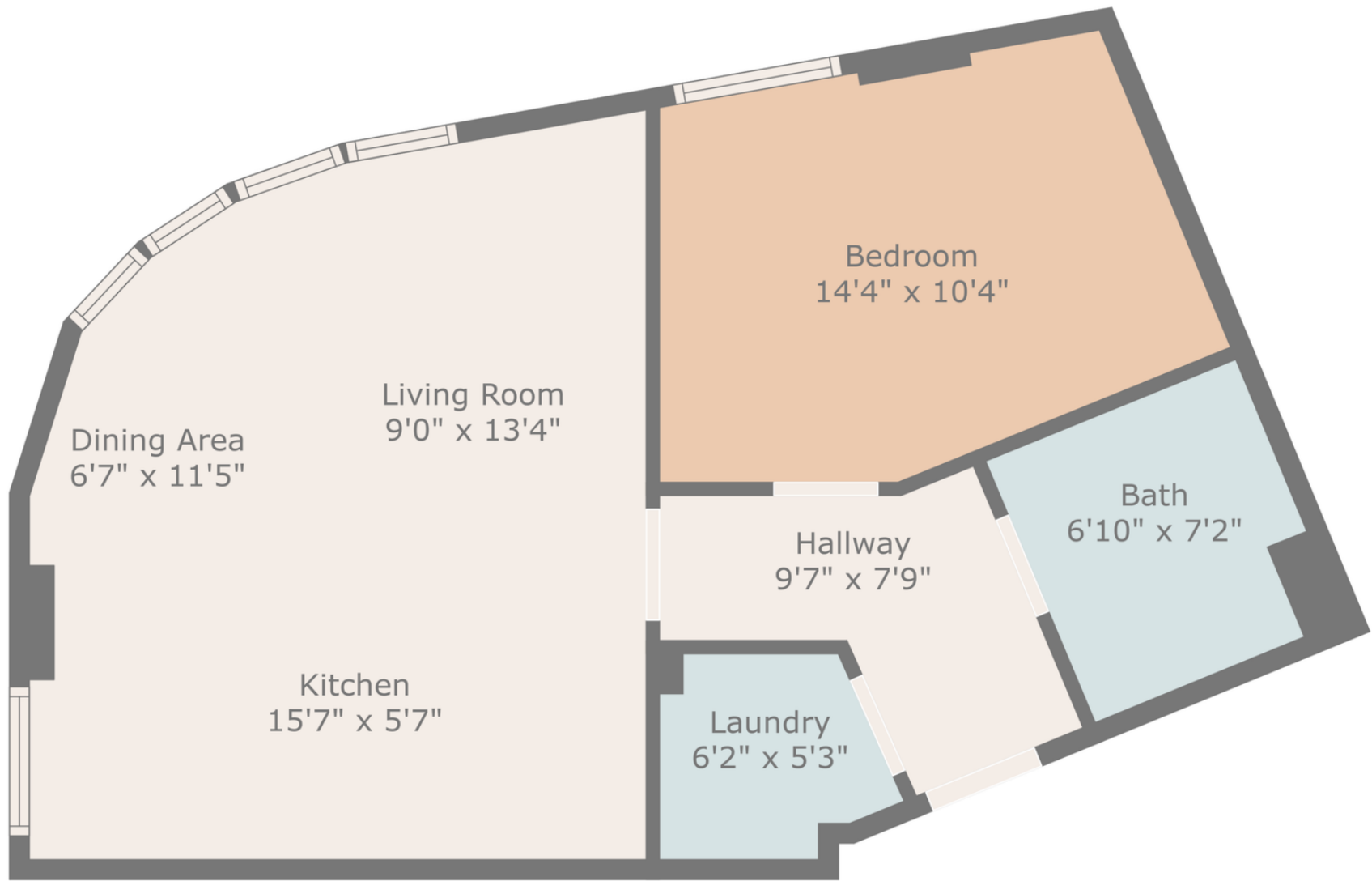






TOTAL: 830 sq. ft.  
FLOOR: 11'5" x 41'6"  
EXCLUDED AREAS: WALLS: 47 sq. ft.  
Disclaimer: Measurements shown highly variable but not guaranteed





**TOTAL: 530 sq. ft**  
FLOOR 1: 530 sq. ft  
EXCLUDED AREAS: WALLS: 47 sq. ft

Disclaimer: Measurements Deemed Highly Reliable But Not Guaranteed

