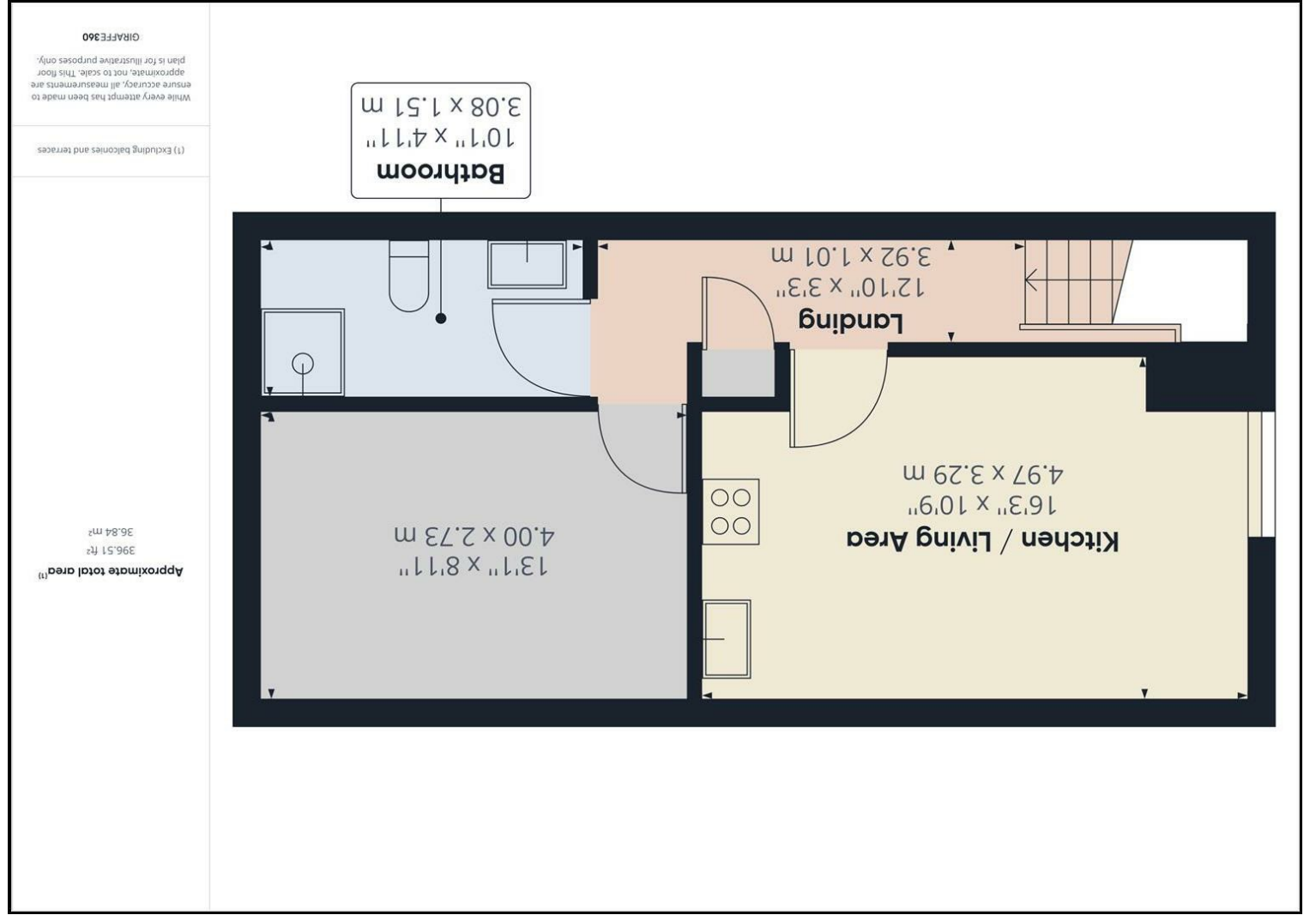


Consumer Protection from Unfair Trading Regulations 2008 We have not tested any apparatus, equipment, fittings or services and so cannot verify that they are in working order or fit for purpose. You are advised to obtain verification from your solicitor or surveyor. References to the tenure of a property are based on information supplied by the seller. We have not had sight of the title documents and a buyer is advised to obtain verification from their solicitor. Items shown in photographs are not included unless specifically mentioned within the sales particulars, but may be available by separate negotiation. We advise you to book an appointment to view before embarking on any journey to see a property, and check its availability.



- Landing**
12'10" x 3'3" (3.92 x 1.01)
- Kitchen/Living room**
16'3" x 10'9" (4.97 x 3.29)
- Shower Room**
10'1" x 4'11" (3.08 x 1.51)
- Bedroom**
13'1" x 8'11" (4.00 x 2.73)



PROPERTY TYPE Flat
BEDROOMS 1
RECEPTION ROOMS 1
BATHROOMS 1
EPC RATING C
COUNCIL TAX BAND A



A well-presented First floor flat is now available to the market. The property comprises a well lit shower room, an open-plan living/kitchen, and good sized bedroom.

Available from 26th May 2026. EPC rating: C. Council Tax Band: A.

Early viewings are highly recommended.



the location

what the owners will miss

just a thought...