



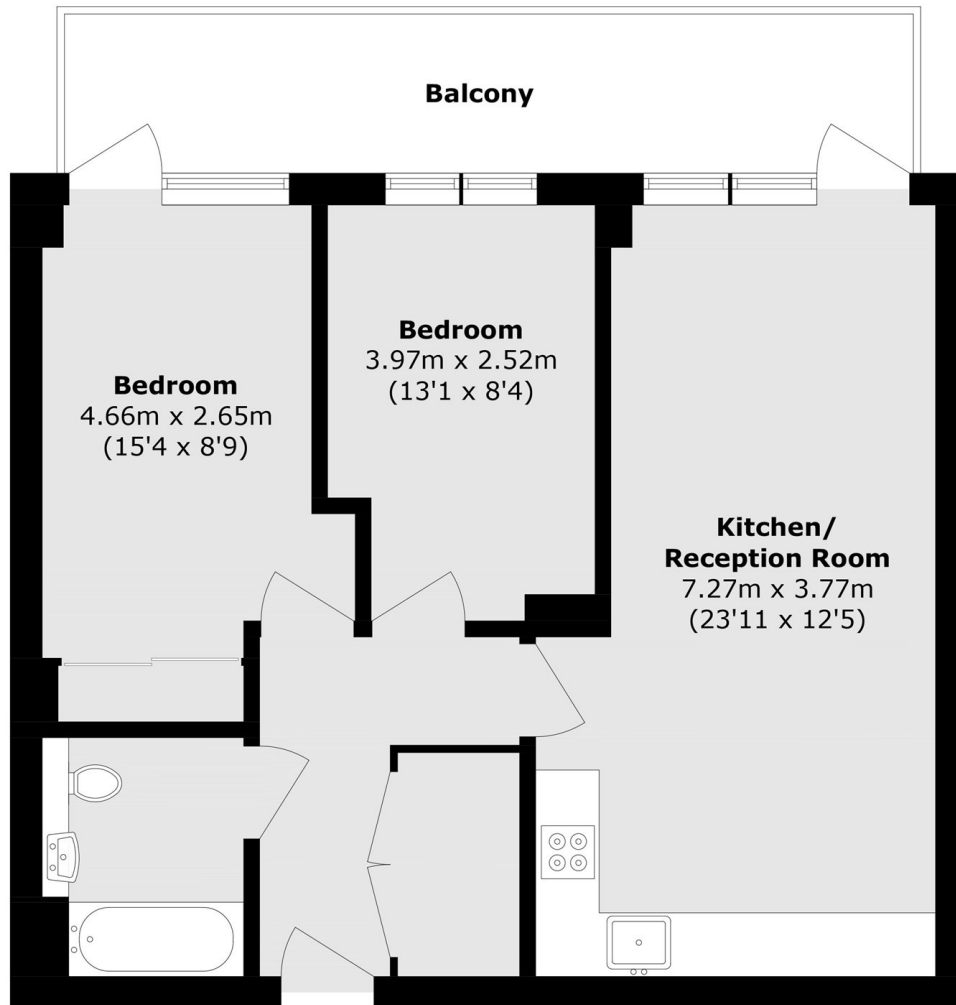
Hemming Street, E1

£3,000 Per week



- Two Double Bedrooms
- Furnished
- Balcony

- Communal Roof Terrace
- Lift Access
- Open Plan



Total area (approx.): 61.2 sq. m (658.9 sq. ft)

Balcony (approx.): 12 sq. m (129.2 sq. ft)

35A Wapping High Street,
London, E1W 1NR
020 7702 3456
ea2group.com