

NEVIN & WELLS

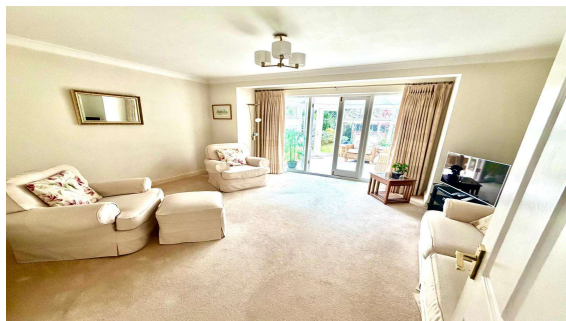
Residential

Established 2002



Clarence Street, Egham, Surrey, TW20 9RL

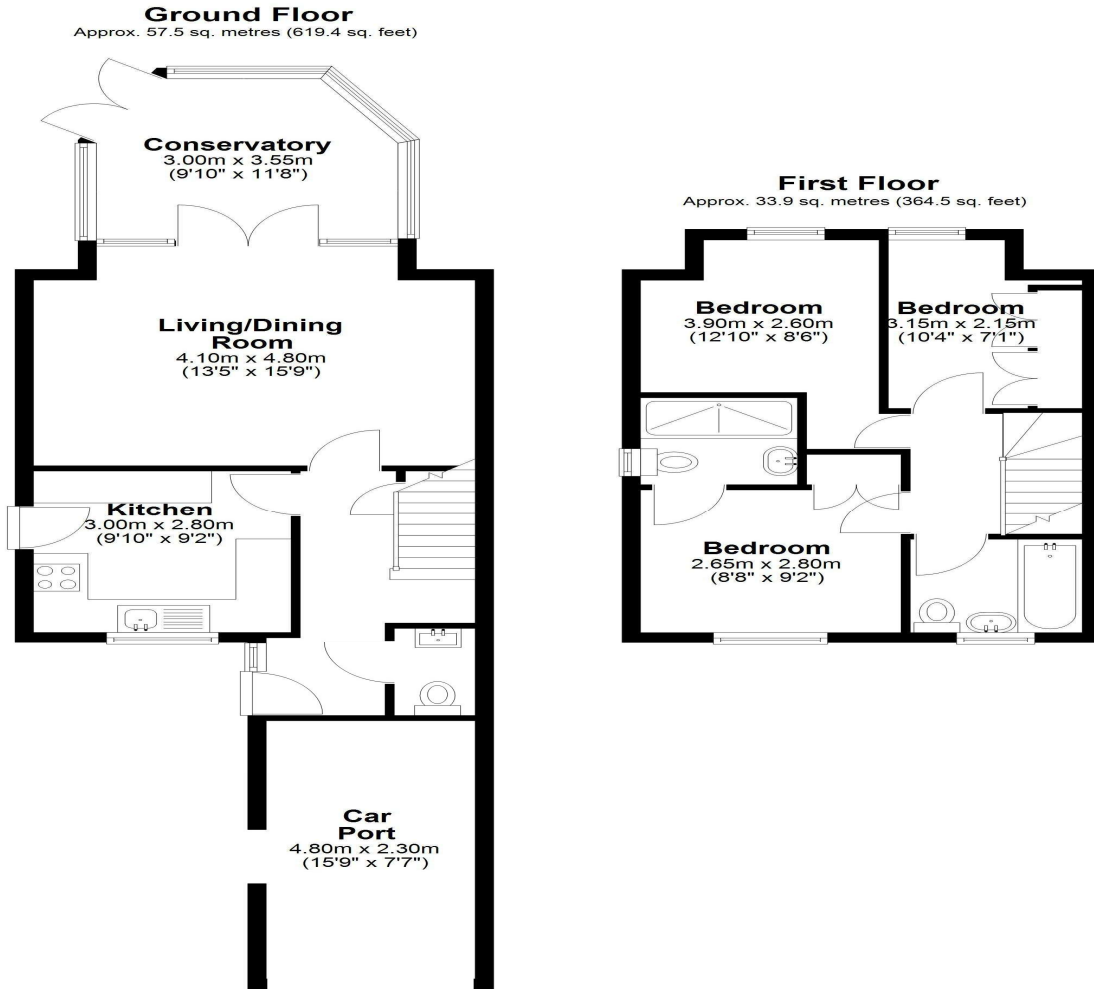
£565,000 F/H



A modern and beautifully presented three bedroom semi-detached home located in the heart of central Egham, just yards from High Street amenities, Magna Square and mainline station. This property offers the perfect blend of contemporary living, convenience and parking, a rare benefit in this location. No onward chain.

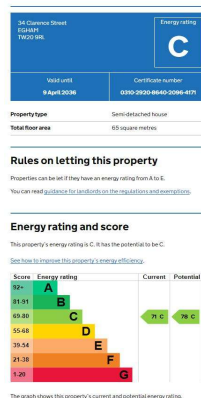
Clarence Street Egham, Surrey, TW20 9RL

FLOOR PLAN



Total area: approx. 91.4 sq. metres (983.9 sq. feet)

EPC



COUNCIL TAX BAND:

D - Runnymede Borough Council

VIEWINGS:

By appointment with the clients selling agents,
Nevin & Wells Residential on 01784 437 437 or visit
www.nevinandwells.co.uk



All measurements are approximate. Nevin & Wells Residential have not tested any systems or appliances.