



Guide Price
£700,000

Freehold

4x  1x  3x 

**Brompton Farm Road,
Strood, Rochester, Kent,
ME2**

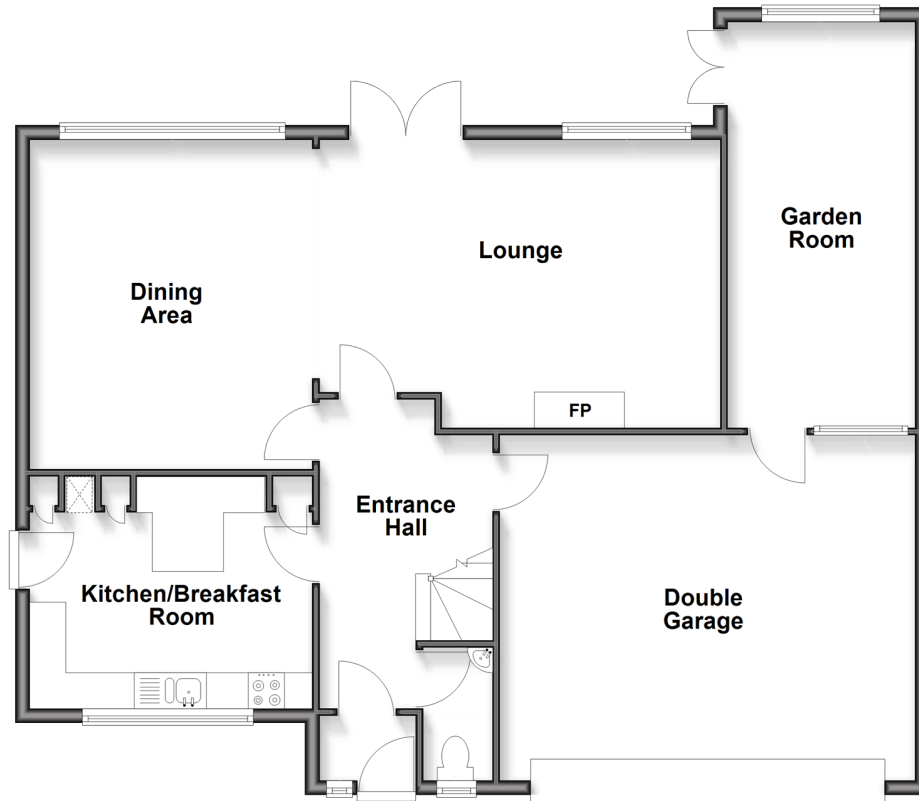
OVER 60?

Secure this property
for up to **59% less!**

Wards
Helping you move forwards

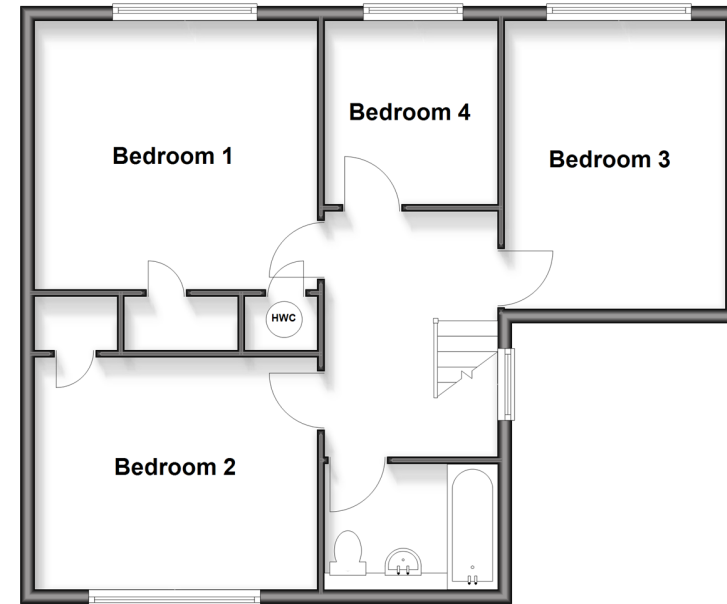
Ground Floor

Approx. 109.6 sq. metres (1180.1 sq. feet)



First Floor

Approx. 63.5 sq. metres (683.1 sq. feet)



Accommodation

GROUND FLOOR

Entrance Porch
Entrance Hall
Cloakroom
Lounge/Dining Area: 31'2 x 15'4 (9.51m x 4.68m)
Kitchen/Breakfast Room: 13'0 x 10'7 (3.97m x 3.23m)

FIRST FLOOR

Landing
Bedroom 1: 12'11 x 12'6 (3.94m x 3.81m)
Bedroom 2: 13'2 x 10'9 (4.02m x 3.28m)
Bedroom 3: 12'4 x 9'0 (3.76m x 2.75m)
Bedroom 4: 8'5 x 8'5 (2.57m x 2.57m)
Bathroom: 8'3 x 5'10 (2.52m x 1.78m)

OUTSIDE

Integral Double Garage: 18'4 x 16'8 (5.59m x 5.08m)
Garden Room: 18'5 x 8'4 (5.62m x 2.54m)
Front and Rear Gardens
Driveway



Main features

- Impressive detached home in the highly desirable location of Brompton Farm Road
- Integral double garage
- Versatile living accommodation with scope to extend, subject to the necessary planning
- Ample parking on the driveway
- Beautiful mature landscaped gardens with side access



Nearest Schools

Primary Schools: Gordon Junior School, Temple Mill Primary, All Faiths' Children's Community School
Secondary Schools: Strood Academy, Hoo Academy, The Rochester Grammar School for Girls, Sir Joseph Williamson Mathematical School for Boys



Transport Information

Train Stations: Strood 1.0 miles, Higham 1.6 miles, Rochester 1.8 miles



Address

Brompton Farm Road, Strood, Rochester, Kent, ME2



Directions

For directions to this property please contact us.



Wards
Helping you move forwards

Call Strood Branch 01634 716597 ■ wardsofkent.co.uk



■ If buying to rent, please check if Local Authority licensing schemes apply before proceeding

■ Through a Homewise Home For Life Plan people aged 60+ can secure this property for up to 59% less, by purchasing a Lifetime Lease



11837139/20260530/DV/CM