



## ST NORBERT GREEN, SE4

£800,000

Semi-detached family home  
Three bedrooms  
Extended, open plan living space  
Tasteful decor throughout  
Close to excellent transport links  
Main bedroom with en-suite

@marshandparsons  
marshandparsons.co.uk

MARSH &  
PARSONS

# ABOUT THE PROPERTY

Situated on the highly sought-after St Norbert Green, this beautifully extended three-bedroom family home is presented in excellent condition throughout and offers stylish, contemporary living space perfectly suited to modern family life.

The heart of the home is the impressive, open-plan kitchen and dining area, thoughtfully designed to create a sociable and functional space. Featuring a breakfast bar, ample storage and stylish sliding doors providing direct access to the garden, it is ideal for both everyday living and entertaining. The ground floor further benefits from attractive herringbone flooring and tasteful décor throughout, creating a warm and welcoming atmosphere.







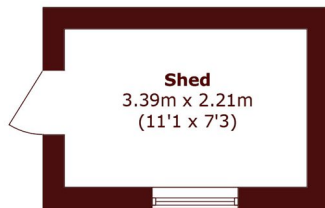
# FURTHER DETAILS

Upstairs, the property offers three well-proportioned bedrooms and a modern family bathroom, all finished to a high standard. To the rear, the private garden provides an excellent outdoor retreat and is complemented by a versatile external office with electricity connected, making it ideal for home working, or an additional hobby space.

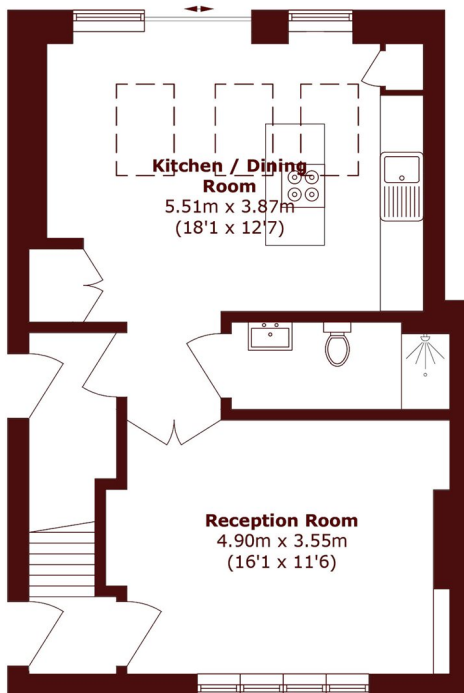
Located within easy reach of Brockley, Crofton Park and Honor Oak, the property benefits from excellent transport links with access to London Bridge in less than 15 minutes, highly regarded local schools including John Stainer Primary, and an array of popular independent cafés, shops and green spaces.



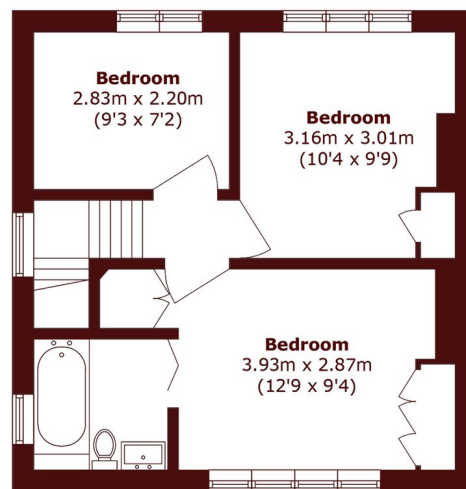
# STEP INSIDE ST NORBERT GREEN



**Ground Floor**



**Ground Floor**



**First Floor**

Total area (approx.): 87.3 sq. m (939.7 sq. ft)  
Outbuilding area (approx.): 7.5 sq. m (80.7 sq. ft)

**Brockley**  
020 8629 8164

Energy Rating: We aim to make our particulars both accurate and reliable. However, they are not guaranteed; nor do they form part of an offer or contract. If you require clarification on any points then please contact us, especially if you're traveling some distance to view. Please note that appliances and heating systems have not been tested and therefore no warranties can be given as to their good working order

**MARSH &  
PARSONS**