



## Potts Close, Norton, Stockton-On-Tees, TS20 1FJ

Tucked away in a cul de sac on this ever popular Norton Gardens estate off Junction Road, this attractive three bedroom detached home offers a rare chance to secure one of only four properties of its style in the entire development.

The house has been thoughtfully arranged to suit modern family life, beginning with an entrance hall that leads to a comfortable lounge. To the rear, the open plan kitchen/dining space features integrated fridge freezer, oven, hob and dishwasher, with French doors opening directly onto the garden. A separate utility room with side access and a ground floor WC add practicality.

Upstairs, the generous master bedroom enjoys its own en-suite shower room, while two further bedrooms are served by a stylish family bathroom.

The West facing rear garden provides a lovely setting, with a mix of lawn and patio. A detached garage and off-street are available to the front and the home benefits from UPVC double glazing and gas central heating throughout.

Set within a well regarded residential area, the property is perfectly placed for local amenities, reputable schools and excellent transport connections. Norton Village Green and the vibrant High Street, with its cafés, bars and independent shops, are only a short stroll away.

£265,000



# Potts Close, Norton, Stockton-On-Tees, TS20 1FJ

## HALLWAY

## LOUNGE

12'9" x 12'3" (3.89m x 3.73m)

## KITCHEN/DINING ROOM

17'11" x 9'3" (5.46m x 2.82m)

## UTILITY

5'7" x 5'4" (1.70m x 1.63m)

## DOWNSTAIRS WC

5'4" x 3' (1.63m x 0.91m)

## LANDING

## BEDROOM ONE

12'9" x 10'8" (3.89m x 3.25m)

## EN SUITE

5'10" x 5'10" (1.78m x 1.78m)

## BEDROOM TWO

9'6" x 9'3" (2.90m x 2.82m)

## BEDROOM THREE

9'6" x 6'6" (2.90m x 1.98m)

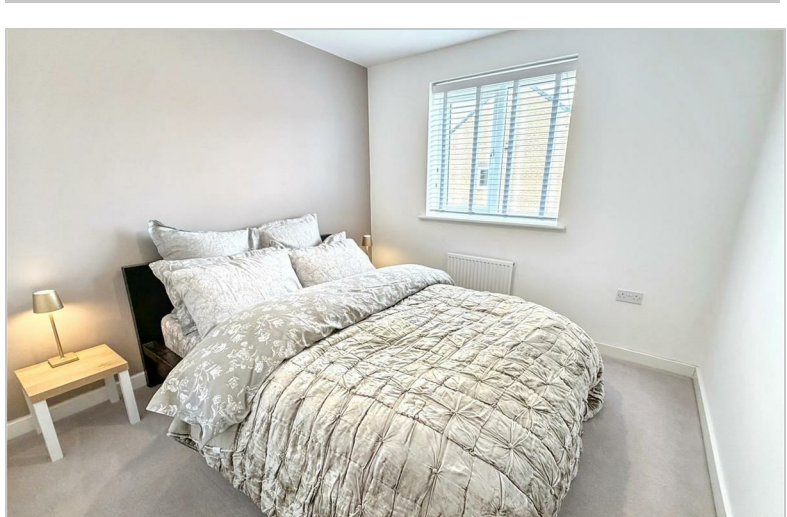
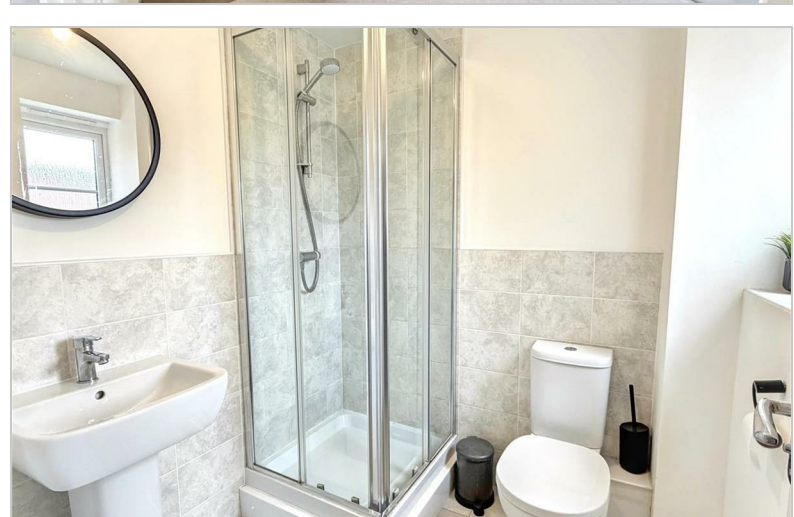
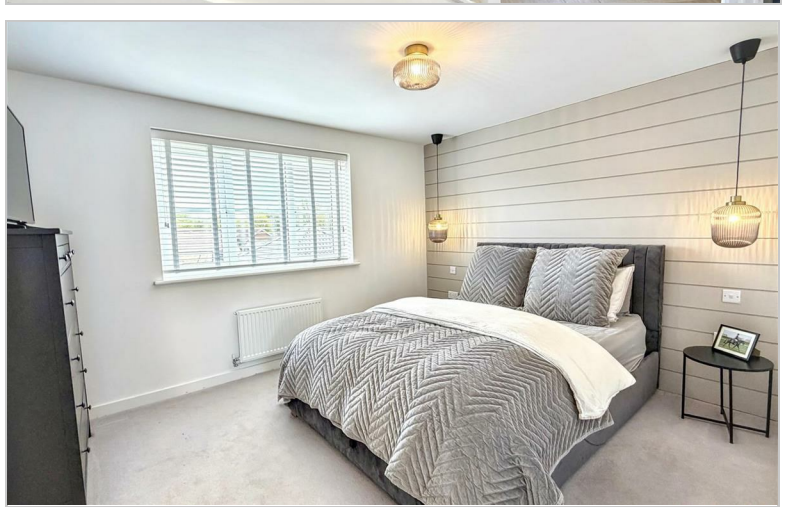
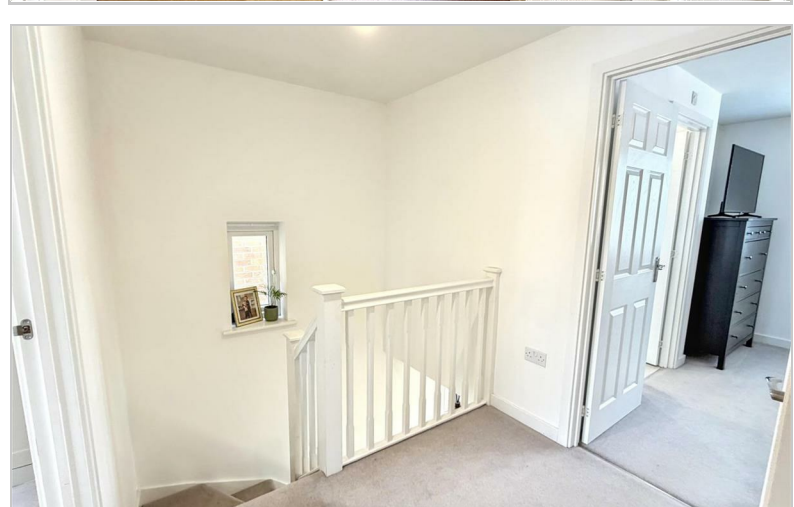
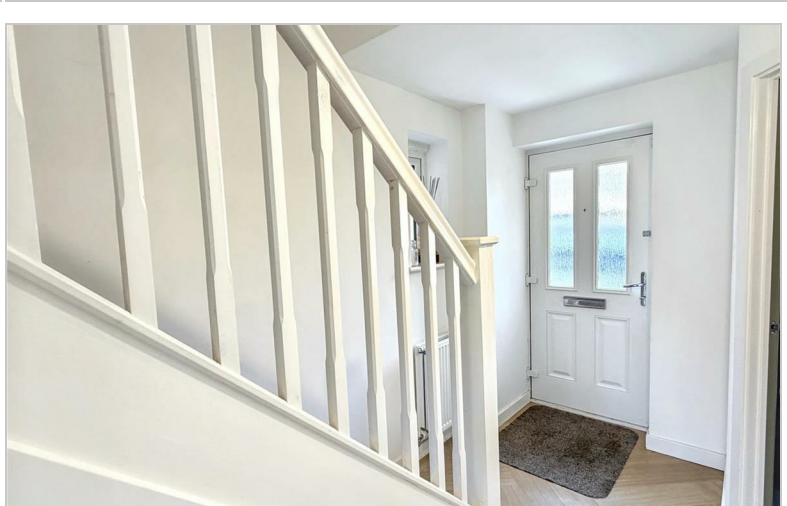
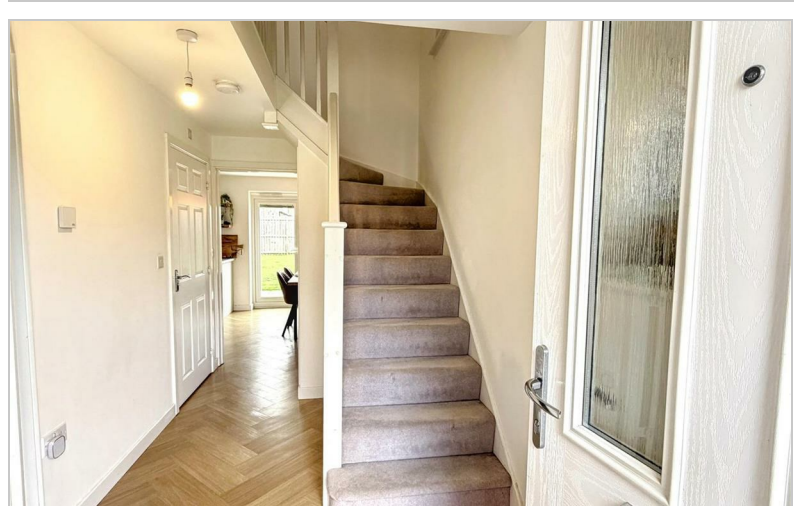
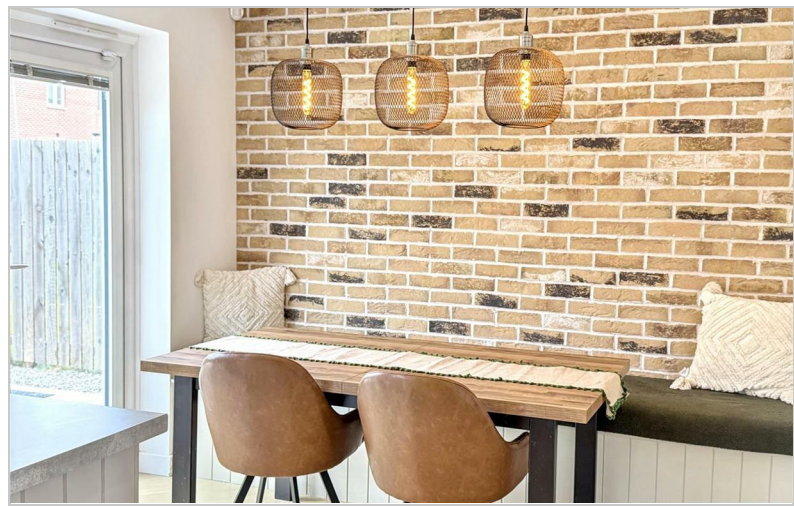
## BATHROOM

6'9" x 5'6" (2.06m x 1.68m)

## AML PROCEDURE

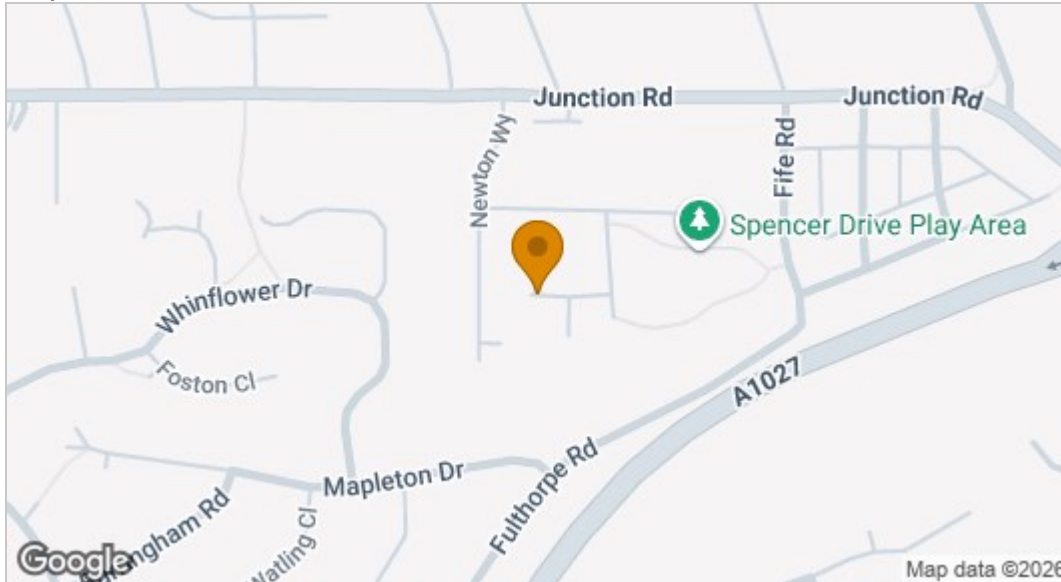
To comply with anti-money laundering regulations (AML) all estate agents must be registered with HMRC. Gowland White complies with this legislation by using an online AML risk assessment company, approved by the UK Government. Please note that all buyers are charged a fee of £36.00 (inc. VAT), for each buyer, to cover this process. These fees are payable before we can progress an agreed sale.



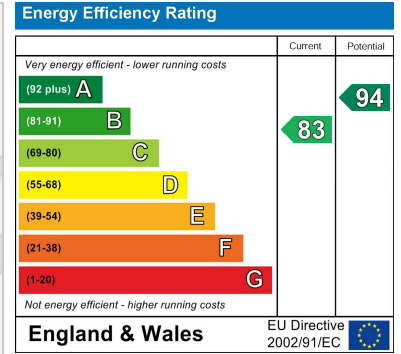




## Map

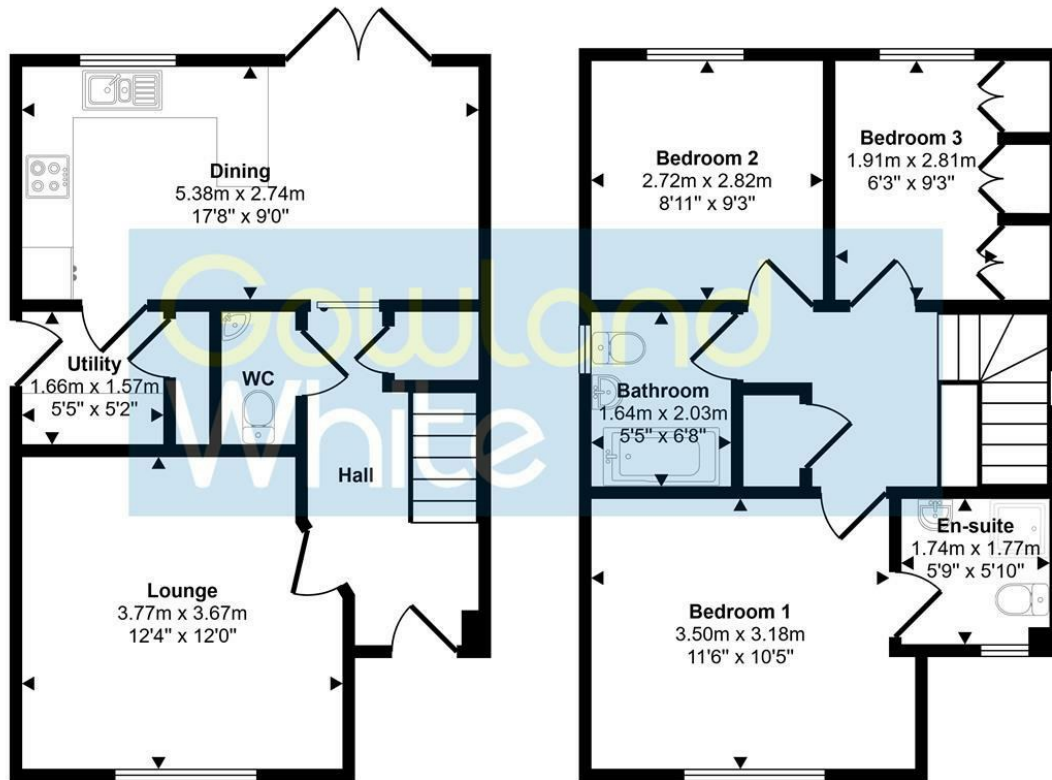


## EPC graph



## Floor Plan

Approx Gross Internal Area  
85 sq m / 915 sq ft



Ground Floor  
Approx 42 sq m / 454 sq ft

First Floor  
Approx 43 sq m / 461 sq ft

This floorplan is only for illustrative purposes and is not to scale. Measurements of rooms, doors, windows, and any items are approximate and no responsibility is taken for any error, omission or mis-statement. Icons of items such as bathroom suites are representations only and may not look like the real items. Made with Made Snappy 360.

## VIEWING

Please contact us on 01642 615657 if you wish to arrange a viewing or would like more information.

These particulars, whilst believed to be accurate are set out as a general outline only for guidance and do not constitute any part of an offer or contract. Intending purchasers should not rely on them as statements of representation of fact, but must satisfy themselves by inspection or otherwise as to their accuracy. No person in this firm's employment has the authority to make or give any representation or warranty in respect of the property.

17 Bishop Street, Stockton on Tees, TS18 1SY

Tel: 01642 615657 Email: [stockton@gowlandwhite.co.uk](mailto:stockton@gowlandwhite.co.uk) <https://www.gowlandwhite.co.uk/>