

Symonds
& Sampson



Magnolia Cottage

2 Wyke Oliver Road, Preston, Weymouth, Dorset

Magnolia Cottage

2 Wyke Oliver Road

Preston

Weymouth

Dorset DT3 6BW

A beautifully presented semi-detached period cottage conveniently situated at Preston and within easy access to Overcombe beach.



- Charming and spacious period stone built semi detached cottage
 - Immaculately presented, extended accommodation
- Close to a range of local amenities, Overcombe beach and Bowleaze Cove
 - Impressive open plan sitting/dining room
- Three double bedrooms, en suite bathroom and first floor shower room
 - Attractive kitchen/dining room
 - Study/Bedroom 4
- Extensive off road parking with 2 driveways
 - Delightful south facing garden

Guide Price **£450,000**

Freehold

Poundbury Sales
01305 251154

poundbury@symondsandsampson.co.uk



THE PROPERTY

A charming and beautifully presented period semi detached cottage conveniently situated at Preston, close to a range of local amenities and a short walking distance to Overcombe beach.

Dating from the 1890s with attractive stone elevations, the cottage has been substantially extended, creating a spacious and versatile home with abundant natural light from east and south facing elevations.

On the ground floor, an entrance porch leads into a delightful open plan sitting/dining room enjoying a double aspect, south facing bay window and French doors opening to the garden and sun terrace. There is an attractive stone fireplace with wood-burning stove and door with stairs to the first floor. An inner lobby leads to a bedroom/study room with side aspect windows and access into a well-appointed kitchen/breakfast room with wall and floor cupboards, wall-mounted Worcester Bosch gas boiler, induction hob, electric oven, integrated fridge/freezer, microwave and dishwasher. A side door leads to a utility room and ground floor bathroom with a modern white suite including a 'P' shaped bath with shower over and fully tiled walls and flooring with door into a recently converted ensuite double bedroom ideal for guests or dependant relative.

On the first floor landing access leads to an insulated loft space and a contemporary fitted shower room, again fully tiled throughout. There are 2 further double bedrooms, one having a range of built-in wardrobes.

OUTSIDE

A brick paved driveway off Preston Road provides off road parking. The gardens are situated to the south side of the cottage with a further driveway off Wyke Oliver Road leading to concrete hardstanding off road parking for several cars. Immediately adjoining the rear is a paved Indian Sandstone sun terrace with wrought iron railings enjoying a south facing aspect. Steps lead to attractive lawned gardens stocked with shrubs, plants and a fine Magnolia tree.

SITUATION

The property is situated on the outskirts of Weymouth in one of the area's most popular locations. It's just a short walk to the dog-friendly beaches at Bowleaze Cove, Preston and Overcombe where there are regular swimmers and a great spot for paddle boarding and kite surfing. There are stunning, countryside walks towards the SW coast path within a short distance from the cottage at Furzy cliff on Bowleaze Cove and to a choice of cafés overlooking the sea.

The wide range of local amenities is close by including a post office / general store, deli/off-licence, public houses and restaurants. The Preston Road doctor's surgery and chemist are a few meters away at Chalbury corner. The bustling and lively town centre is approximately 2 miles away with a comprehensive range of shopping and educational facilities.

DIRECTIONS

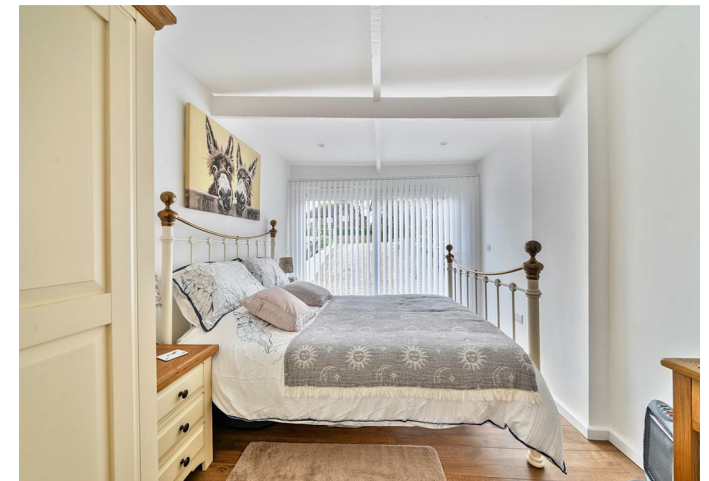
what3words///looked.wriggled.strength

SERVICES

Mains gas, electric, water and drainage.
Gas fired central heating system.

Broadband- Ultrafast broadband is available
Mobile phone coverage- There is mobile coverage in the area, please refer to Ofcom's website for more details. (<https://www.ofcom.org.uk>).

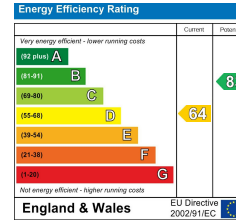
Local Authority
Dorset Council Tel: - 01305 251000
Council Tax Band D



Wyke Oliver Road, Weymouth

Approximate Area = 1292 sq ft / 120 sq m

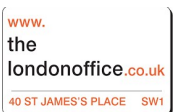
For identification only - Not to scale



Floor plan produced in accordance with RICS Property Measurement 2nd Edition, Incorporating International Property Measurement Standards (IPMS2 Residential). © nrichecom 2026. Produced for Symonds & Sampson. REF: 1422515



Poundbury/DW/12.3.26



01305 251154

poundbury@symondsandsampson.co.uk
Symonds & Sampson LLP
Arch Point House, 7 Queen Mother Square,
Poundbury, Dorset DT1 3BY



Important Notice: Symonds & Sampson LLP and their Clients give notice that: 1. They have no authority to make or give any representations or warranties in relation to the property. These particulars do not form part of any offer or contract and must not be relied upon as statements or representations of fact. 2. Any areas, measurements or distances are approximate. The text, photographs and plans are for guidance only and are not necessarily comprehensive. It should not be assumed that the properties have all necessary planning, building regulation or other consents and Symonds and Sampson LLP have not tested any services, equipment of facilities. 3. We have not made any investigation into the existence or otherwise of any issues concerning pollution of the land, air or water contamination and the purchaser is responsible for making his/her own enquiries in this regard. 4. The property is sold subject to and with the benefit of all existing wayleaves, easements and rights of way whether public or private, specifically mentioned or not. The vendors shall not be required to define any such rights, privileges or advantages.

SALES | LETTINGS | AUCTIONS | FARMS & LAND | COMMERCIAL | NEW HOMES | PLANNING & DEVELOPMENT