



6, Constables Way, Hertford

SG13 7AS

Asking Price £325,000



[stevenoates.com](http://stevenoates.com)



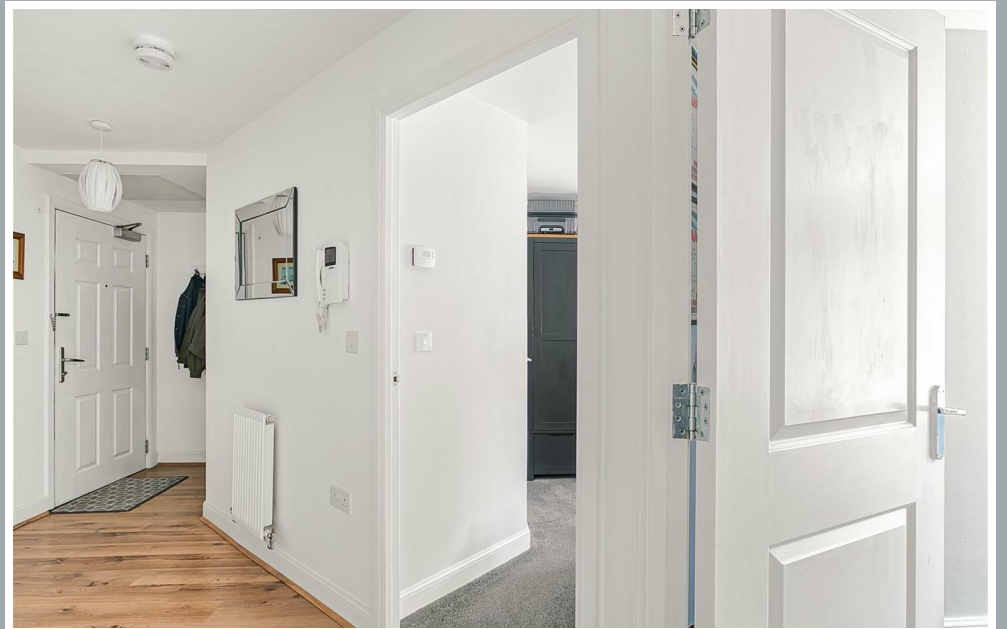
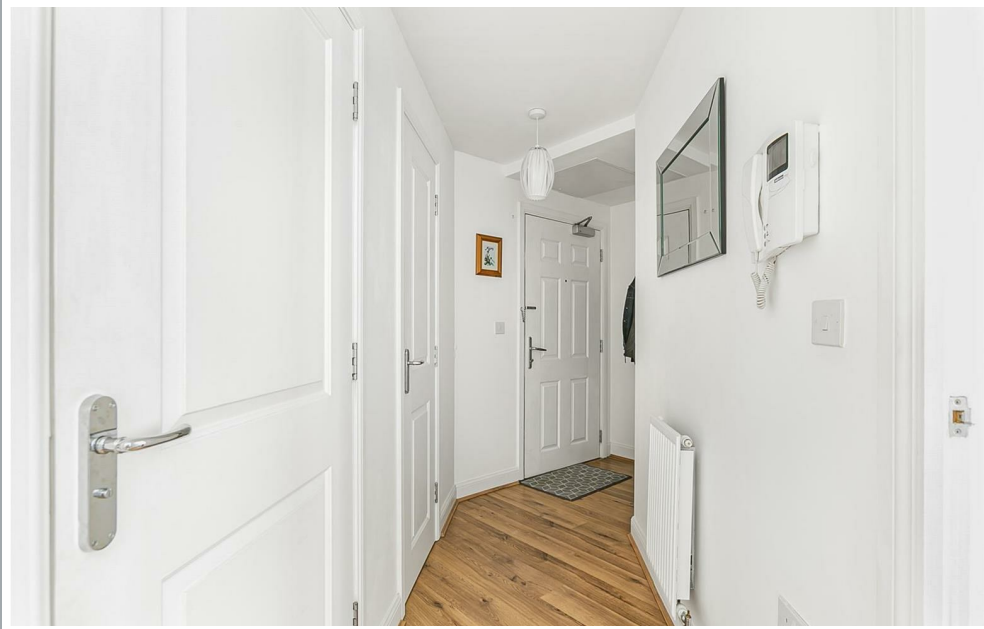
## 6 Constables Way, Hertford, SG13 7AS

Steven Oates are delighted to offer this truly magnificent two-bedroom apartment which forms part of this extremely popular development which is situated on the edges of Hertford Town Centre offering easy access to Hertford East train station and all of the Towns Amenities. Positioned on the upper ground floor, this luxury apartment is situated in arguably one of the best positions in the block offering with a balcony privately secluded by some well established hedges and bushes. Boasting spacious and luxury accommodation throughout, this property welcomes you with a great size entrance hallway which includes two useful storage cupboards. Just off the hallway, you will also find two great size double bedrooms which both comfortably fit double beds, the impressive main bedroom benefits from it's own en-suite shower room, there is also a second separate bathroom suite. The spacious living accommodation forms part of the incredible open plan kitchen/living area perfect for modern day living. The kitchen benefits from integrated appliances and there are French doors from the lounge leading straight out to the balcony which is privately separated by some beautiful hedging which gives you a peaceful outside space to use in the warmer months.

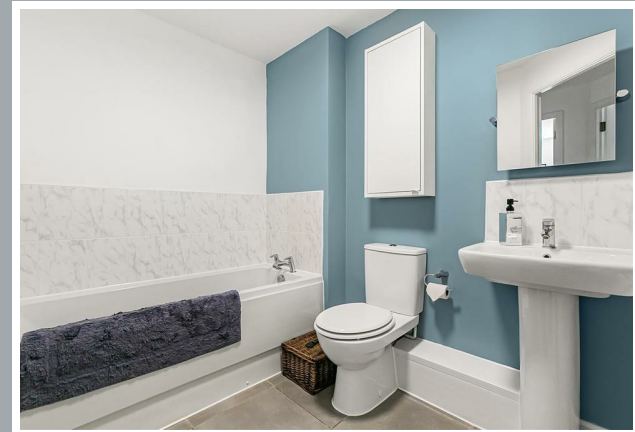
Situated in this modern complex just off the Ware Road, Constables Way offers easy access Hertford Town Centre and A10. Hertford East Train Station is only (0.9m) away which provides a regular fast service to both London's Tottenham Hale & Liverpool Street Train Stations. Hertford Town Centre has a wide range of restaurants, coffee shops and bars. Hartham Common and the River Lea is close by which has a range of facilities available including the local leisure centre, Hartham grounds and woods, tennis courts, and more. Also close by is a superstore and a useful industrial park.



70 Fore Street, Hertford, Hertfordshire, SG14 1BY

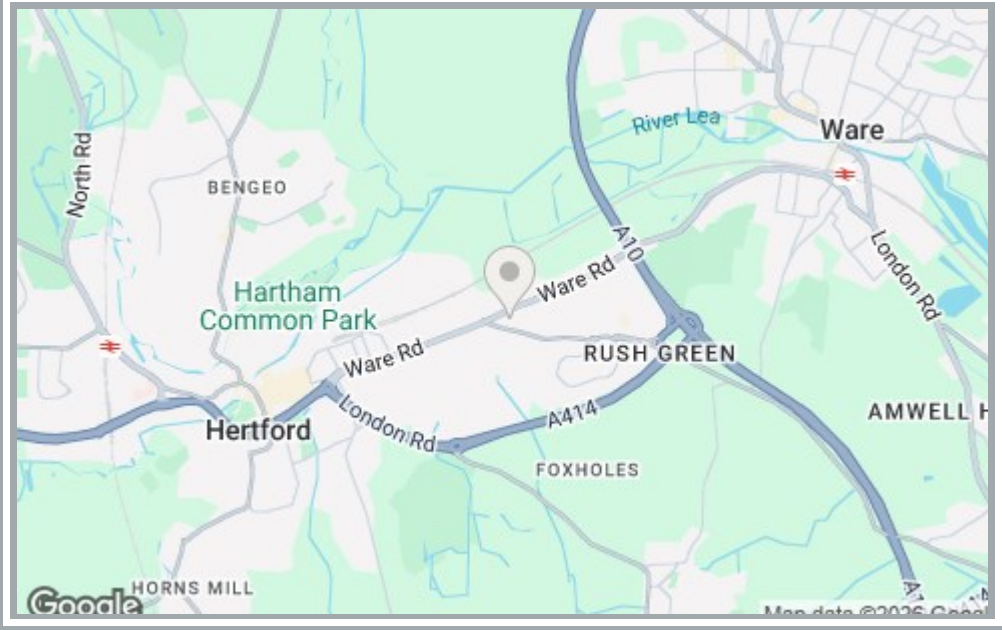
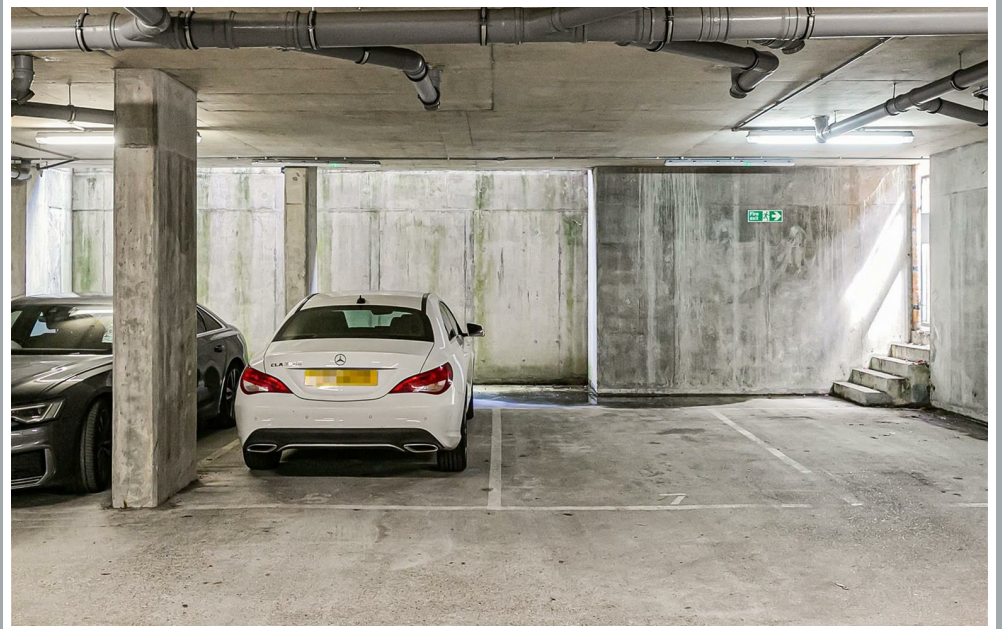
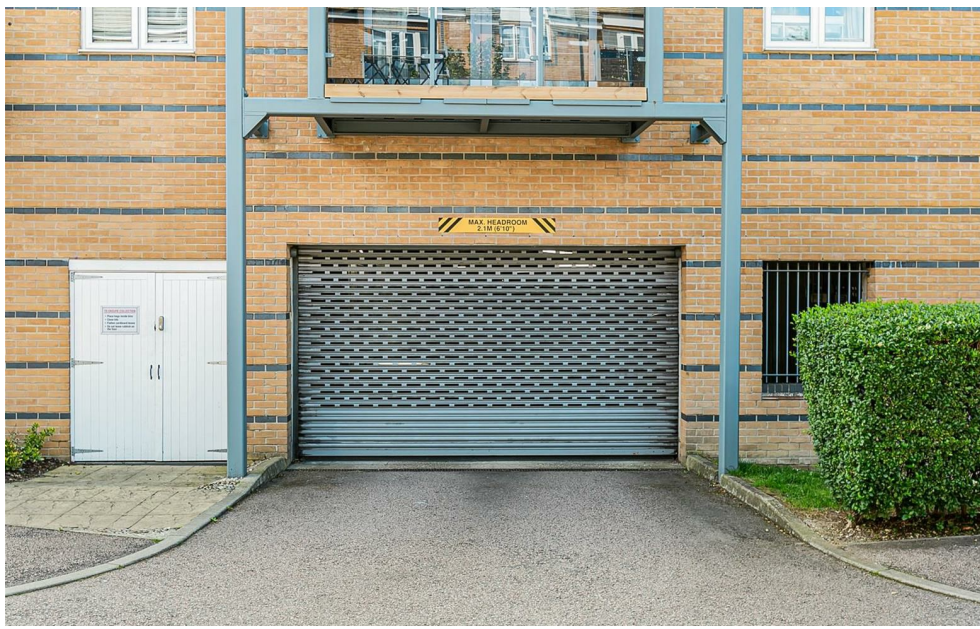


70 Fore Street, Hertford, Hertfordshire, SG14 1BY



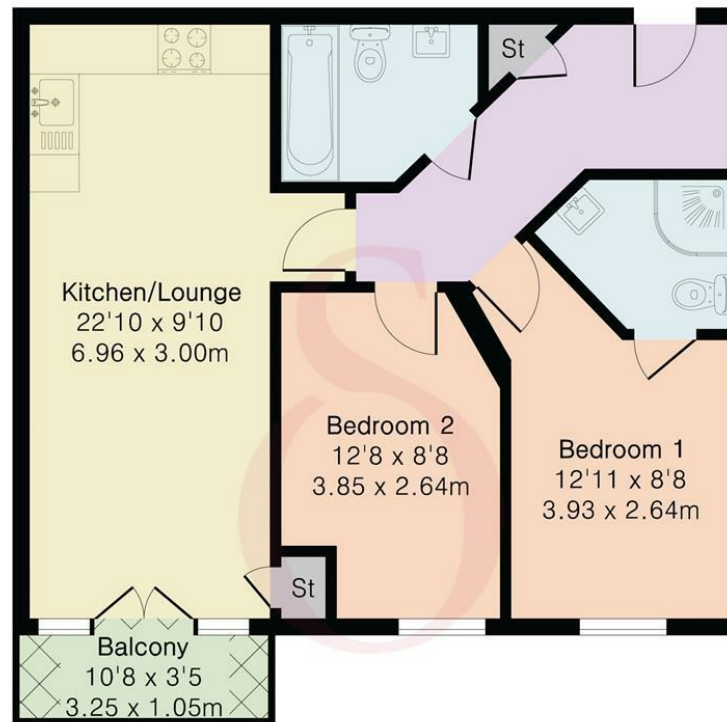
70 Fore Street, Hertford, Hertfordshire, SG14 1BY





70 Fore Street, Hertford, Hertfordshire, SG14 1BY

Approximate Gross Internal Area 650 sq ft - 60 sq m



Upper Ground Floor



Floor plan produced in accordance with RICS Property Measurement 2nd Edition. Although Pink Plan Ltd ensures the highest level of accuracy, measurements of doors, windows and rooms are approximate and no responsibility is taken for error, omission or misstatement. These plans are for representation purposes only and no guarantee is given on the total square footage of the property within this plan. The figure icon is for initial guidance only and should not be relied on as a basis of valuation.



These particulars, whilst believed to be accurate are set out as a general outline only for guidance and do not constitute any part of an offer or contract. Intending purchasers should not rely on them as statements of representation of fact, but must satisfy themselves by inspection or otherwise as to their accuracy. No person in this firm's employment has the authority to make or give any representation or warranty in respect of the property.

